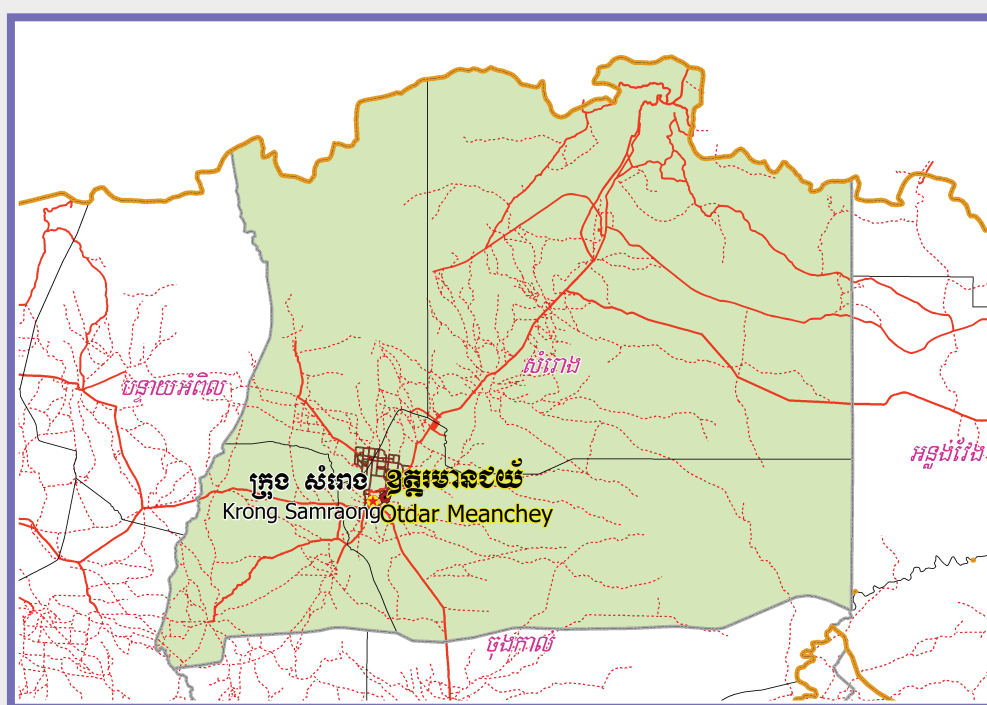


KINGDOM OF CAMBODIA
Nation Religion King



**National Committee for Sub-National
Democratic Development (NCDD)**



SAMRAONG KRONG DATA BOOK 2009

Krong Code Nr: 2204
Otdar Meanchey Province

October 2009

Samraong Krong Data Book 2009

District Code Nr: 2204

Otdar Meanchey Province

Table of Contents

List of Abbreviations	i
Glossary.....	ii
Preface	vi
Introduction	vii
SECTION A: GEOGRAPHY	1
1 Administration and Infrastructure.....	3
2 Land Use and Natural Resources.....	5
3 Geography	7
3.1 Land Area	7
3.2 Distances between Offices	7
SECTION B: DISTRICT PROFILE	9
1 General Information	11
1.1 Population of the District.....	11
1.2 Occupations	12
1.3 Property	14
2 Infrastructure and Economy.....	16
2.1 Roads in meters over 3 years.....	16
2.2 Sewerage Pipes in meters over 3 years.....	16
2.3 Drainage and Bridges	16
2.4 Services in the District	16
2.5 Agriculture.....	17
3 Social Aspects	28
3.1 Education	28
3.2 Health.....	34
3.3 Water and Sanitation	36
3.4 Vulnerable groups.....	40
3.5 Migration	42
4 Natural Resources and Environment (NRE).....	44
4.1 Families involved with NRE issues over 3 years	44
4.2 Percentage of Families involved with Natural Resource issues, by Commune, for 2008	44
4.3 Percentage Houses with access to Garbage collection and Families affected by environmental Pollution, by Commune, for 2008	44
4.4 Percentage Families using chemical Fertilizer and chemical Pesticides, by Commune, for 2008 ..	44
5 Administration and Security	45

5.1	Birth Registration across 3 years.....	45
5.2	Number of unregistered Infants born in 2008, by Commune	45
5.3	Registered criminal Cases over 3 years	45
5.4	Registered criminal Cases per 10,000 people, by Commune, for 2008.....	45
5.5	Number of registered Land Disputes, by Commune, in 2008	45
6	Gender	46
6.1	Registered Domestic Violence over 3 years.....	46
6.2	Percentage of registered cases of Families experiencing domestic Violence, by Commune, in 2008	46
6.3	Women's involvement over 3 years.....	46
6.4	Percentage of Female Participants in Civil Society and of 18-60 year women with uncertain Jobs, by Commune, in 2008	47
6.5	Female-headed Households over 3 years.....	47
6.6	Percentage female-headed Households and with Children of less than 5 years old, by Commune, in 2008	47
7	Indigenous People in the District	48
7.1	Ethnic Minorities in the District over 3 years.....	48
7.2	Other Minorities in the District over 3 years.....	48
	SECTION C: PLANS AND PROJECTS	49
8	Priorities and Plans	51
8.1	Priorities of Commune Councils for 2009 in the District by Sector	51
8.2	Temporary Agreements by Commune, for 2009	54
8.3	Outputs, estimated and actual costs of C/S Fund Projects between 2005 and 2008, by Commune	65
8.4	Total Expenditure on C/S Fund Projects by sector and commune between 2005 and 2008.....	66
8.5	Actual 2009 C/S Fund projects by Commune	67
9	District level Projects from 2006 to 2009	68
9.1	District Initiative Infrastructure Projects from 2006 to 2009	68
9.2	District Initiative Service Projects from 2006 to 2009	69
9.3	Inter Commune Council Projects in 2008 and 2009	70
9.4	Other Projects in 2008 and 2009	70
	SECTION D: SERVICES AND ORGANIZATIONS	73
10	Infrastructure.....	75
10.1	Length of and Expenditure on Roads in 2008, by District	75
10.2	Scale of and Expenditure on Irrigation in 2008, by District.....	75
10.3	Power Supply in 2008, by District	76
11	Health Facilities.....	77

11.1 Health Facilities in the Province, by Operational District.....	77
11.2 Health Facilities and Staff in the province, by Operational District.....	78
11.3 Deliveries in 2007 in the Province, by Operational District.....	78
12 Education	79
12.1 Schools, Classes, Students, Staff, for for all levels, for 2007/2008 by District.....	79
12.2 Characteristics of Schools and School Principals for 2007/2008 by Commune	79
12.3 Enrolment by Level of Education, 2006/2007 by Commune	80
12.4 Enrolment by Level of Education, 2007/2008 by Commune	80
12.5 Aspects of Enrolment for 2007/2008 by Commune.....	80
12.6 School Buildings for all schools in the District for 2007/2008, by Commune	81
12.7 Conditions of Classrooms and Existence of Separate School Office and Library, by Commune	81
12.8 Community Participation and Financing across all schools in the District for 2007/2008 by Commune	81
12.9 Percentage Student Flow Rates and Graduation by level 2006/2007, by Commune	82
13 Staff and Resources at the District	83
13.1 District Councilors elected in 2009	83
13.2 Committees of the Council.....	83
13.3 Board of Governors.....	84
13.4 Offices under Sala Krong, Sala Srok and Sala Khan	84
13.5 Municipality/District/Khan line offices.....	84
13.6 Properties and Equipment of District Administration	85
13.7 Registered Revenue of the District Administration in 2008	86
13.8 Services in the District	86
13.9 Civil Society Organizations active in the District.....	86
13.10 Private Sector Organizations.....	88
SECTION E: POVERTY DATA	89
14 Data on Poverty	91
14.1 Predicted Poverty Rates for 2009, by commune	91
14.2 Poverty data from survey.....	91

List of Abbreviations

#	Number
AGR	Agriculture
BR	Birth Registration
C. Pilot	Piloted Commune
C/S	Commune / Sangkat
CBO	Community-Based Organization
CDB	Commune Database
CDPD	Commune Development and Planning Database
CIP	Commune Investment plan
CLTS	Community Led-Total Sanitation
Comm.	Commune
Com Cov	Commune Covered
CPA	Complementary Package of Activities
CPS	Community Preschool
CCWC	Commune Committees for Women and Children
DANIDA	Danish International Development Agency
DDLG	Democratic Development and Local Governance Project (EC-UNDP)
DFID	Department For International Development (UK)
DIP	District Initiative Project
DIS	District Information System
District PDRD	District Office of Rural Development
District WP	District Work Plan
DIW	District Integration Workshop
DoLA	Department of Local Administration
Dr	Doctor
DWRM	District Office of Water Resource and Meterology
ECD	Early Childhood education (part of PE)
EMIS	Education Management Information System
Event IC	Celebration of International Days
FDH	Former District Hospital
GTZ	German Society for Technical Cooperation (Gesellschaft für Technische Zusammenarbeit GmbH)
Ha	Hectare
HC	Health Center
HC (NB)	Health Center (no building)
HH	Headed Household
HSI	Intervention for Health
HP	Health Post
HW	Hand Washing
ICC	Inter Commune Council
IFAD	International Fund for Agricultural Development
IND	Industry
Inter-commune	Inter-Commune Project Management Committee or Inter-commune project
IO	International Organization
LASED	Land Allocation for Socio-Economic Development
LGCR	Local Governance for Children's Rights
M&E	Monitoring and Evaluation
MA	Medical Assistant
MoEYS	Ministry of Education, Youth and Sports
MoH	Ministry of Health

MoP	Ministry of Planning
MPA	Minimum Package of Activities
MW1	Primary Midwives
MW2	Secondary Midwives
n/a	Not available
NCD	National Contracts Database
NCDD	National Committee for Sub-National Democratic Development
NGO	Non-Governmental Organization
NRML	Natural Resources Management and Livelihood
NU1	Primary Nurse
NU2	Secondary Nurse
OD	Operational District
ODF	Open Defecation Free
Ope. Costs	Operational Costs
Others	Other Staff
PBW	Public Works
PDoEYS	Provincial Department of Education, Youth and Sport
PDRD	Provincial Department of Rural Development
PDWRM	Provincial Department of Water Resource and Meteorology
PE	Parenting Education
PHAST	Participatory Hygiene and Sanitation Transformation
PHD	Provincial Health Department
PID	Project Information Database
PMC	Project Management Committee
Pop 04-05	Population Covered 2004 or 2005
PSDD	Project to Support Democratic Development through Decentralization and Deconcentration
RRD	Rural Road Development
RH	Referral Hospital
RILGP	Rural Investment and Local Governance Project
RPRP	Rural Poverty Reduction Program
RuLIP	Rural Livelihoods Improvement Program
SIDA	Swedish International Development Cooperation Agency
SPPA	Senior Provincial Program Advisor
TBA	Traditional Birth Attendant
UNDP	United Nations Development Project
UNICEF	United Nations Children's Fund
Vil	Village
Vil Cov	Village Covered
VIL-HC	Distance from Village to Health Center
WASH	Water, Sanitation and Hygiene
WRM	Water Resource and Meteorology

Glossary

C/S Fund: The Commune/Sangkat Fund is established and managed by the Government of Cambodia to provide financial support for development projects and administrative costs of Commune/Sangkat Councils. The amount is determined as a percentage of the National Budget (for 2009: 2.8% over the 2008 budget) and is expected to increase gradually over the years. The total 2009 budget under this fund is \$ 27,643,902 (of which \$ 19,272,170 is for Development Projects and \$ 8,371,731 for Administration). Under the Rural Investment and Local Governance Project the World Bank currently reimburses the costs of development projects if these meet the Bank's criteria.

CDB: the Commune Data Base is a national database, compiled by the Ministry of Planning, on the basis of detailed questionnaires, completed at village and commune level, which are then sent to the Departments of Planning for data entry. The most recent round of data collection took place at the end of 2008 (and is reflected in the District Data Books). Commune, District and Provincial Profiles can be generated from this database and should be available from provincial Departments of Planning.

CDPD: the Commune Development and Planning Database is a database maintained by Departments of Planning and Ministry of Planning, recording proposed activities as determined and prioritized by Commune and Sangkat Councils; the Temporary Agreements between these councils and supporting agencies, as decided at District Integration Workshops and details on projects that actually take place at commune, district and provincial levels.

CIP: The Commune Investment Plan is a rolling three-year plan, developed and decided by the Commune or Sangkat Council. It sets priorities and identifies the projects proposed for the years to come.

Commune and Sangkat (C/S): the Communes (in rural areas) and Sangkats (in urban areas) are the lowest and smallest units of local government. Councils are elected directly, once in five years, for the 1417 Communes and 204 Sangkats. In the C/S there are 14,119 villages, which have Village Chiefs, but don't constitute a formal level of local government.

DIP: the District Initiative Project is jointly supported by the MDLF (Multi-Donor Livelihood Facility (supporting the NRM&L Program)) and PSDD. In 2009 it covers 106 districts, 60% of the total in the country, with a budget of \$ 3.2 million. It is focused on capacity development in planning, democratic development, public competitive procurement, financial management and service delivery.

DIS: The District Information System is a national database maintained by NCDD, recording resources, staff, revenue, infrastructure and equipment available in the 193 Districts and Khans throughout the country. The last update took place in July 2009.

District, Municipality and Khan constitutes the third level of Government in Cambodia. There are 159 rural Districts, 26 Municipalities and 8 Khans of Phnom Penh Capital. They all have Councils which were, for the first time, elected in May 2009, by the Commune/Sangkat Councilors. These councils have a mandate for 5 years.

DIW: District Integration Workshops are held between July and October, to bring Commune/Sangkat Councils, looking for support for their projects, together with the governmental and non-governmental agencies that may provide support.

ICC: Inter Communes Council projects are executed in 10 provinces under the Democratic and Decentralized Local Governance Project (DDLG). This five year project (2006-2010) is executed by Ministry of Interior and funded by the European Commission and UNDP. The project focuses on improving dialogue partnership and accountability; create a network of Commune Councils at the provincial and national level and support and contribute to local area development for poverty reduction. The work under the ICC component supports investments and services formulated through inter-commune dialogue and planning.

MEDiCAM: A non-profit and non-partisan membership organization for NGOs active in Cambodia's health sector. It is the primary networking agency for health-related NGOs.

NCDD: the National Committee for sub-National Democratic Development is the inter-ministerial body charged with the implementation of the Organic Law (a key legislative document, adopted in 2008, outlining the envisaged decentralization). NCDD also channels substantial financial assistance by a number of Development Partners, to projects and programs at various levels. This amounted to over \$ 91 million in 2008. More information at: www.ncdd.gov.kh. This website also provides access to reports, manuals, legal documents, details on projects and more.

OD: the Operational Districts are the districts as defined and used by the Ministry of Health. These do not coincide with the 193 (Administrative) Districts and Khans, as used by all other RGC agencies. The Operational Districts are usually larger, and so there are 77 Operational Districts against 193 administrative Districts and Khans. However they do fit within the boundaries of administrative provinces.

PID: The Project Information Database is the database maintained by NCDD at national and sub national level, to follow all aspects of projects by Commune and Sangkat Councils, including the C/S Fund projects

Provincial Investment Fund (PIF)

The Provincial Investment Fund is allocated to all Provinces and Municipalities according to a population based formula. Part of the fund is earmarked for support to planning activities of the Provincial / Municipal Department of Planning; and to gender mainstreaming activities of the Provincial Department of Women's Affairs. The remaining "un-earmarked PIF" is allocated by PRDC to sectoral technical departments against established criteria and in response to proposals with prioritisation taking into account: priorities formulated by the CS Councils and aggregated by District into District Priority Activities Matrices (DPAM); alignment with national planning and poverty alleviation criteria, complementarity with other planned activities; and performance of the Department concerned in implementation of activities in previous years. With this provisional allocation, the Department then programs activities through the District Integration Process. Finally, the agreed activities, plus support costs amounting to no more than 25% of the total, are included in a sub-contract signed between PRDC and the Department, pursuant to the overall PSDD contract signed between NCDD and PRDC. Total budget has been around \$ 2 million per year.

Province: the 23 Provinces and Phnom Penh Capital City represent the 2nd layer of government. They vary in size, from very small, like Kep (approx. 36,000 people) and Pailin (approx. 70,000 people), or large but with small populations, like Mondulkiri (over 60,000 people), and Ratanakiri (over 153,000) to densely populated and large, like Kampong Cham (over 1.7 million people) and Kandal (approx. 1.4 Million people).

PSDD: the Project to Support Democratic Development through Decentralization and Deconcentration is funded by DFID (UK), SIDA (Sweden) and UNDP and runs from 2006 till the end of 2010 (including a one year extension). Annual budgets range from \$ 11 million to over \$ 18 million. The project provides core technical support to NCDD and to the provinces, financial support to the C/S Fund, District Initiative, Provincial Investment Fund and capacity building support through training, studies and advisory services.

RILGP: The Rural Investment and Local Governance Project is a World Bank funded project that provides substantial support to C/S Fund projects and to developing the required infrastructure, policies, systems and skills. It started in 2003 with a Loan for \$ 22 million for 2003-2007 and was then extended with a Grant of \$ 36 million for the period of 2007-2010. Discussions about a possible RILGP 2 are taking place between RGC and the World Bank.

RPRP: the Rural Poverty Reduction Project is a seven year project from 2004 till 2010, funded by IFAD and UNDP and implemented through the Ministry of Agriculture, Forestry and Fishery, supported by the Ministry of Interior and facilitated by NCDD. The project is active in the provinces Prey Veng and Svay Rieng and focuses on 120,600 households below poverty line. The objective is poverty reduction with the active participation of the poor through improved livelihoods, Strengthened capacity, Sustainable farming systems and natural resource management, new and/or rehabilitated infrastructure development, increase accessibly to technology, services and markets for their economic and social development.

RULIP: the Rural Livelihoods Improvement Project is implemented by the Ministry of Agriculture Forestry and Fisheries (MAFF)' Project Support Unit- PSU, with the NCDD playing the role of cooperating agency. Funded by IFAD and UNDP, the project will run till 2014. The target group consists of poor households who have little or even no land, few livestock or other assets and often many dependents. The main goal of the project is to directly or indirectly improve the livelihood systems, food security and incomes of a total of 33,900 rural poor, ethnic minority and female headed households in targeted village of Kratie, Preah Vihear and Ratanakiri provinces in a sustainable manner.

Seth Koma: The UNICEF funded Seth Koma program focuses on measurable action for children and women. During 2006 -2010 it is implemented in six provinces. Government and UNICEF pursue a set of inter-related goals, addressing critical stages of the life cycle of the child: a) Mothers have safe pregnancies and deliveries and healthy newborns; b) best possible start in life of infant; c) Children enter schools at the right age of six years; d) Children are protected from exploitation, abuse, violence, discrimination and other risks; and e) Youth and adolescents acquire life skills, express their views, participate in the decisions.

Preface

The Government of Cambodia attaches great importance to optimal use of scarce resources and to participatory planning and management at all levels. The Organic Law which was adopted in 2008 provides the legal context for further steps towards improving and decentralizing planning, management and monitoring, and towards greater accountability and transparency of institutions at sub-national levels.

The Government has established elected Councils at the sub-national levels, and we will progressively give them the responsibilities, together with the human and financial resources, to deliver a wide range of public services. They will be more democratic, more efficient, more transparent and accountable, better at addressing gender and other inequalities, and at fighting corruption. We recognize that development does not come from government alone; it needs the involvement of citizens, civil society and the private sector, and the new system will facilitate this.

A central element in this process is the availability of information on any aspect of development to all concerned parties. The newly elected Councillors at District and Khan level, line departments operating at these levels, but also NGOs, Development Partners, Commune Councillors and citizens throughout Cambodia need information on problems and requirements, resources and opportunities, services and agencies, plans and projects. They will need such information to better understand the present situation, set targets for the future, monitor progress, know what others are doing and to apply resources wisely and this is the reason the District Data books will be so valuable.

The District Data Books are a major step towards full transparency and towards informed planning and decision-making. They provide all available data at District, Khan, Commune and Sangkat level in easily accessible formats, in Khmer and English, through over 16,000 printed copies, CD-ROMs and the NCDD website.

This is the first time in Cambodia (and possibly in South East Asia) that such detailed information is made so widely available and NCDD should be commended for the hard work that has gone into this. We also thank the Ministry of Planning, which provided the detailed data of the Commune Data Base, the sectoral ministries and provincial authorities who contributed data and the Development Partners who provided financial support.

It is our sincere hope that the publication of the District Data Books will strengthen capacities, especially at district levels, for evidence-based development planning. We also hope that this information will deepen the understanding among Ministries, Provincial Authorities, Development Partners, NGOs and research agencies of the realities at commune and district levels.

We call upon all to use and distribute this information, complement or correct where appropriate and to contribute new data in the years to come.

Sar KHENG

Deputy Prime Minister, Minister of Interior and Chairman of NCDD

Introduction

Purpose

The purpose of the District Data Books is to bring together information on any aspect of life and development of Districts, Khans, Communes and Sangkat, together and make this widely available. The primary targets are the newly elected District Councilors, district level line departments, provincial agencies, Development Partners and NGOs operating at this level. They need detailed knowledge on current living conditions, natural resources, infrastructure, agriculture and other economic activities, current service levels, past and planned projects and available resources.

While much information exists on many of the above aspects, it is often hard to access that information and much is lost to reports, databases and statistics that are not widely shared. Data are often only available in one language and often out-of-date, and many reports cover only one sector or region.

We found that these problems are especially acute at the district level. Now that Districts are becoming a much more significant level of local government and development planning, there is an urgent need for wide-ranging data to be used for setting base-lines, planning and prioritizing, monitoring and learning.

Approach

We have attempted to identify and compile all available statistics, reports, maps and other data at district and/or commune level. From this we have selected information that is available for all or most districts, reasonably reliable and up-to-date, sufficiently detailed and of possible interest to development planners, decision makers, agencies and citizens.

The major sources of the information in these District Data Books are:

- a) The Commune Data Base information over the years 2006 to 2009 (the most recent data were collected late last 2008), as compiled by the Ministry of Planning
- b) Detailed information directly collected from the Ministry of Health, the Ministry of Education, Youth and Sports and (for maps) the Ministry of Land Management, Urban Planning and Construction
- c) The Project Information Database (PID) at NCDD (up-to-date)
- d) The Commune Development and Planning Database (CDPD) (up to date)
- e) The District Information System (DIS) (updated per Mid 2009)
- f) Direct data collection at provincial and district level on private sector, irrigation, roads, and electricity, through provincial agencies
- g) Medical data collected from MEDiCAM
- h) The ID Poor Project – for poverty data on a number of provinces and districts
- i) NCDD's work on predictive poverty rates
- j) Specific projects for outputs, plans and budgets (Seth Koma, RILGP, RPRP and ICC)

Limitations of the data

We are fully aware that the data we collected are not always complete, consistent or correct. While we have rejected information that was wrong or very incomplete, we decided not to aim for statistical and scientific perfection, but to include information that is useful, relevant

and comprehensive. We also accepted different sources for the same data as this may encourage discussion on the quality of the respective data.

We strongly encourage anyone who notes errors or incompleteness in these data to contact us and to share their data. We hope that the next round of producing such District Data Books can draw on wider sources and more complete data.

We encourage the District Administrations, who receive these data also in digital format, not only to use these for their planning and monitoring, but also to start correcting and updating these data and to share new data with NCDD for future use.

Contents

The information in the following pages is organized in five sections:

- a) **Geographical data:** this section provides maps on infrastructure and administration and on land use and natural resources management. These maps are also provided in large format to all Districts and Khans.
- b) **District Profile:** this presents wide ranging data, covering 2006 – 2009, at district and commune level, extracted from the Commune Data Base, but edited for better understanding.
- c) **Plans and Projects:** this section presents development priorities determined by Commune and Sangkat Councils, Temporary Agreements, outputs and expenditure of major projects at Commune and District level over 2006 – 2008 and plans and budgets for 2009.
- d) **Services and Organizations:** this section provides details on key infrastructure (roads, electricity, irrigation systems) and services in health and education at district and commune level. It also provides an inventory of resources at the District Administration, NGOs operating in the district and private sector agencies active in the district.
- e) **Poverty Data:** this section provides predicted poverty rates for 2009 for all districts and communes and detailed poverty data compiled and processed by the ID Poor project for those that have been covered by this project.

The future

It is our hope that this is the start of a longer-term process. We hope that a next edition of these District Data Books will offer more comprehensive, correct and up-to-date information. We hope that the District Administrations will not only start using this information, but also improve and update it. For this they are all provided with the full data set in digital format.

We invite agencies, projects and experts to send reports, statistics and maps that could be used for a next version to us and we invite all users of the District Data Books to inform us about errors, updates and inconsistencies. Please contact us through info@ncdd.gov.kh

We now invite you to browse through this data book. You may open this randomly or use the table of contents and go to the aspects that have your special interest.

We hope that you will be informed, surprised and assisted. We hope, above all, that this information will lead to a deeper understanding of causes and effects of poverty, to purposeful decisions on how to tackle those causes and to greater transparency in using scarce resources for the benefit of all.

Martin de Graaf
Program Advisor, PSDD/NCD

SECTION A: GEOGRAPHY

1 Administration and Infrastructure

Please see separate folder containing A3 maps.

2 Land Use and Natural Resources

Please see separate folder containing A3 maps

3 Geography

3.1 Land Area

Total Land Area (ha)	Forest Land Area (ha)		Cultivation Land Area (ha)	Construction Land Area (ha)	Other Land Area (ha)
	Total	Flooded Forest Area			
152500	129672	0	16323	6388	117

3.2 Distances between Offices

Location	Distance (Km)
From District Office to C/S Office of Sangkat Bansay Reak	9
From District Office to C/S Office of Sangkat Bos Sbov	6
From District Office to C/S Office of Sangkat Koun Kriel	10
From District Office to C/S Office of Sangkat Samraong	0
From District Office to C/S Office of Sangkat Ou Smach	42

SECTION B: DISTRICT PROFILE¹

¹ All data in this section come from the Commune Database (CDB) unless otherwise specified. These include primarily new CDB data, collected late 2008, and some data from earlier years. Please note that percentages are rounded to the nearest whole number.

1 General Information

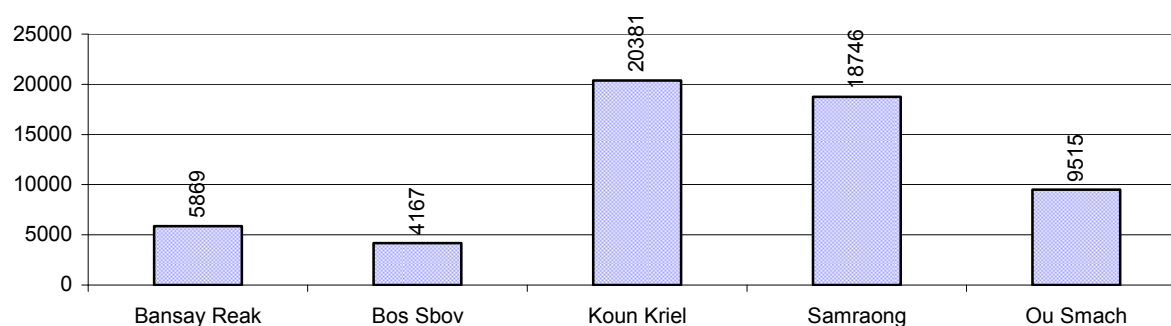
1.1 Population of the District

1.1.1 Total Population

Number of families	2005	2006	2007	2008
Total number of families	8,173 families	8,755 families	10,293 families	11,919 families
Increase (+)/Decrease (-) in nr of families		7%	18%	16%
Total population	40,869 pers	43,101 pers	51,392 pers	58,678 pers
Increase (+)/Decrease (-) in nr of people		5%	19%	14%
Number of female Headed Households (HH)	1,443 families	1,757 families	1,702 families	1,689 families

Note: Percentages of population and increase/decrease are calculated on basis of the previous year. A negative sign in front of the percentage indicates a decrease in population.

1.1.2 Population, by Commune, in 2008



1.1.3 Population, by Age Group, over 3 years

Population by age group	2006	2007	2008	
	%	%	%	Number
Age 0-5 years (as percentage of the population)	15%	16%	15%	8,766 persons
Male 0-5 yrs	53%	57%	53%	4,625 persons
Female 0-5 yrs	47%	43%	47%	4,141 persons
Age 6-17 (as percentage of the population)	30%	31%	30%	17,822 persons
Male 6-17 yrs	50%	51%	52%	9,318 persons
Female 6-17 yrs	50%	49%	48%	8,504 persons
Age 18-60 (as percentage of the population)	52%	50%	52%	30,261 persons
Male 18-60 yrs	49%	51%	51%	15,348 persons
Female 18-60 yrs	51%	49%	49%	14,913 persons
Age 61 above (as percentage of the population)	3%	3%	3%	1,829 persons
Male 61	42%	45%	45%	821 persons
Female 61	58%	55%	55%	1,008 persons

Note: The overall percentage for each age group is calculated on the basis of the total population. The gender distribution of each group is calculated on the basis of the population within that particular age group.

1.2 Occupations

1.2.1 Percentage of families with a particular Occupation over 3 years

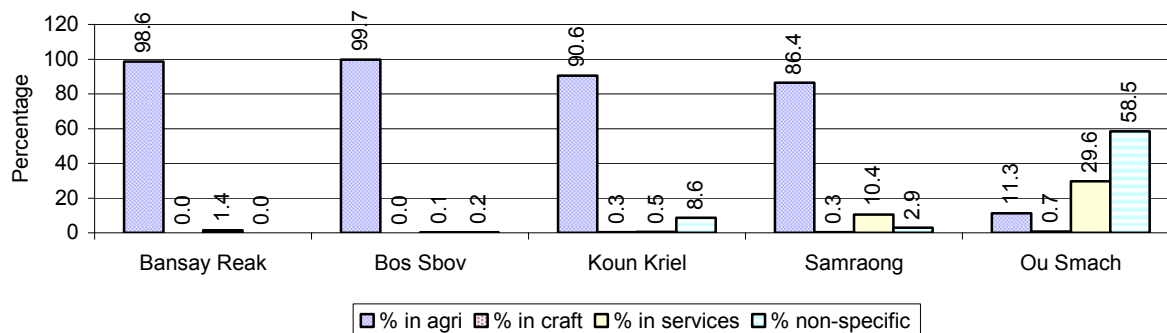
This table shows the percentage of the population who have a particular occupation (job), for example the percentage of the population in the district who are rice farmers, furniture crafter, trader, etc.

Description	2006	2007	2008	
	%	%	%	Number
Families whose main occupation is agriculture	75%	73%	78%	9,321 Families
Families whose primary occupation is rice farming	68%	66%	73%	8,655 Families
Families whose primary occupation is cultivating long-term crops	2%	2%	2%	180 Families
Families whose primary occupation is cultivating short-term crops	2%	3%	1%	92 Families
Families whose primary occupation is cultivating vegetable	1%	1%	1%	70 Families
Families whose primary occupation is fisherman	0%	0%	0%	30 Families
Families whose primary occupation is livestock farmer	1%	0%	0%	18 Families
Families whose primary occupation is NTFP collection	1%	1%	2%	276 Families
Families whose main occupation is craft work	0%	0%	0%	37 Families
Families, whose main occupation is in furniture craft, wooden, rattan, vine, bamboo	0%	0%	0%	24 Families
Families whose main occupation is in metal, aluminum, glass goods production	0%	0%	0%	9 Families
Families whose main occupation is food production	0%	0%	0%	0 Families
Families whose main occupation is tire, plastics and rubber goods production	0%	0%	0%	0 Families
Families whose main occupation is textile, clothing goods production	0%	0%	0%	0 Families
Families whose main occupation is in other production, not listed above	0%	0%	0%	4 Families
Families whose main occupation is services	9%	9%	8%	965 Families
Families whose main occupation is trade	7%	7%	6%	769 Families
Families whose main occupation is repair	1%	1%	1%	121 Families
Families whose main occupation is providing transport services	0%	0%	0%	34 Families
Families whose main occupation is providing other services	1%	2%	0%	41 Families
Families whose main occupation is not clear (or multi)	16%	18%	13%	1,596 Families

Note: The occupation percentages are calculated on the basis of the total number of families.

1.2.2 Percentage Families that work in one of four occupational sectors, by Commune in 2008

This table indicates the percentage of families involved in one of four occupation types: agriculture, craft, services or non-specific (other). Please note agriculture includes forestry activities such as cutting down trees and gathering gum from the trees.



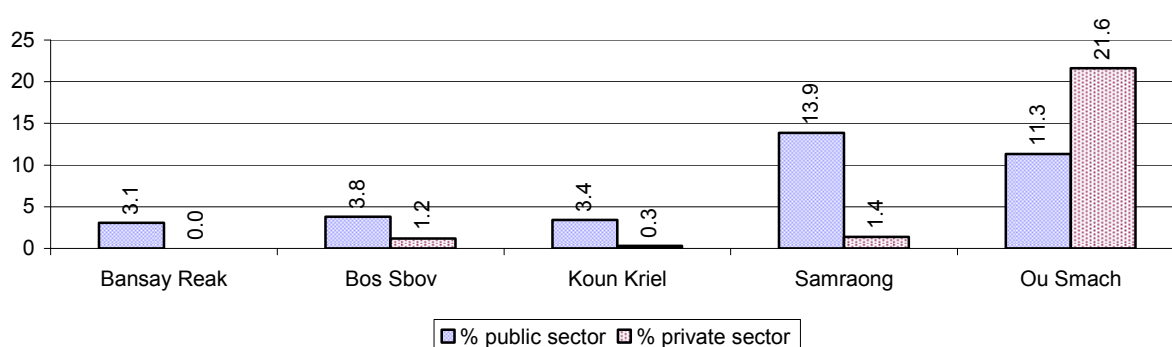
Note: Calculated on the basis of the total number of families within a commune.

1.2.3 Percentage of Families with public Sector, private Sector or uncertain Jobs, over 3 years

Description	2006	2007	2008	
	%	%	%	Number
Families that have a family member who is a government official, staff or worker	6%	7%	8%	922 families
Families that have a family member who is a private sector staff or worker	5%	4%	4%	481 families
Number of people aged 18-60 with uncertain/irregular jobs	11%	15%	17%	5,160 persons

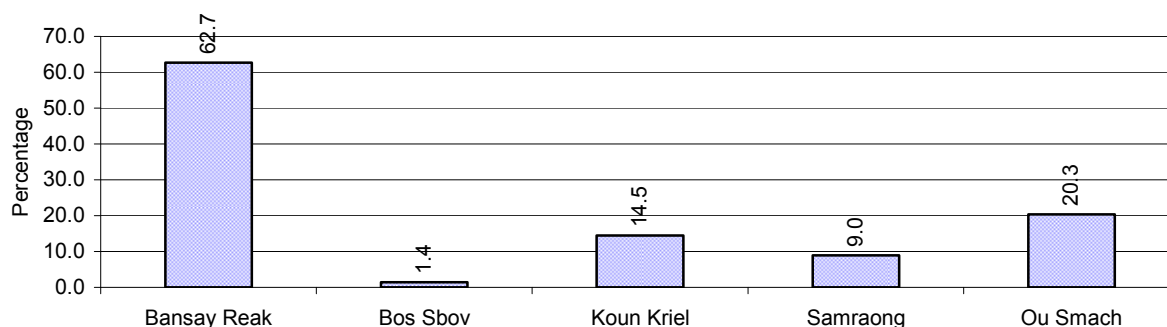
Note: In the first two rows percentages are calculated on the basis of the total number of families. In the third row the percentage is calculated on the basis of the total number of people aged 18-60 years.

1.2.4 Percentage of Families with public or private Sector Jobs, by Commune in 2008



Note: Calculated on the basis of the total number of families in the commune

1.2.5 Percentage of People aged 18-60 years with uncertain/irregular Jobs, by Commune, in 2008.



1.3 Property

1.3.1 Housing types and facilities over 3 years

This table shows the percentage of people living in a certain type of house. It also indicates how many houses have electricity or battery powered lights and how many have TV.

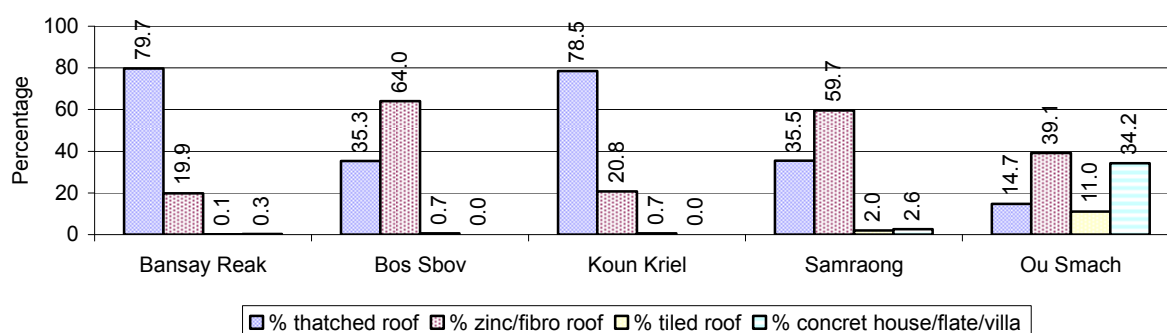
House Type	2006	2007	2008	
	%	%	%	Number
House with thatched roof	51 %	49 %	49 %	6,019 houses
House with zinc/fibro roof	41 %	45 %	39 %	4,753 houses
House with tiled roof	4 %	1 %	3 %	399 houses
Flats/apartments (with many families living)	2 %	3 %	4 %	451 houses
Concrete house or flat (with one family living)	1 %	2 %	5 %	590 houses
Villa house	0 %	0 %	0 %	4 houses
Houses with electricity	23 %	25 %	34 %	4,196 houses
Houses with battery light	33 %	31 %	30 %	3,612 houses
Houses with TV	32 %	31 %	41 %	4,984 houses

Note: Calculated against the total number of houses

1.3.2 Families living on public Land or without a permanent House

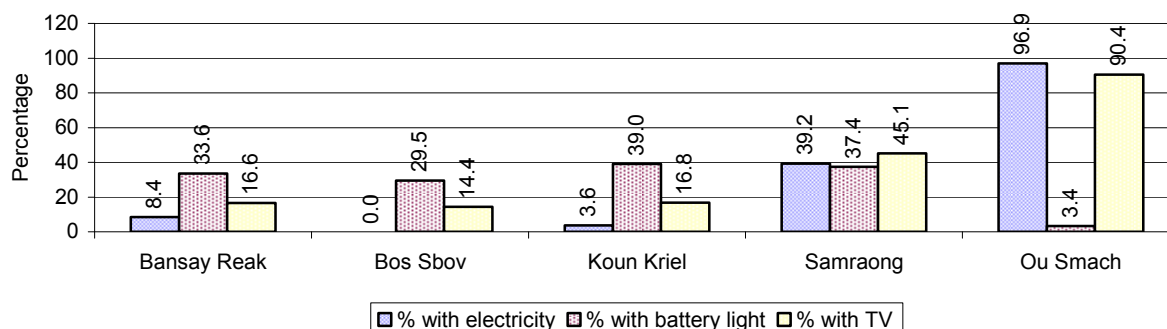
Living situation	2006	2007	2008
Families living in a house on public land	141 families	345 families	165 families
People, without permanent housing	36 person(s)	27 person(s)	92 person(s)

1.3.3 Percentage of Population living in a particular type of House, by Commune, in 2008



Note: Calculated against the total number of houses in each commune

1.3.4 Percentage of Houses with Electricity, Battery Lights and/or TVs, by Commune, in 2008



Note: Calculated against the total number of houses in each commune

1.3.5 Types of Vehicles and their ratio to Families across 3 years

This table shows the number of families per vehicle in the district. The last column shows the total number of each type of vehicle in the district for 2008.

Description	2006 ratio	2007 ratio	2008	
			Ratio	Number
Bicycle and bicycle with trailer	2	3	2	5,121
Ox-carts and horse-carts	5	6	9	1,274
Motorbike/with trailer	4	3	2	5,349
Motor tri-cycle	54	N/A	5,960	2
Large Transportation				
Total number of cars/trucks	31	35	26	455
Locally made vehicles	135	158	105	113
Trucks for goods transport	103	112	101	118
Buses/mini buses for passengers	350	1,470	627	19
Family cars	83	82	58	205
Agriculture machinery				
Tractors used for plowing	398	381	322	37
Power-tillage used for plowing	13	7	7	1,774
Other type of machinery				
Other type of machinery	584	1,144	284	42
Water transportation				
Row boats	4,378	N/A	N/A	0
Total number of motor boats	N/A	N/A	N/A	0
Motor boats used for fishing	N/A	N/A	N/A	0
Motor boats used for passengers	N/A	N/A	N/A	0
Motor boats used for goods transporting	N/A	N/A	N/A	0

Note: Ratio of families to a particular type of vehicle is the result of the total number of families divided by total number of that type of vehicle. Other types of vehicles, such as bulldozer, excavator, rollers etc. are not listed.

2 Infrastructure and Economy

2.1 Roads in meters over 3 years

Description	2006	2007	2008
Bituminous road	17,877 m	9,000 m	4,000 m
DBST, Macadam road	0 m	0 m	0 m
Concrete road	0 m	0 m	0 m
Laterite road	44,111 m	18,721 m	9,034 m
Constructed earth road	24,979 m	25,430 m	7,392 m
Un-constructed earth road	30,269 m	18,470 m	4,500 m

2.2 Sewerage Pipes in meters over 3 years

Description	Sewage pipe length		
	2006	2007	2008
Total length of sewage pipe, diameter 30-50 cm	0 m	0 m	4 m
Length of newly constructed sewage pipe, diameter 30-50 cm	0 m	0 m	0 m
Length of sewage pipe, diameter 30-50 cm needs repair/rehabilitation	0 m	0 m	0 m
Total length of sewage pipe, diameter of pipe 60-100 cm	186 m	6 m	344 m
Length of newly constructed sewage pipe, diameter 60-100 cm	10 m	42 m	8 m
Length of sewage pipe, diameter 60-100 cm needs repair/rehabilitation	0 m	6 m	21 m
Sewage pipe, diameter of pipe over 100 cm	13 m	2 m	0 m
Length of newly constructed sewage pipe, diameter over 100 cm	5 m	0 m	0 m
Length of sewage pipe, diameter over 100 cm needs repair/rehabilitation	3 m	2 m	0 m

2.3 Drainage and Bridges

Construction Type	2006		2007		2008	
	place(s)	Length	place(s)	Length	place(s)	Length
Single pipe culvert	33	151m	34	136 m	29	120 m
Double-pipe culvert	3	15m	1	5 m	4	24 m
Box pipe culvert	4	14m	3	9m	2	8 m
Wooden bridge	1	10m	0	0m	0	0 m
Concrete bridge	7	66m	4	96m	3	45 m
Bale bridge	0	0m	0	0m	0	0 m
Spillway construction	3	30m	2	21m	2	25 m

2.4 Services in the District

Descriptions	Number of places by year		
	2006	2007	2008
Public			
Electricity generating stations	0	0	0
Health clinics	2	18	22
Private			
Bicycle and motorcycle repair places	43	44	43
Agricultural machinery, tools and equipment repair places	7	8	11
Electronic tool repair places	5	3	3
Battery-charging services	30	34	40
Handicraft places, wooden furniture and forest by-products	12	9	2

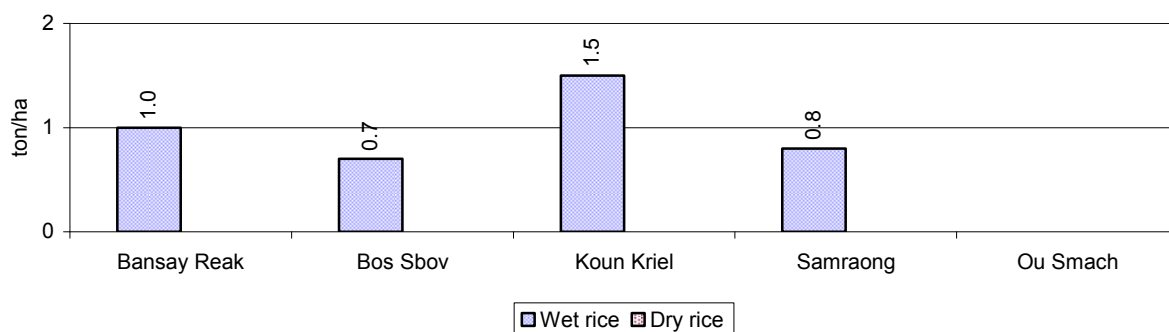
Descriptions	Number of places by year		
	2006	2007	2008
Other handicraft places (excluding furniture)	0	0	2
Small-scale services (hairstresser, phone service, massage, Karaoke, etc)	31	86	49
Small-scale food shop businesses (Food, groceries, drink shop, etc)	22	27	33
Small-scale rice mills	32	18	25
Medium or large-scale rice mills	20	17	29
Small-scale markets	5	6	6
Large-scale market	2	2	2
Alcohol refinery places	5	2	0
Pharmacies and small drug stores	13	7	0
Hotels	5	4	2
Guest houses	11	11	8
Restaurants	4	12	12
Gasoline stations	6	6	5

2.5 Agriculture

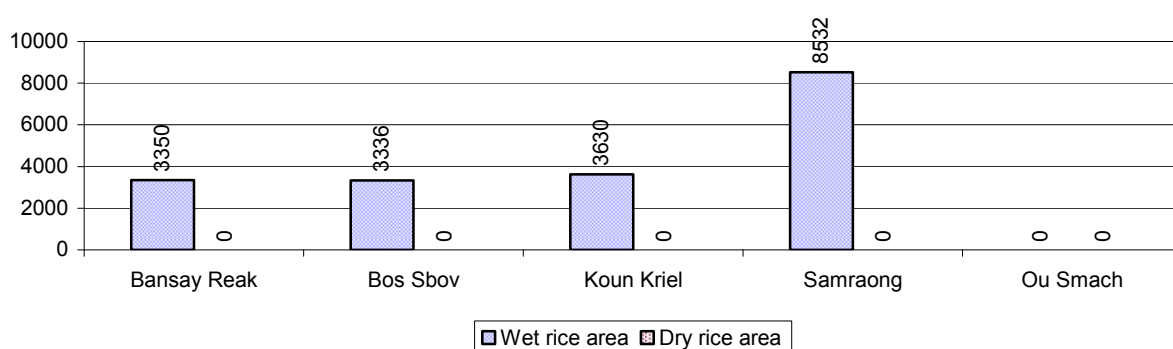
2.5.1 Rice cultivation in the District over 3 years

Description	2006	2007	2008
Total dry rice land area	0 ha	0 ha	0 ha
Actual dry rice cultivation area	0 ha	0 ha	0 ha
% actual cultivation to total land	-%	-%	-%
Total dry rice production	- tonne(s)	- tonne(s)	- tonne(s)
Average dry rice yield	- tonne(s)/ha	- tonne(s)/ha	- tonne(s)/ha
Total wet rice land area	16,516 ha	26,991 ha	23,531 ha
Actual wet rice cultivation area	16,480 ha	16,174 ha	18,848 ha
% actual cultivation to total land	100 %	60%	80%
Total wet rice production	15,930.67 tonne(s)	14,960.95 tonne(s)	18,848.00 tonne(s)
Average wet rice yield	1.0 tonne(s)/ha	0.9 tonne(s)/ha	1.0 tonne(s)/ha
Total intensive rice land area	0 ha	0 ha	0 ha
Actual intensive rice cultivation area	- ha	- ha	- ha
Average intensive rice yield	- tonne(s)/ha	- tonne(s)/ha	- tonne(s)/ha
Actual upland rice cultivation area	335 ha	58 ha	5 ha
Total upland rice production	290 tonne(s)	46 tonne(s)	3 tonne(s)
Average upland rice yield	0.9 tonne(s)/ha	0.8 tonne(s)/ha	0.5 tonne(s)/ha

2.5.2 Estimated wet and dry Season Rice Yield in tonne(s)/Ha, by Commune, in 2008



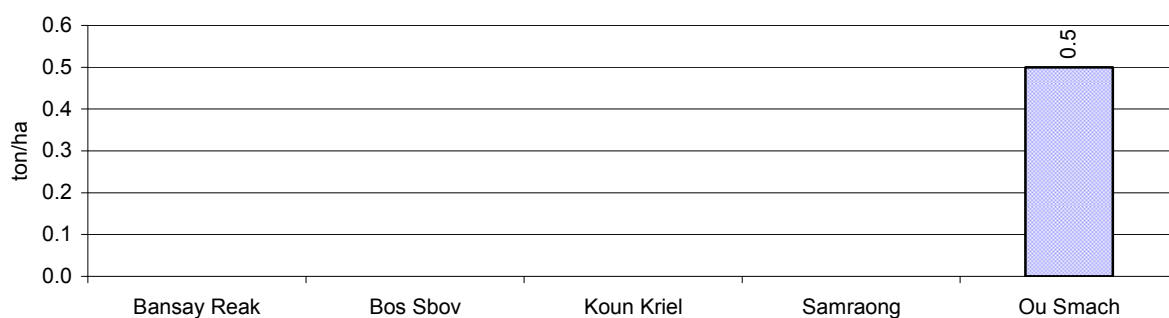
2.5.3 Cultivated wet and dry Season Rice areas in Ha, by Commune, in 2008



2.5.4 Estimated intensive Rice Yields in tonnes/Ha, by Commune, for 2008

There were no estimated intensive rice yields in this District in 2008

2.5.5 Estimated upland Rice Yield in tonnes/Ha, by Commune, for 2008

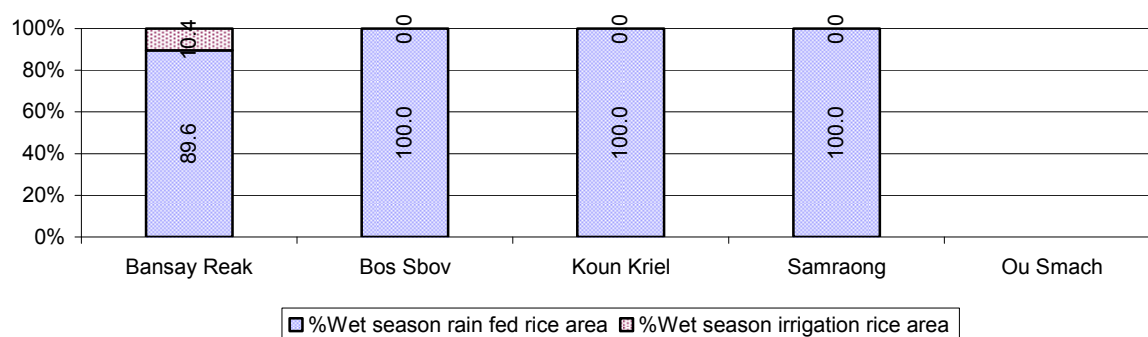


2.5.6 Wet season Rice irrigation across 3 years

Description		2006 %	2007 %	2008	
				%	Number
Total area of wet season rain fed rice land		100%	100%	98 %	18,498 ha
Percentage of wet season rice land that is irrigated; and for 2008 area in Ha		0 %	0 %	2 %	350 ha
Where	Area irrigated from canal/dam	- %	- %	43 %	150 ha
	Area irrigated from river, stream, lake, natural pond	- %	- %	57 %	200 ha
	Area irrigated from drilled well	- %	- %	0 %	0 ha
	Area irrigated from dug pond	- %	- %	0 %	0 ha

2.5.7 Water sources for wet Season Rice Cultivation, by Commune, in 2008

This chart shows the percentage of wet season rice cultivation receiving water from rain (natural) and from irrigation.



2.5.8 Access to Irrigation

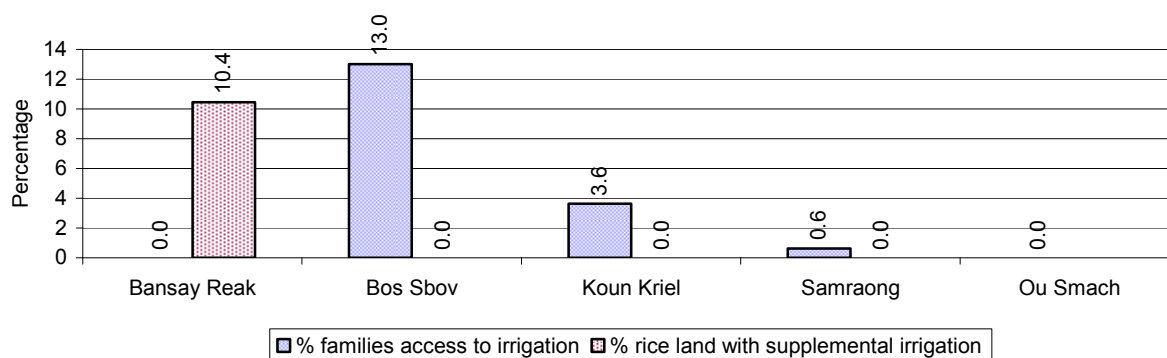
Description	2006 %	2007 %	2008	
			%	Number
Families who have access to irrigation water	5%	5%	3%	275 families
Families who have irrigation wells	2%	2%	2%	216 families

Note: Calculated against the total number of families are rice farmers

2.5.9 Number of Irrigation Wells over 3 years

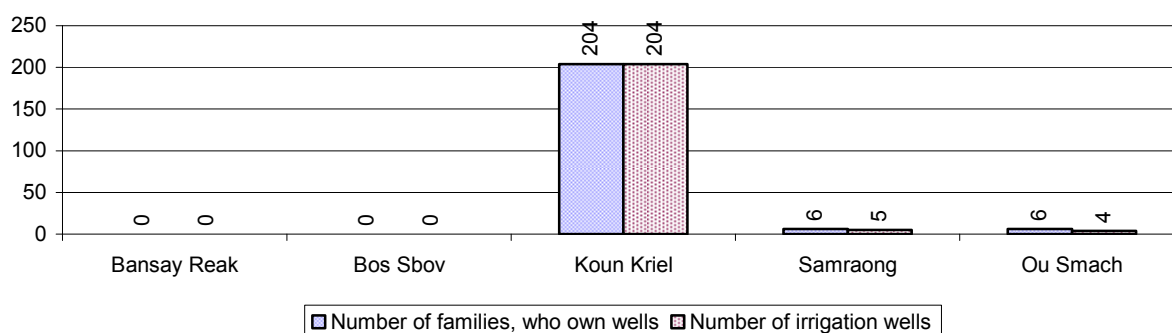
Description	2006	2007	2008
Number of irrigation wells	21 wells	20 wells	213 wells

2.5.10 Percentage of Families with access to (supplemental) Irrigation for wet Season Rice cultivation, by Commune, in 2008



Note: % of families, with access to irrigation is calculated against the total number of families, whose main occupation is rice farming. Irrigated wet rice land area is calculated against the total actual wet rice land cultivated areas

2.5.11 Irrigation Wells, by Commune, in 2008

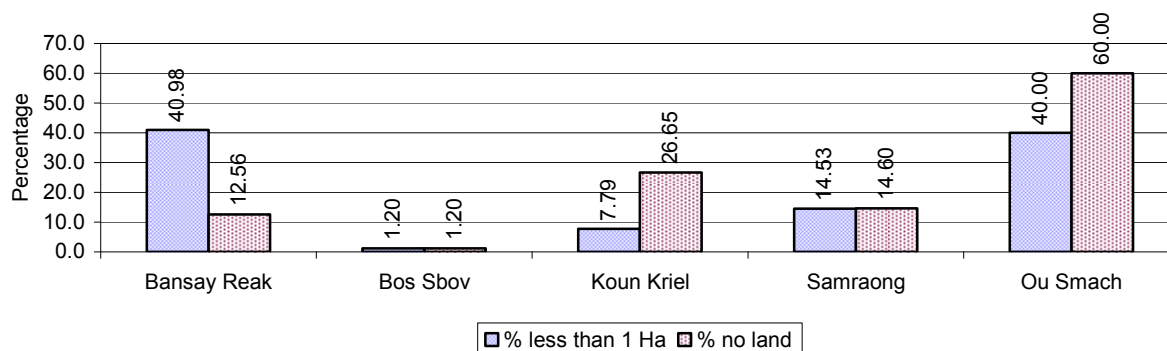


2.5.12 Farmers owning less than one hectare of Rice Land

Description	2006 %	2007 %	2008	
			%	Number
Families who have less than one hectare of rice land	14%	15%	13%	1,162 families
Families who do not own any rice land	14%	11%	18%	1,578 families

Note: Calculated on basis of total number of families who are rice farming

2.5.13 Percentage of Farmers with less than one Hectare or no Rice Land, by Commune, in 2008

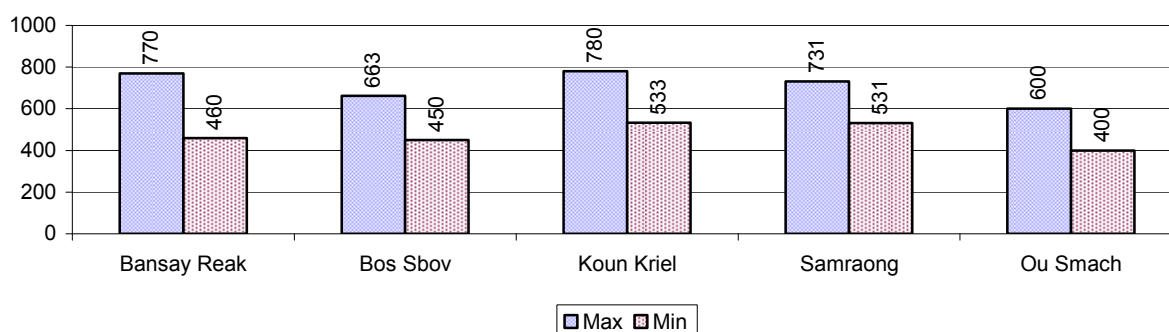


Note: Calculated on basis of total number of families who are rice farming

2.5.14 Average farm-gate Prices of Rice, over 3 years

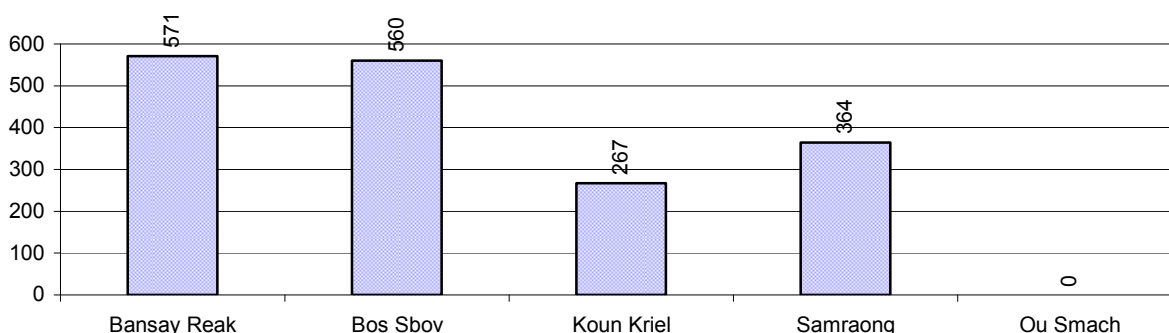
Description	2006	2007	2008
Maximum average farm gate price	456 Riels/Kg	651 Riels/Kg	709 Riels/Kg
Minimum average farm gate price	332 Riels/Kg	476 Riels/Kg	475 Riels/Kg
Average farm gate price	394 Riels/Kg	564 Riels/Kg	592 Riels/Kg
Average rice production per person	376 Kg/person	292 Kg/person	321 Kg/person

2.5.15 Minimum and maximum farm-gate Prices of Rice in Riel/kg, by Commune, in 2008



2.5.16 Production of Paddy in Kgs/Person, by Commune, in 2008

This table shows how much paddy (harvested rice) is produced in a year in a commune, in kgs per person.

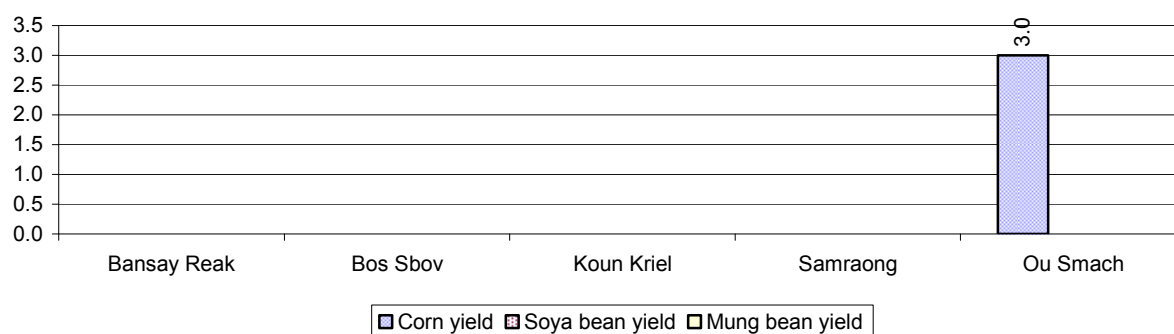


2.5.17 Production of other Crops, over 3 years

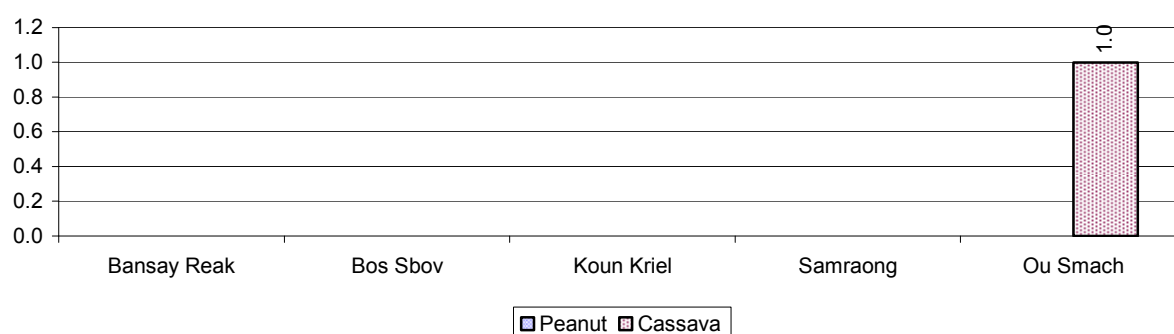
Crops	2006	2007	2008
Corn cultivation area	6 ha	11 ha	300 ha
Estimated corn yield	0.7 tonne(s)/ha	0.6 tonne(s)/ha	3.0 tonne(s)/ha
Estimated corn production	4 tonne(s)	7 tonne(s)	900 tonne(s)
Soya bean cultivation area	0 ha	0 ha	0 ha
Estimated Soya bean yield	- tonne(s)/ha	- tonne(s)/ha	- tonne(s)/ha
Estimated Soya bean production	- tonne(s)	- tonne(s)	- tonne(s)
Mungbean cultivation area	8 ha	2 ha	0 ha
Estimated Mungbean yield	0.8 tonne(s)/ha	0.3 tonne(s)/ha	- tonne(s)/ha
Estimated Mungbean production	6 tonne(s)	1 tonne(s)	- tonne(s)
Peanut cultivation area	3 ha	0 ha	0 ha

Crops	2006	2007	2008
Estimated Peanut yield	0.2 tonne(s)/ha	- tonne(s)/ha	- tonne(s)/ha
Estimated Peanut production	1 tonne(s)	- tonne(s)	- tonne(s)
Cassava cultivation area	0 ha	0 ha	5 ha
Estimated Cassava yield	- tonne(s)/ha	- tonne(s)/ha	1.0 tonne(s)/ha
Estimated Cassava production	- tonne(s)	- tonne(s)	5 tonne(s)
Sweet potatoes cultivation area	0 ha	0 ha	0 ha
Estimated Sweet potatoes yield	- tonne(s)/ha	- tonne(s)/ha	- tonne(s)/ha
Estimated Sweet potatoes production	- tonne(s)	- tonne(s)	- tonne(s)
Sesame cultivation area	2 ha	0 ha	0 ha
Estimated Sesame yield	0.5 tonne(s)/ha	- tonne(s)/ha	- tonne(s)/ha
Estimated Sesame production	1 tonne(s)	- tonne(s)	- tonne(s)

2.5.18 Yields of Corn, Soya beans and Mungbeans in tonne(s)/ha, by Commune, in 2008



2.5.19 Yields of Peanuts and Cassava in tonne(s)/ha by Commune, in 2008



2.5.20 Yields of Sweet Potatoes and Sesame in tonne(s)/ha, by Commune, in 2008

There were no yields for any of these crops in this District in 2008

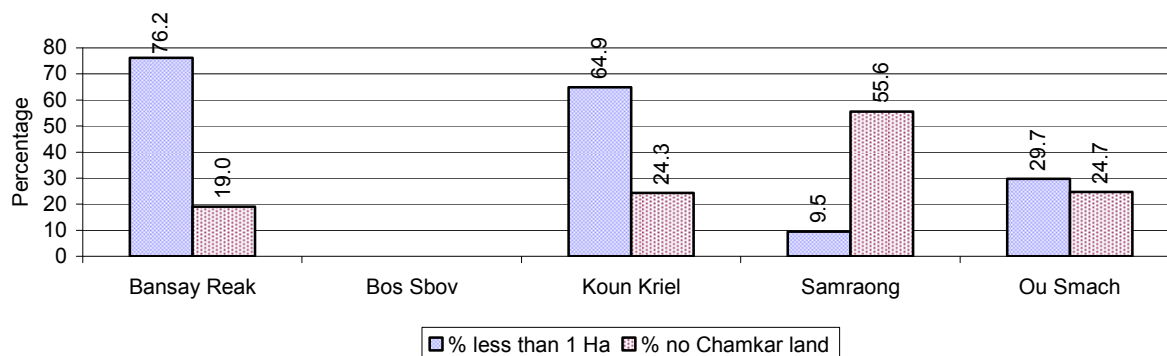
2.5.21 Percentage Farmers who own less than 1 Ha or no Chamkar land

Description	2006 %	2007 %	2008	
			%	Number
Families, who own less than 1ha of Chamkar land	36%	19%	29%	99 families
Families, with no Chamkar land	17%	2%	36%	122 families

Note 1: Calculated as a percentage of the total number of families whose main occupation is Chamkar (not rice) farming

Note 2: Chamkar land is no-rice land, i.e. other crops

2.5.22 Percentage Farmers owning less than 1 ha or no Chamkar land, by Commune, in 2008



Note: Percentage is calculated among families, who Chamkar farm as a main occupation, not the total population of the commune.

2.5.23 Percentage of Families raising Cattle/Buffalo, over 3 years

Description	2006 %	2007 %	2008	
			%	Number
Families raising cattle/buffalo	44%	39%	27%	3,241 families
Families raising cattle/buffalo as labor forces	26%	22%	13%	1,499 families

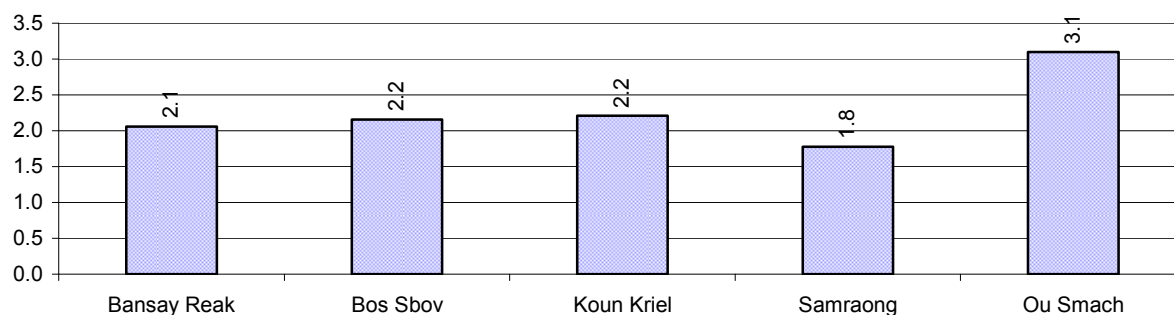
Note: Calculated against the total number of families.

2.5.24 Number of Cattle/buffalo being raised, over 3 years

Description	2006	2007	2008
Total number of cattle/buffalo	7,923 head(s)	9,015 head(s)	6,563 head(s)
Average cattle/buffalo per families	2.0 head(s)/families	2.3 head(s)/families	2 head(s)/families

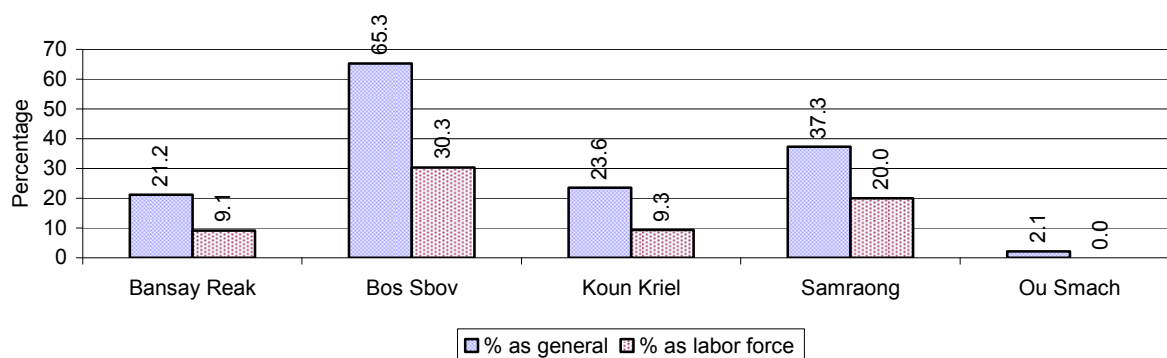
Note: Calculated by dividing total number of cattle/buffalo by total number of cattle/buffalo raising families

2.5.25 Average number of Cattle/Buffalo per Family, by Commune, in 2008



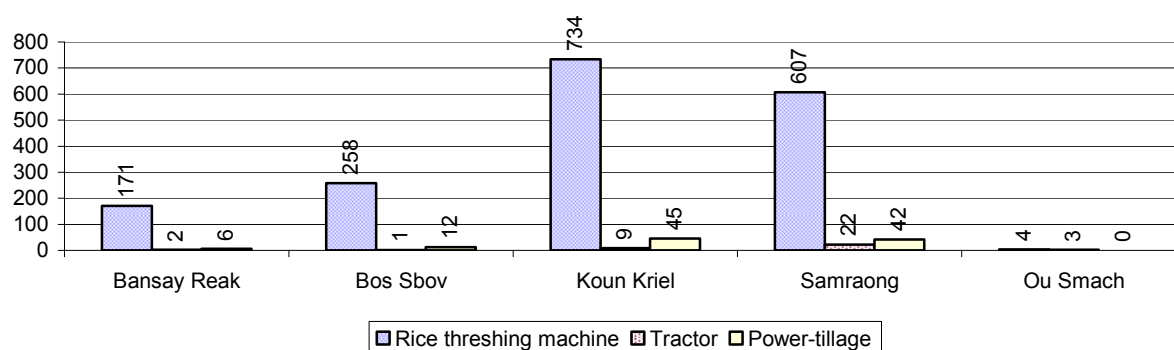
Note: Calculated by dividing total number of cattle/buffalo by total number of cattle/buffalo raising families

2.5.26 Percentage Families raising Cattle/Buffalo, for general and labor purposes in 2008, by Commune



Note: Calculated using the total number of families raising cattle/buffalo against the total number of families.

2.5.27 Type and number of agricultural Machines, by Commune, in 2008

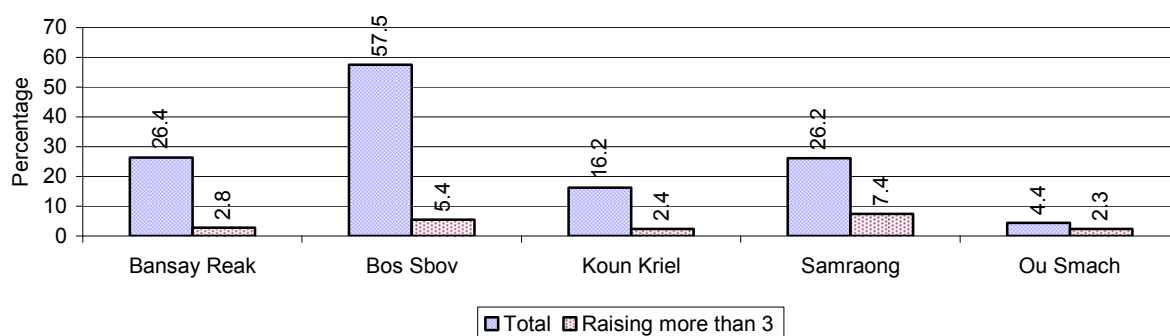


2.5.28 Livestock-producing Households over 3 years

Description	2006 %	2007 %	2008	
			%	Number
Total number of families raising pigs	31%	27%	21%	2,548 families
number of families raising more than 3 pigs	7%	6%	4%	489 families
Total number of families raising chickens	74%	73%	73%	8,653 families
number of families raising more than 3 chickens	61%	60%	60%	7,188 families
Total number of families raising ducks	14%	12%	10%	1,160 families
number of families raising more than 5 ducks	10%	11%	7%	805 families
Total number of families raising goats or sheep	0%	0%	0%	16 families
Total number of families raising horses	0%	0%	0%	5 families

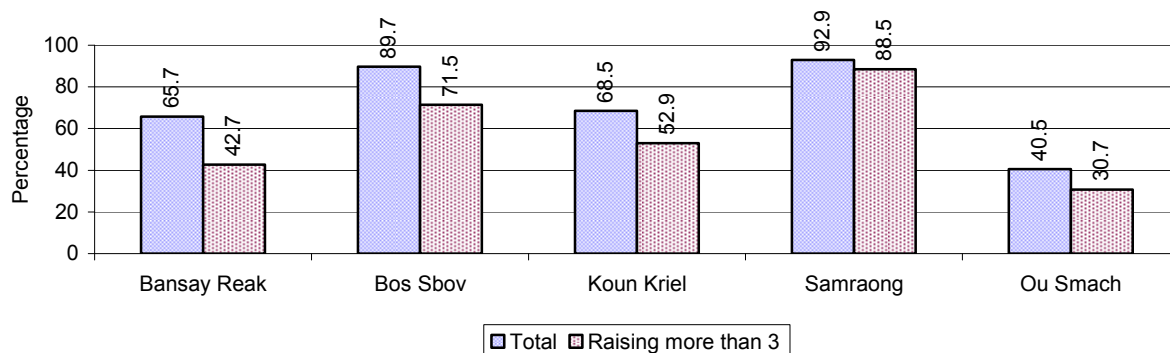
Note: Calculated against the total number of families

2.5.29 Percentage Families raising Pigs, by Commune, in 2008



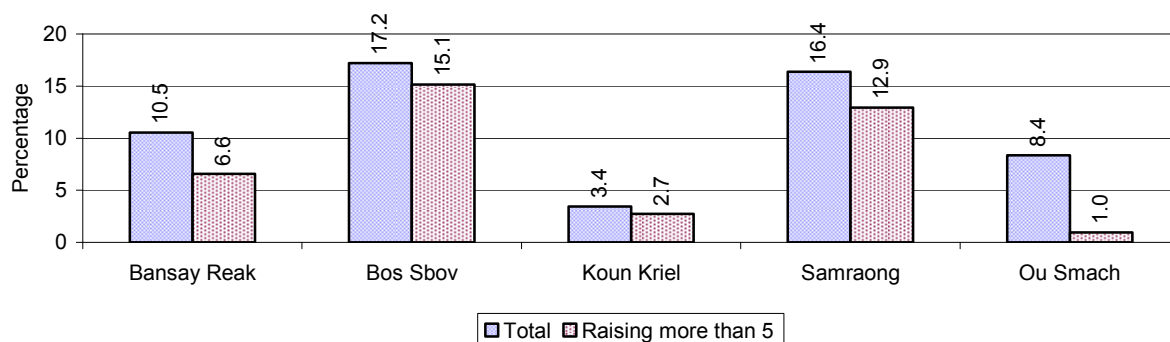
Note: Calculated against the total number of families in the commune

2.5.30 Percentage Families raising Chickens, by Commune, in 2008



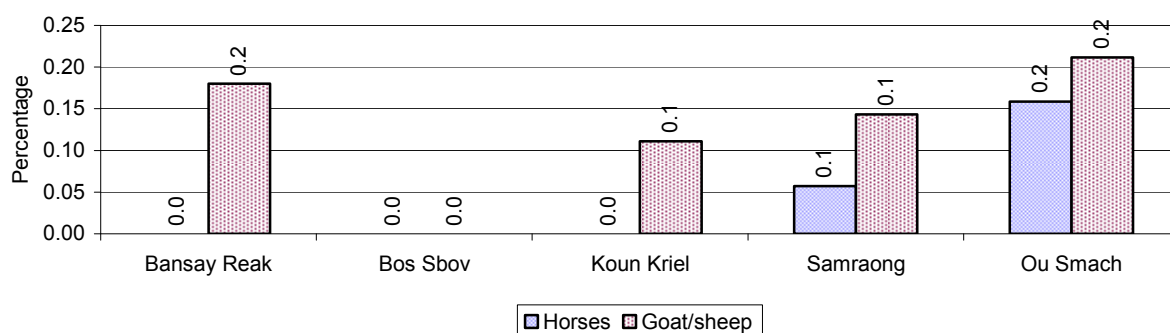
Note: Calculated against the total number of families in the commune

2.5.31 Percentage Families raising Ducks, by Commune, in 2008



Note: Calculated against the total number of families in the commune

2.5.32 Percentage Families raising Horses, Goats or Sheep, by Commune, in 2008

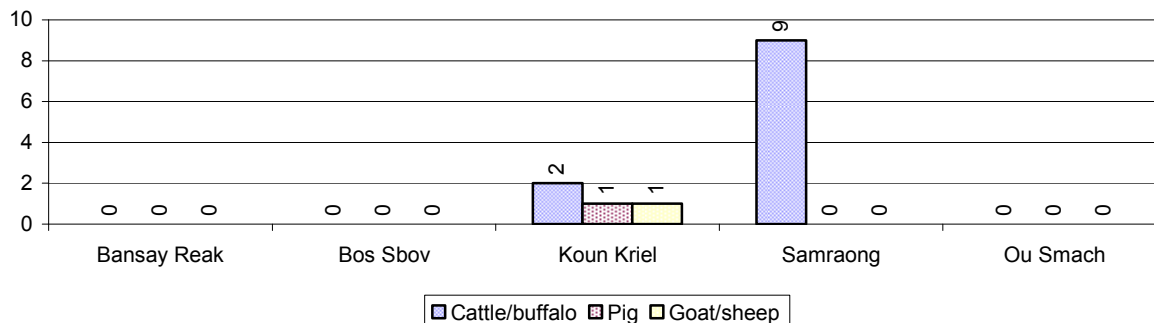


Note: Calculated against the total number of families in the commune

2.5.33 Livestock Farms over 3 years

Description	2006	2007	2008
Number of cattle/buffalo farms	1 farm(s)	41 farm(s)	11 farm(s)
Number of pig farms	2 farm(s)	1 farm(s)	1 farm(s)
Number of goat/sheep farms	1 farm(s)	1 farm(s)	1 farm(s)
Number of chicken farms	4 farm(s)	0 farm(s)	0 farm(s)
Number of duck farms	0 farm(s)	0 farm(s)	0 farm(s)

2.5.34 Number Livestock Farms, by Commune in 2008



Note: Number of farms are recorded by the village chief, not by counting number of livestock in each farm

2.5.35 Number Chicken and Duck Farms, by Commune, for 2008

There were no farms of this type in this District in 2008

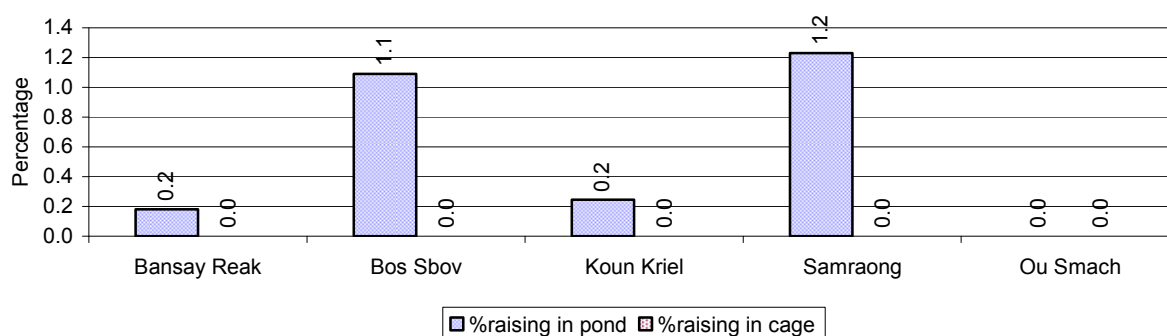
Note: Number of farm places recorded by village chief, not by counting number of livestock in each farm

2.5.36 Families raising Fish over 3 years

Description	2006	2007	2008
Total number of families raising fish	25 families	28 families	66 families
% families raising fish	0%	0%	1%
Number families raising fish in pond	25 families	28 families	66 families
% families raising fish in pond	0%	0 %	1%
Number fish pond	68 pond(s)	37 pond(s)	68 pond(s)
No. of ponds per family	2.7 pond/families	1.3 pond/families	1.0 pond/families
Number of families raising fish in cage	0 families	0 families	0 families
%families raising fish in cage	0 %	0 %	0%
Number of fish cage	0 cage(s)	0 cage(s)	0 cage(s)
No. of fish cage per family	- cage /families	- cage /families	- cage /families

Note: % of families raising fish or fish in ponds or cages is calculated a percentage of the total number of families.

2.5.37 Percentage of Families raising Fish, by Commune, in 2008



Note: Calculated as a percentage of the total number of families in the commune.

2.5.38 Shrimp and Prawn Farming over 3 years

Description	2006	2007	2008
Number of families raising shrimps	0 families	0 families	0 families
% Families raising shrimps	0%	0%	0%
Number of shrimp ponds	0 pond	0 pond	0 pond
Total area raising shrimps	0 ha	0 ha	0 ha
Area per family	-ha/families	-ha/families	-ha/families
Number of families raising prawns	0 families	0 families	0 families
% families raising prawns	0%	0%	0%
Number prawn ponds	0 pond	0 pond	0 pond
Ponds per families	- pond/families	-pond/families	-pond/families
Number of prawn cages	0 cage	0 cage	0 cage
Cages per families	0 cage /families	0 cage /families	0 cage /families

Note: Percentage of families raising either prawns or shrimp is calculated against the number of families, who do aquaculture farming, NOT the total population.

2.5.39 Numbers of Families raising Shrimps and number of Shrimp Ponds, by Commune, in 2008

There were none of these in this District in 2008

2.5.40 Number of Families raising Prawn and Number of Prawn Ponds/Cages, by Commune, in 2008

There were none of these in this District in 2008

3 Social Aspects

3.1 Education

3.1.1 Kindergarten in the District over 3 years

Description	2006	2007	2008
Number of community kindergarten schools	11 school(s)	19 school(s)	21 school(s)
Number of community kindergarten class rooms	9 room(s)	20 room(s)	21 room(s)
Number of community kindergarten classes	10 class(es)	21 class(es)	23 class(es)
Number of community kindergarten teachers	11 person(s)	20 person(s)	27 person(s)
Number of women community kindergarten teachers	11 women	19 women	22 women
Number of state and private kindergarten schools	3 school(s)	8 school(s)	3 school(s)
Number of state and private kindergarten class rooms	4 room(s)	8 room(s)	7 room(s)
Number of state and private kindergarten classes	4 class(es)	8 class(es)	7 class(es)
Number of state and private kindergarten teachers	5 person(s)	8 person(s)	8 person(s)
Number of women state and private kindergarten teachers	5 women	8 women	7 women

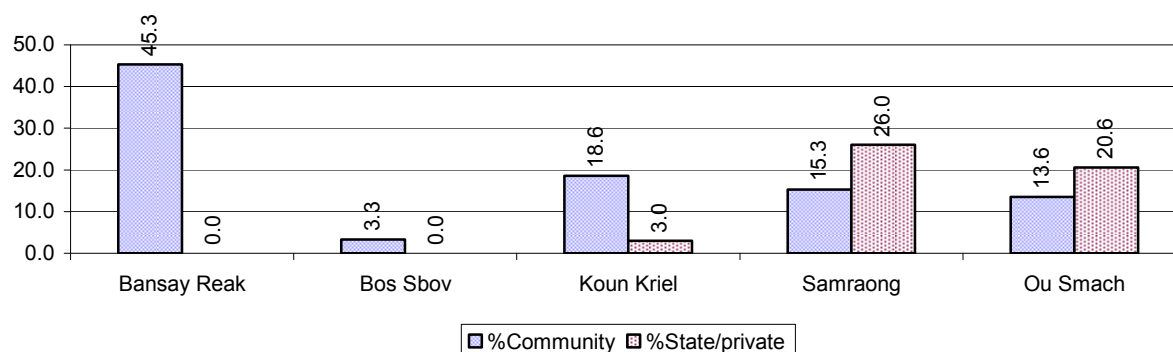
3.1.2 Percentage enrolment at Kindergarten level over 3 years

This table shows the percentage of the total 3-5 year old population attending kindergarten.

Description	2006 %	2007 %	2008	
			%	Number
Total percentage of children, 3-5 yrs, go to kindergarten	16%	17%	32%	1,683 person(s)
Percentage of children, 3-5 yrs, go community kindergarten	11%	10%	19%	1,012 person(s)
Percentage children, 3-5 yrs, go state/private kindergarten	4%	7%	13%	671 person(s)

Note: Calculated against the total for that age group

3.1.3 Percentage of Children 3-5 yrs attending Kindergarten, by Commune, in 2008



3.1.4 Basic Education over 3 years

Primary School

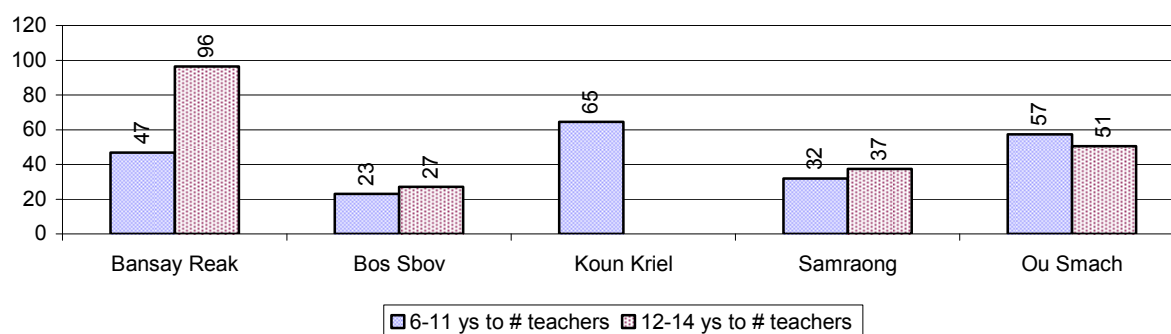
Description	2006	2007	2008
Number of primary schools	36 school(s)	61 school(s)	33 school(s)
Number of primary school rooms	171 room(s)	278 room(s)	182 room(s)
Number of primary classes	146 class(es)	317 class(es)	260 class(es)
Number of primary teachers	116 person(s)	189 person(s)	195 person(s)
Ratio of children 6-11 yrs to school	178	122	253
Ratio of children 6-11 yrs to school room	37	27	46
Ratio of children 6-11 yrs to class	44	23	32
Ratio of children 6-11 yrs to teacher	55	39	43

Note: According to education norm, children 6-11 yrs should attend primary school, while 12-14 yrs should be in lower secondary school, but in reality this varies.

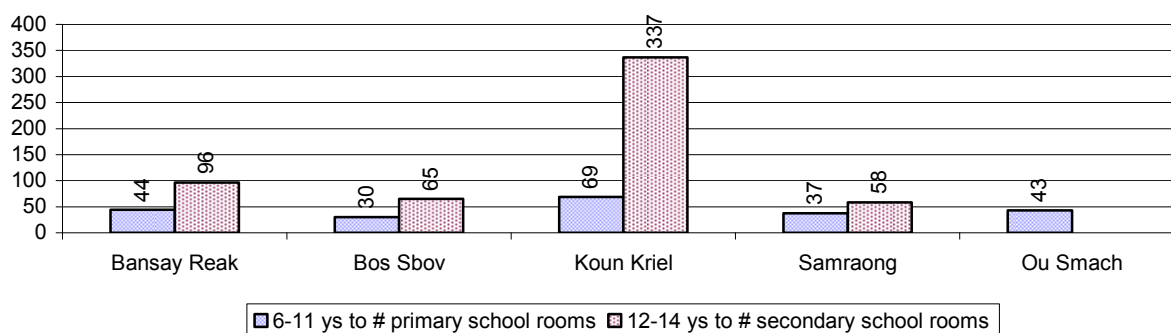
Lower Secondary School

Description	2006	2007	2008
Number of lower secondary schools	4 school(s)	10 school(s)	4 school(s)
Number of lower secondary school rooms	48 room(s)	47 room(s)	42 room(s)
Number of lower secondary classes	37 class(es)	69 class(es)	64 class(es)
Number of lower secondary teachers	56 person(s)	65 person(s)	71 person(s)
Ratio children 12-14 yrs to school	889	452	1,168
Ratio of children 12-14 yrs to school room	74	96	111
Ratio of children 12-14 yrs to class	96	65	73
Ratio of children 12-14 yrs to teacher	63	69	66

3.1.5 Ratio of 6-11 year old and 12-14 year old Children to number of Teachers, by Commune, in 2008



3.1.6 Ratio of 6-11 year old and 12-14 year old Children to number of School Rooms, by Commune, in 2008



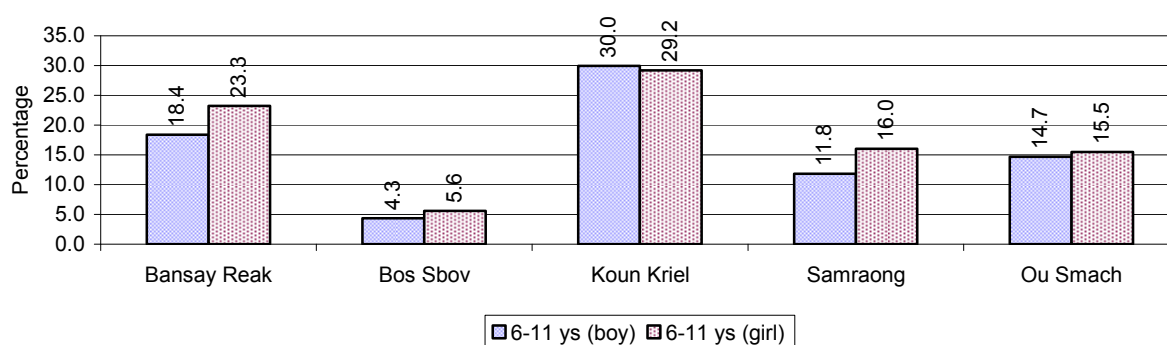
3.1.7 Enrolment status at Primary Level over 3 years

Description	2006 %	2007 %	2008	
			%	Number
Total children aged 6-11 years old	15%	14%	14%	8,340 person(s)
Total children aged 6-11 who are in school	69%	71%	80%	6,680 person(s)
Total children aged 6-11 who are not in school	31%	29%	20%	1,660 person(s)
Total girls aged 6-11 years old	15%	14%	14%	3,929 person(s)
Total girls aged 6-11 who are in school	69%	72%	80%	3,124 person(s)
Total girls aged 6-11 who are not in school	31%	28%	20%	805 person(s)
Total boys aged 6-11 years old	15%	15%	15%	4,411 person(s)
Total boys aged 6-11 who are in school	69%	71%	81%	3,556 person(s)
Total boys aged 6-11 who are not in school	31%	29%	19%	855 person(s)

Note 1: Percentage is calculated on the basis of the total number of children within 6-11 year age group for the first 3 rows and for the total girls and the total boys aged 6-11 yrs.

Note 2: Number of girls aged 6-11 who are in & not in school is calculated against the total number of girls aged 6-11 yrs. Number boys, 6-11 yrs who are in & not in school are calculated against the total number of boys aged 6-11 yrs.

3.1.8 Percentage of 6-11 year old Children not in School, by Commune, in 2008



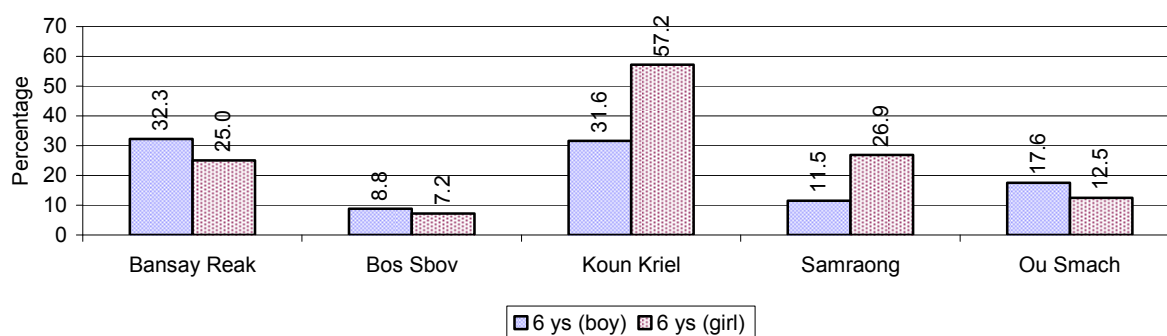
Note: calculated on the basis of the total number of children within 6-11 year age group in the commune.

3.1.9 Enrolment of 6 year old Children over 3 years

Description	2006 %	2007 %	2008	
			%	Number
Total % and number of children aged 6 years old	4%	4%	4%	2,216 person(s)
Total % of children aged 6 years old in school	67%	73%	77%	1,703 person(s)
Total % of children aged 6 years old not in school	33%	27%	23%	513 person(s)

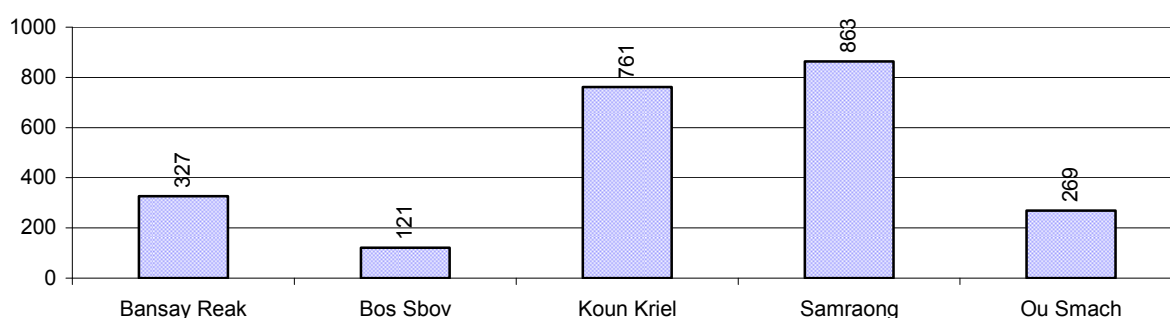
Note: First row calculated as a percentage of total population. Second and third row calculated as a percentage of the total number of 6 year olds.

3.1.10 Percentage of 6 year old Children not in School, by Commune, in 2008



Note: Calculated as a percentage of total 6 year old population

3.1.11 Number of 5 year old Children in each Commune in 2008

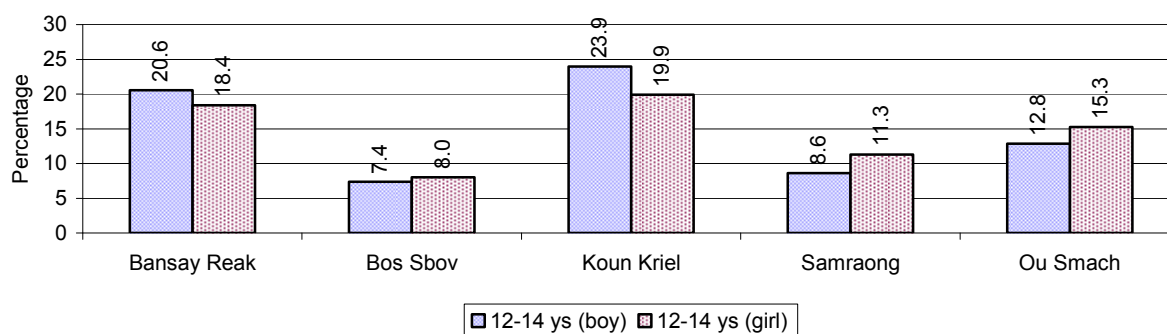


3.1.12 Enrolment at Lower Secondary Level over 3 years

Description	2006 %	2007 %	2008	
			%	Number
Total children aged 12-14 years old	8%	9%	8%	4,671 person(s)
Children aged 12-14 years old in school	71%	76%	84%	3,938 person(s)
Children aged 12-14 years old not in school	29%	24%	16%	733 person(s)
Total girls aged 12-14 years old	9%	9%	8%	2,219 person(s)
Girls aged 12-14 years old in school	67%	83%	85%	1,882 person(s)
Girls aged 12-14 years old not in school	33%	17%	15%	337 person(s)
Total boys aged 12-14 years old	8%	8%	8%	2,452 person(s)
Boys aged 12-14 years old in school	76%	69%	84%	2,056 person(s)
Boys aged 12-14 years old not in school	24%	31%	16%	396 person(s)

Note: Percentage is calculated on the basis of number of the total number of children within 12-14 yrs group, except for the first row of each section which is calculated on the basis of the total population.

3.1.13 Percentage of 12-14 year olds not in School, by Commune, in 2008



Note: Calculated as a percentage of the total 12-14 year old population in each commune

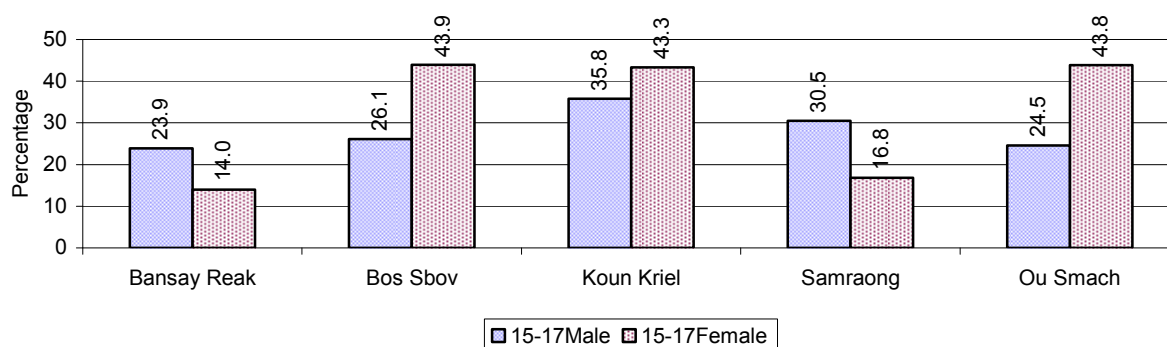
3.1.14 Upper Secondary Schools over 3 years

Description	2006	2007	2008
Number of upper secondary schools	4 school(s)	6 school(s)	1 school(s)
Number of upper secondary school rooms	20 room(s)	26 room(s)	25 room(s)
Number of upper secondary classes	20 class(es)	53 class(es)	18 class(es)
Number of upper secondary teachers	15 person(s)	13 person(s)	21 person(s)
Ratio of 15-17 yr olds to number of school	782	684	4,811
Ratio of 15-17 yr olds to number of school room	156	158	192
Ratio of 15-17 yr olds to number of classes	156	77	267
Ratio of 15-17 yr olds to number of teacher	209	316	229

3.1.15 Enrolment of 15-17 year old teenagers over 3 years

Description	2006	2007	2008
Number of teenage, 15-17 years old	3,128 person(s)	4,106 person(s)	4,811 person(s)
Number of teenage, 15-17 years old, who are not studying	1,197 person(s)	1,862 person(s)	1,473 person(s)
Percentage of teenage, 15-17 years old not studying	38%	45%	31%

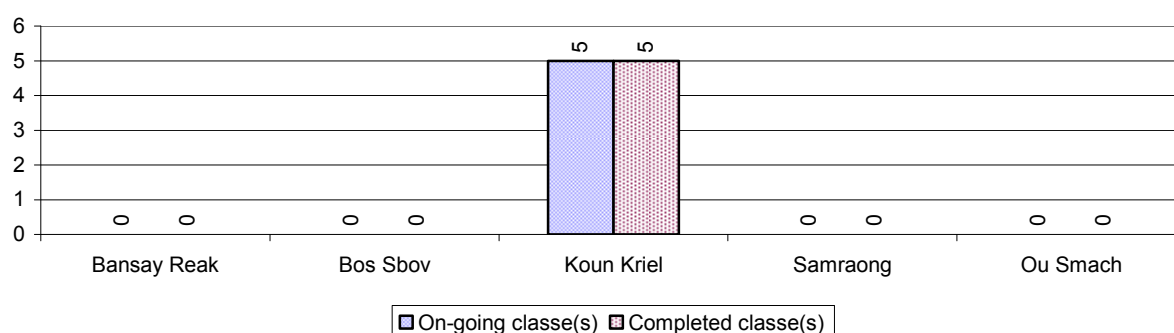
3.1.16 Percentage of 15-17 year old Teenagers not at School, by Commune, in 2008



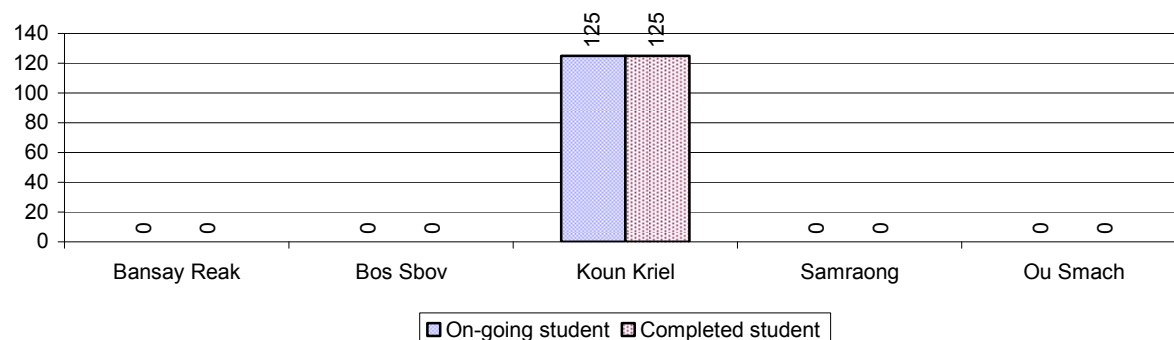
3.1.17 Literacy Classes as of 2008

Literacy classes	Organized by:		Other Program(s)	Total
	PDoEYS	NGOs		
Number of On-going literacy classes	5 class(es)	0 class(es)	0 class(es)	5 class(es)
Number of literacy students in on-going classes	125 person(s)	0 person(s)	0 person(s)	125 person(s)
Completed literacy class(es)	5 classes	0 classes	0 classes	5 classes
Number of literacy students that have completed literacy classes	125 person(s)	0 person(s)	0 person(s)	125 person(s)
Number of students that passed	5 person(s)	0 person(s)	0 person(s)	5 person(s)

3.1.18 Number of on-going and completed Literacy Classes, by Commune, in 2008



3.1.19 Students of on-going & completed Literacy Classes, by Commune, in 2008

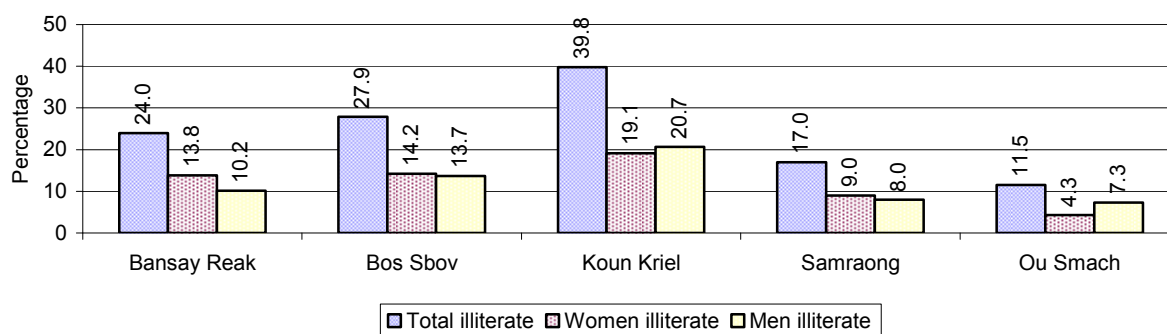


3.1.20 Percentage of illiterate People between 15-60, over 3 years

Illiteracy Status	2006	2007	2008	
	%	%	%	Number
Illiterate people, 15-60 years old	24%	23%	25%	8,785 person(s)
Illiterate females, 15-60 years old	13%	12%	12%	4,325 person(s)
Illiterate people, 15-17 years old	19%	17%	16%	789 person(s)
Illiterate females, 15-17 years old	10%	8%	8%	377 person(s)
Illiterate people, 18-24 years old	21%	19%	23%	1,965 person(s)
Illiterate females, 18-24 years old	13%	10%	11%	912 person(s)
Illiterate people, 25-60 years old	26%	25%	28%	6,031 person(s)
Illiterate females, 25-60 years old	14%	13%	14%	3,036 person(s)

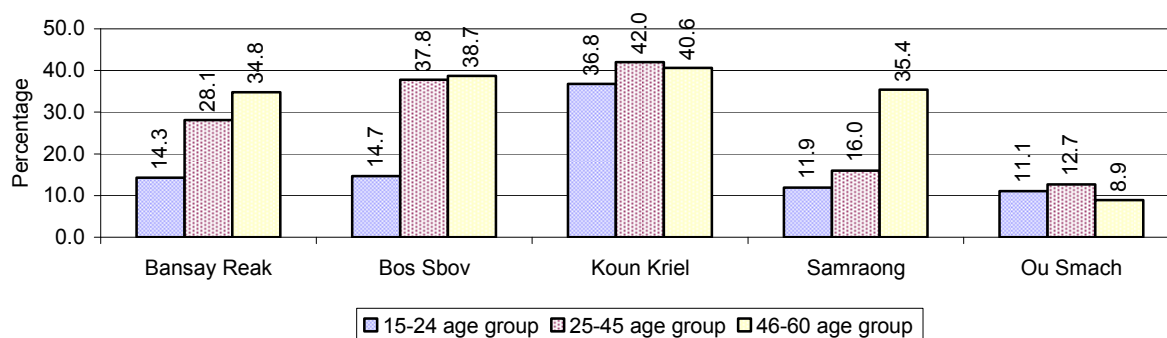
Note: Percentage is calculated on the basis of number of people in age each group.

3.1.21 Percentage illiterate People among 15-60 yrs old, by Commune, in 2008



Note: Percentages are calculated on the basis of number of people in that age group.

3.1.22 Percentage illiterate People for 15-24 yrs, 25-45 yrs and 46-60 yrs, by Commune, in 2008



Note: Percentage of illiterate people in each age group is calculated on the basis of number of people in that age group.

3.2 Health

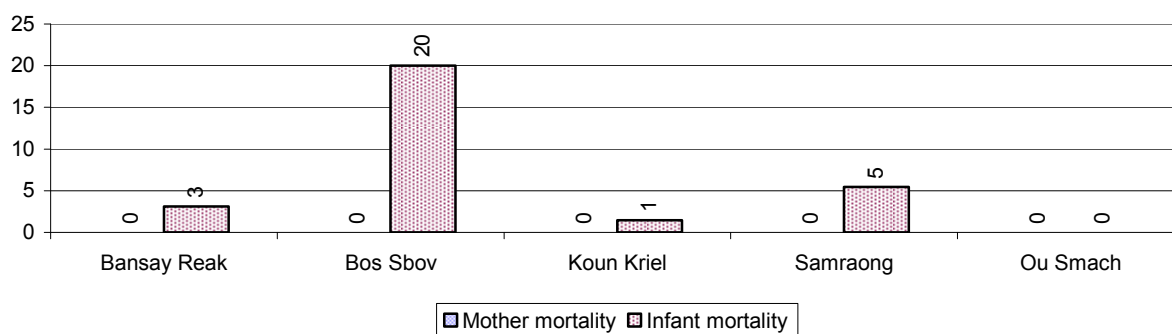
3.2.1 Health Situation of Women and Children, over 3 years

Description	2006	2007	2008
Number families with a birth during the year	590 families	891 families	1,029 families
Number of women who had their baby delivered by a TBA	349 person(s)	331 person(s)	422 person(s)
Percentage of women who had their baby delivered by a TBA	59 %	37 %	41 %
Number of women who had their baby delivered by a midwife	241 person(s)	560 person(s)	607 person(s)
Percentage of women had their baby delivered by a midwife	41 %	63 %	59 %
Number of mothers who died within 1 month of giving birth	7 person(s)	13 person(s)	0 person(s)
Mothers who died within 1 month of giving birth per 100,000 families having a delivery	1,186	1,459	0
Number of infants born during the year	593 person(s)	892 person(s)	1,029 person(s)
Number of Infants who died within 1 month	31 person(s)	32 person(s)	12 person(s)

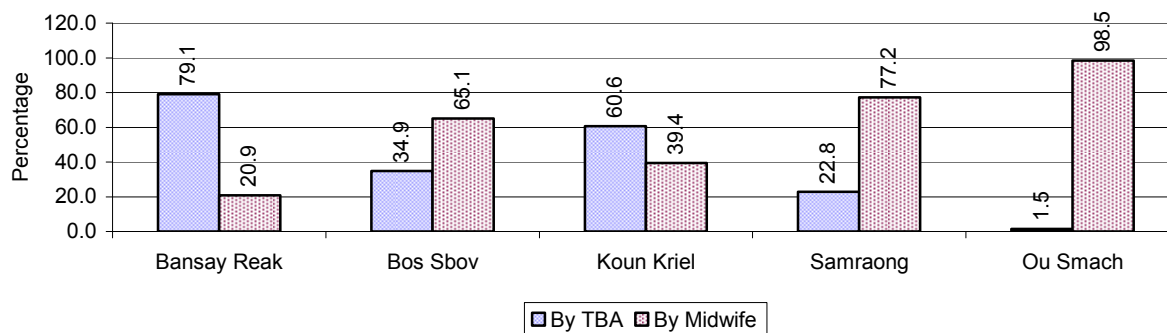
Description	2006	2007	2008
Infants mortality within 1 month per 1,000 births	52	36	12
Number of children who died below the age of 5.	26 person(s)	32 person(s)	26 person(s)
Number of infants, aged 9-12 months, born during the year	325 person(s)	515 person(s)	417 person(s)
Nr. infants, aged 9-12 months, not receiving full immunization	27 person(s)	63 person(s)	74 person(s)
% of 9-12 months infants, not receiving full immunization	8 %	12 %	18 %

Note: TBA = Traditional Birth Attendant

3.2.2 Mothers dying within 0 days to 1 month of giving Birth and Infants dying within 1 month in 2008, by Commune

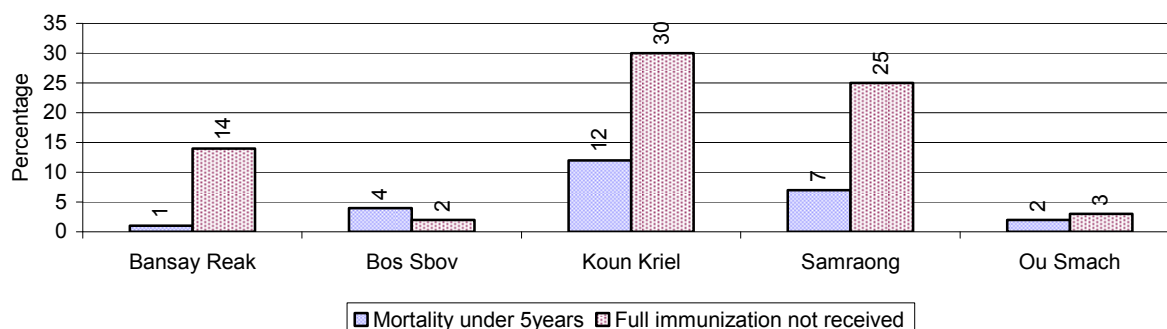


3.2.3 Percentage of Women delivering with a TBA or Midwife, by Commune



Note: Calculated as a percentage of total deliveries

3.2.4 Percentage of Children dying below 5 & of 9-12 months not receiving full Immunization, by Commune, in 2008



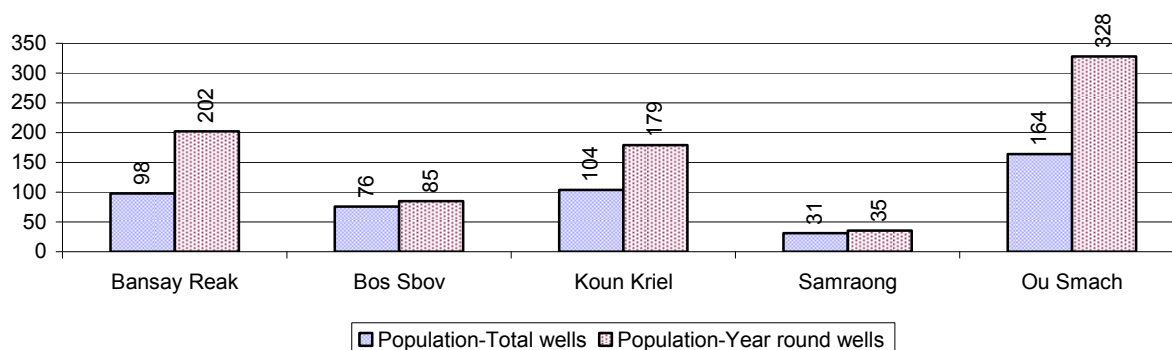
Note: Mortality rate calculated as a percentage of the total 5 year old population. Lack of immunization received calculated as a percentage of the total number 9-12 months olds there are

3.3 Water and Sanitation

3.3.1 Number of different types of Wells over 3 years

Type of wells	Number of wells by year		
	2006	2007	2008
<i>Total number of pumped or mixed wells</i>	514	583	786
Year-round usable pumped or mixed wells	438	519	666
Dry season unusable pump or mixed wells	76	64	120
Pump or mixed wells needing repair/rehabilitation	111	83	130
<i>Total number of ring wells</i>	169	147	189
Year-round usable ring wells	75	77	87
Dry season unusable ring wells	94	70	102
Ring wells needing repair/rehabilitation	85	63	71
<i>Total number of unprotected dug wells</i>	113	104	281
Year-round usable unprotected dug wells	26	24	50
Dry season unusable unprotected dug wells	87	80	231

3.3.2 Ratio of People to Wells, by Commune, in 2008

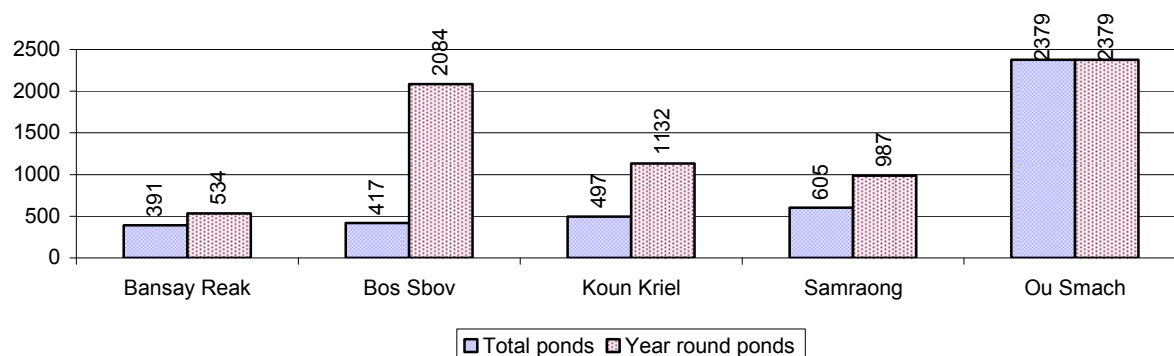


Note: Year-round wells excluding unprotected wells

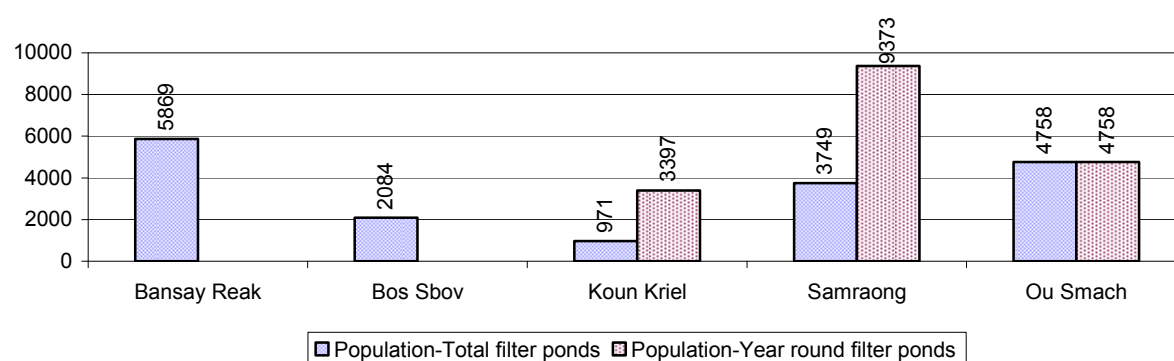
3.3.3 Potable Ponds over 3 years

Type of Pond	2006	2007	2008
<i>Total number of normal-type ponds</i>	107 pond	112 pond	101 pond
Year-round usable normal-type ponds	42 pond	55 pond	54 pond
Dry season unusable normal-type ponds	65 pond	57 pond	47 pond
Normal-type ponds needing repair/rehabilitation	44 pond	62 pond	58 pond
<i>Total number of filter ponds</i>	37 pond	23 pond	31 pond
Year-round usable filter ponds	18 pond	6 pond	10 pond
Filter ponds, dry season unusable	19 pond	17 pond	21 pond
Filter ponds needing repair/rehabilitate	25 pond	27 pond	23 pond

3.3.4 Ratio of People to normal Ponds, by Commune in 2008



3.3.5 Ratio of People to Filter Ponds, by Commune, in 2008

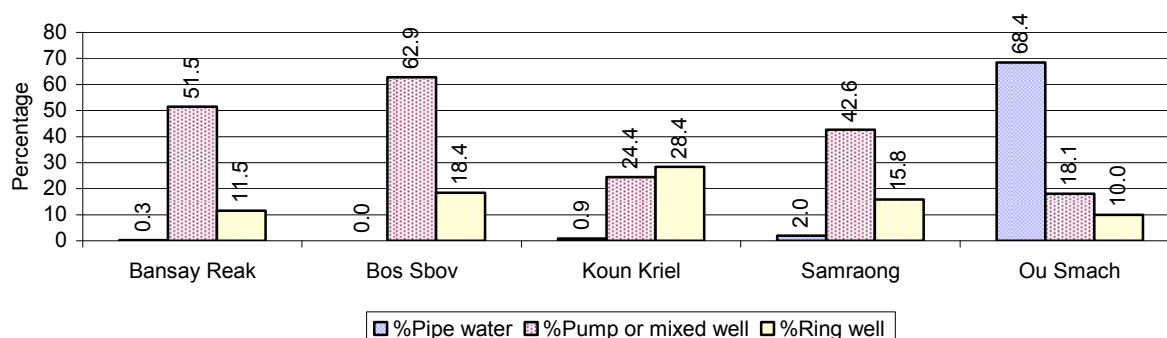


3.3.6 Source of potable Water for Households, over 3 years

Water sources	2006	2007	2008	
	%	%	%	Number
Families using water from purification system	10%	11 %	12 %	1,407 families
Families using water from pump, mixed wells	41%	32 %	34 %	4,080 families
Families using water from ring wells and open dug wells	24%	16 %	19 %	2,319 families
Families using water from pond	15%	25 %	25 %	2,966 families
Families using water from rain water storage	2%	1 %	4 %	489 families
Families using water from rivers, lakes, natural ponds and reservoirs	9%	15 %	6 %	658 families

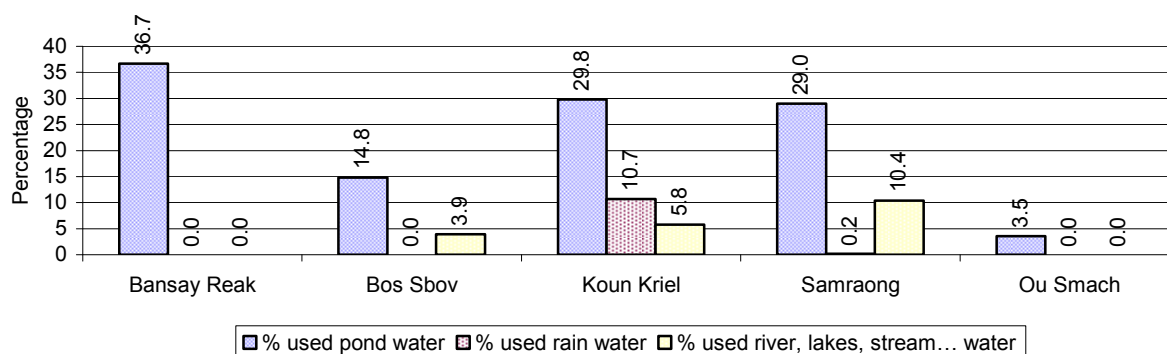
Note: Calculated as a percentage of the total number of families.

3.3.7 Percentage Families using different Water Sources, by Commune, in 2008



Note: Calculated as a percentage of the total number of families in each commune

3.3.8 Percentage Families using Water from Rain Water Storage, Ponds and natural Sources (rivers/lakes/natural ponds/reservoirs), by Commune, 2008



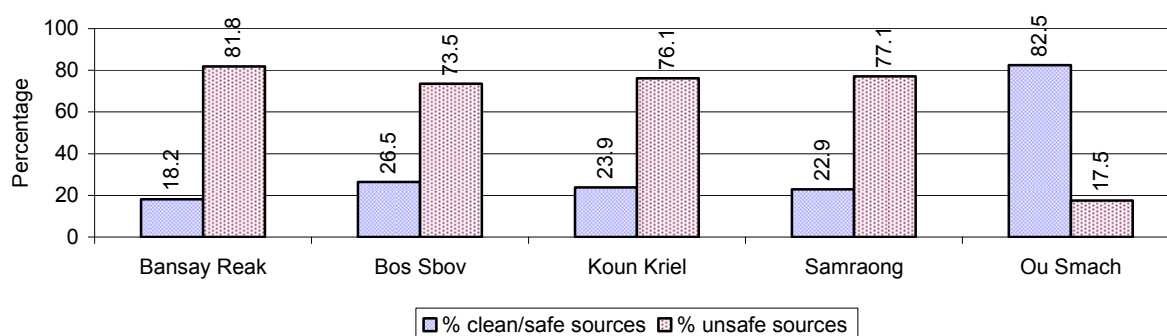
Note: Calculated as a percentage of the total number of families in each commune

3.3.9 Drinking Water Sources in the dry Season over 3 years

Percentage Families that get drinking water from:	2006	2007	2008	
	%	%	%	Number
from clean/safe sources	54 %	42 %	33 %	3,879 families
from unsafe sources	46 %	58 %	67 %	8,040 families

Note: Calculated as a percentage of the total number of families.

3.3.10 Percentage Families using safe and unsafe Water Sources in the dry Season, by Commune, in 2008



Note: Calculated as a percentage of the total number of families in each commune.

3.3.11 Drinking Water Purification by Households, over 3 years

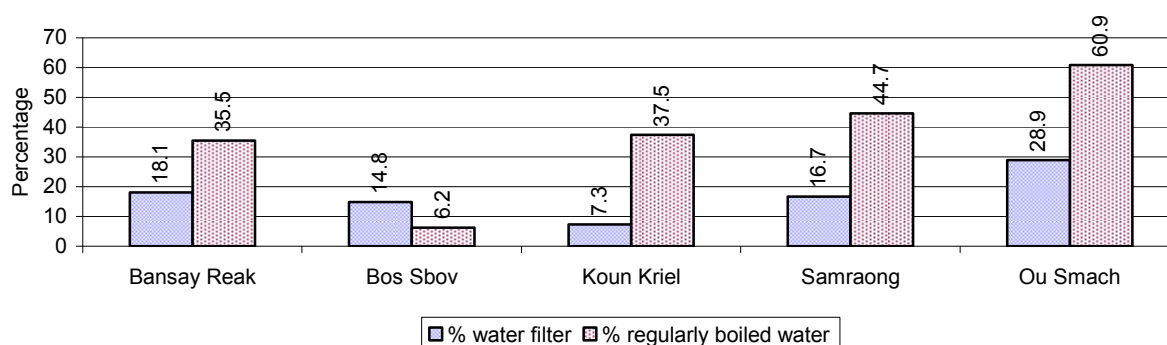
This table shows the different ways families make water safe for drinking.

Families, who:	2006 %	2007 %	2008	
			%	Number
Filter water for drinking	9%	15%	15 %	1,793 families
Boil water for drinking	32%	30%	41 %	4,852 families

Note: Calculated as a percentage of the total number of families

3.3.12 Percentage Families filtering Water or regularly boiling Water, by Commune, in 2008

This graph shows the different ways families make drinking water safe.



Note: Calculated on as a percentage of the total number of families in each commune.

3.3.13 Families' access to Water, over 3 years

Families access to water	2006 %	2007 %	2008	
			%	Number
Families with water at home or in less then 150m	58%	22%	15 %	1,824 families
Families with water 150m or more away from home	21%	9%	7 %	892 families

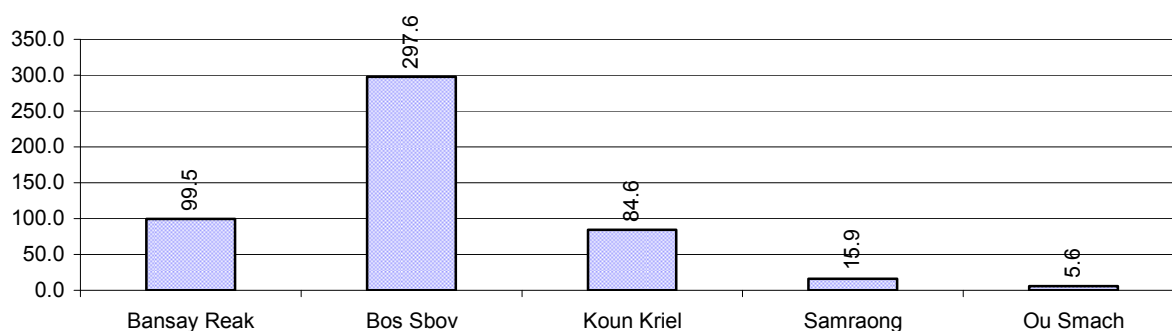
Note: Calculated as a percentage of the total number of families

3.3.14 Ratio of people to Latrines over 3 years

Description	2006 Ratio	2007 Ratio	2008	
			Ratio	Number
Ratio of people to latrines	19.5	19.3	18.4	3,194.0

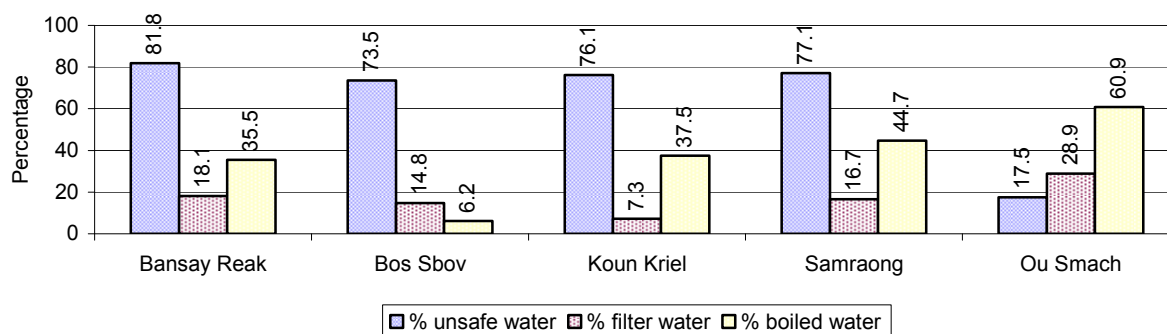
Note: Ratio calculated by dividing the number of houses with latrines by the total population

3.3.15 Ratio of People to Latrines, by Commune, in 2008



Note: Ratio calculated by dividing the number of houses with latrines by the total population in a Commune.

3.3.16 Percentage of Families drinking boiled, filtered or unsafe Water, by Commune, in 2008



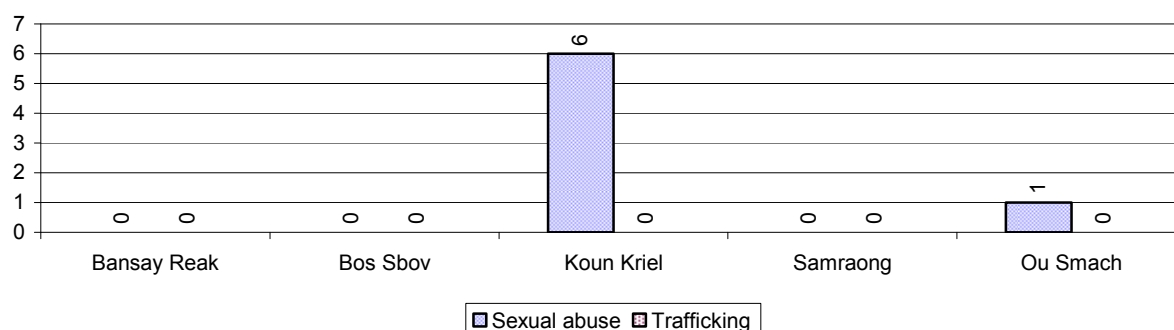
Note: Calculated as a percentage of the total number of families in each commune.

3.4 Vulnerable groups

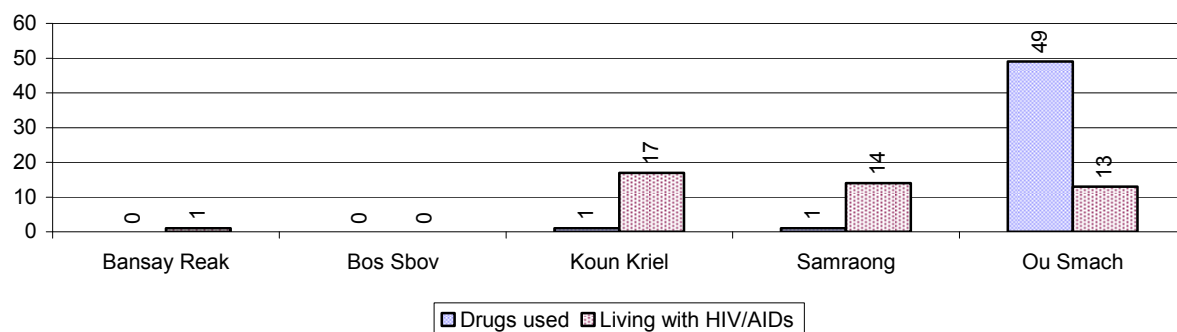
3.4.1 Vulnerable Groups in need of special Protection over 3 years

Vulnerable groups	2006	2007	2008
Victims of sexual abuse	2 person(s)	2 person(s)	7 person(s)
Victims of human trafficking	0 person(s)	13 person(s)	0 person(s)
Families with family member(s) using drugs	54 families	120 families	51 families
Families with family member(s) living with HIV/AIDS	23 families	42 families	45 families
Children under 18 yrs old whose parent died of AIDS	25 person(s)	15 person(s)	34 person(s)
Orphaned/abandoned children under 18 yrs old (all cases)	504 person(s)	578 person(s)	801 person(s)
Elderly persons without guardian	127 person(s)	79 person(s)	102 person(s)
Disabled people able to earn an income	80 person(s)	83 person(s)	133 person(s)
Disabled people unable to earn an income	71 person(s)	70 person(s)	74 person(s)
Disabled people under 18 yrs old	20 person(s)	28 person(s)	22 person(s)
Victims of natural disasters	360 families	2,035 families	990 families
Victims of land mines and unexploded weapons	47 person(s)	43 person(s)	55 person(s)

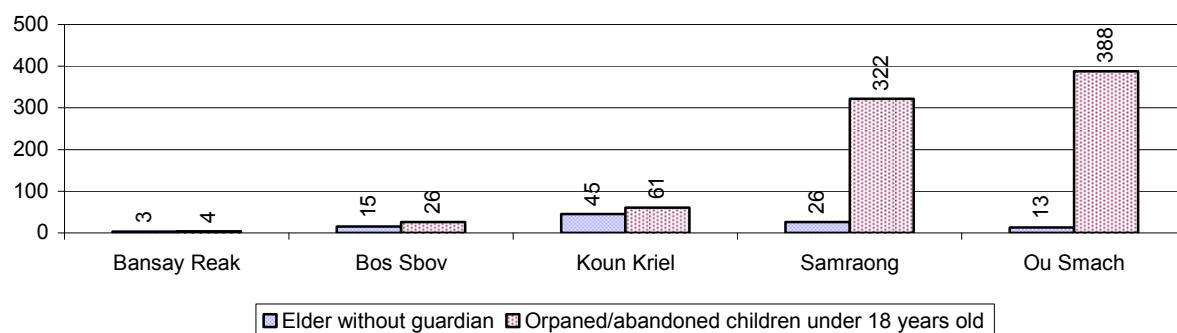
3.4.2 Registered Victims of sexual Abuse or Trafficking, by Commune, for 2008



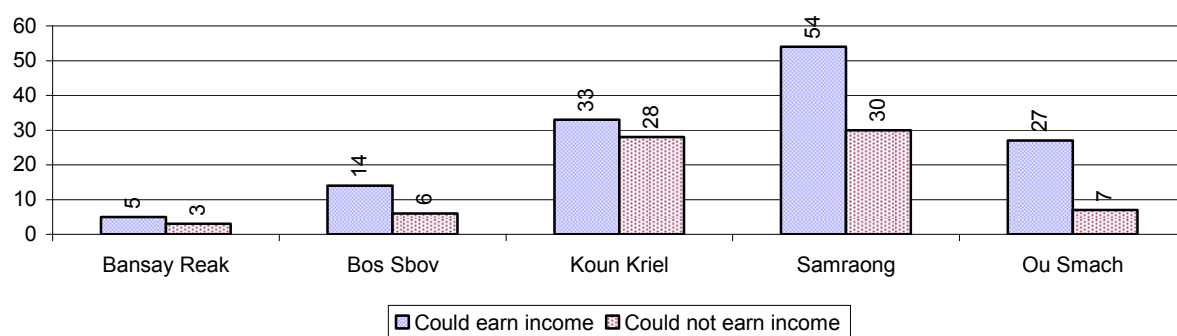
3.4.3 Registered Families with Member(s) using Drugs or living with HIV/AIDS, by Commune, for 2008



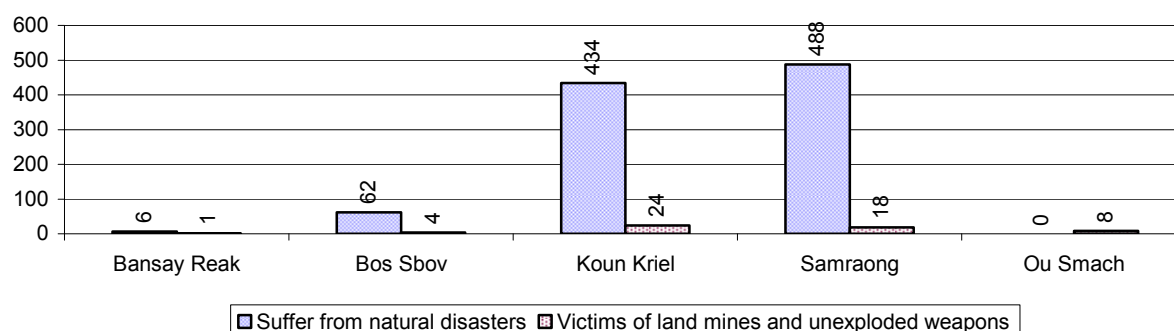
3.4.4 Elderly Persons without a Guardian and orphaned/abandoned Children under 18 years old, by Commune, for 2008



3.4.5 Number of disabled People who could or could not earn an Income, by Commune, for 2008



3.4.6 Number of Families who suffered from natural Disasters, and number of Victims of Land Mines and unexploded Weapons, by Commune, in 2008



3.5 Migration

3.5.1 Migration over 3 years

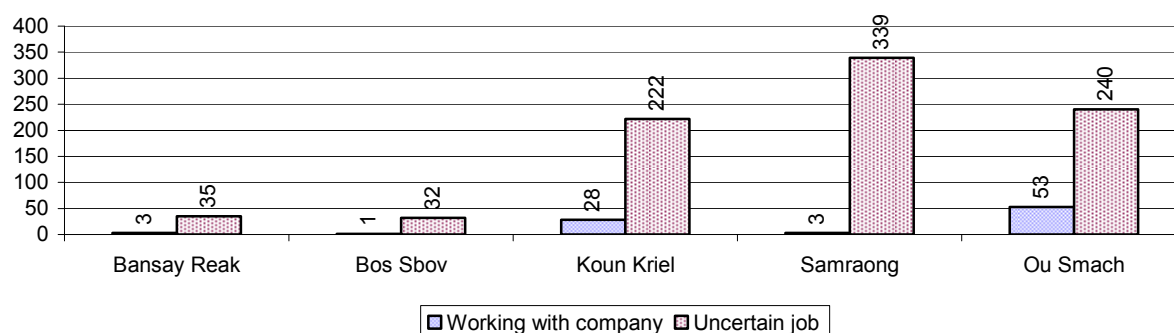
Description	2006	2007	2008
Number of families permanently in-migrated	222 families	641 families	1,205 families
Total number of people	625 person(s)	2,351 person(s)	4,169 person(s)
Total number of female	325 person(s)	1,088 person(s)	2,108 person(s)
Number of families permanently out-migrated	136 families	96 families	258 families
Total number of people	406 person(s)	355 person(s)	853 person(s)
Total number of female	187 person(s)	180 person(s)	431 person(s)
Number of families staying temporarily	142 families	95 families	430 families
Total number of people	290 person(s)	275 person(s)	830 person(s)
Total number of female	176 person(s)	123 person(s)	518 person(s)

3.5.2 Job Migration

Description	2006	2007	2008
Number of people migrated to work with company/factory	0%	0%	0%
Number of people migrated to work, but have uncertain jobs	3%	5%	3%

Note: Calculated as a percentage of the total population of 18-60 year olds

3.5.3 Number of People working outside their home Villages in a Company/Factory or with an uncertain Job in 2008

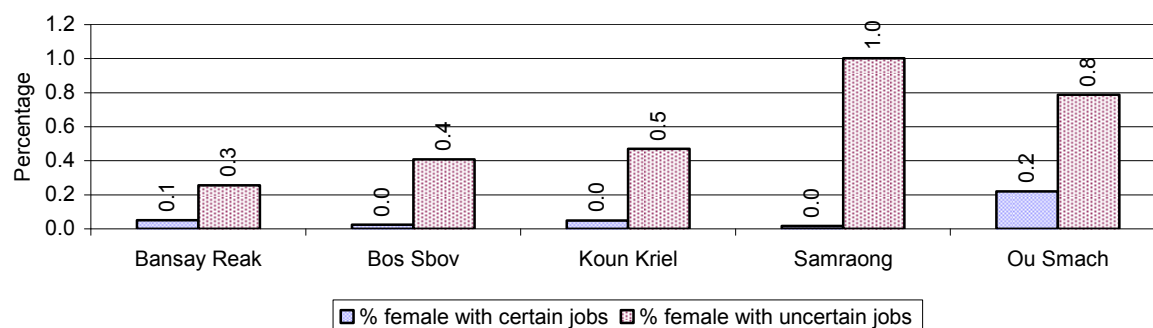


3.5.4 Female migration over 3 years

Description	2006 %	2007 %	2008	
			%	Number
Total number of migrants	1.7%	2.6%	1.6%	956 person(s)
Number of female migrants	0.7%	1.4%	0.7%	429 person(s)
Total number of migrants, who go to work with company/factory (with certain jobs)	0.1%	0.2%	0.1%	88 person(s)
Number of female migrants with certain jobs	0.1%	0.1%	0.1%	38 person(s)
Total number of migrants with uncertain jobs	1.6%	2.4%	1.5%	868 person(s)
Number of female migrants with uncertain jobs	0.7%	1.2%	0.7%	391 person(s)

Note: Calculated as a percentage of the total population

3.5.5 Percentage female Migrants with certain and uncertain Jobs, by Commune, in 2008



Note: Calculated as a percentage of the total population of the commune

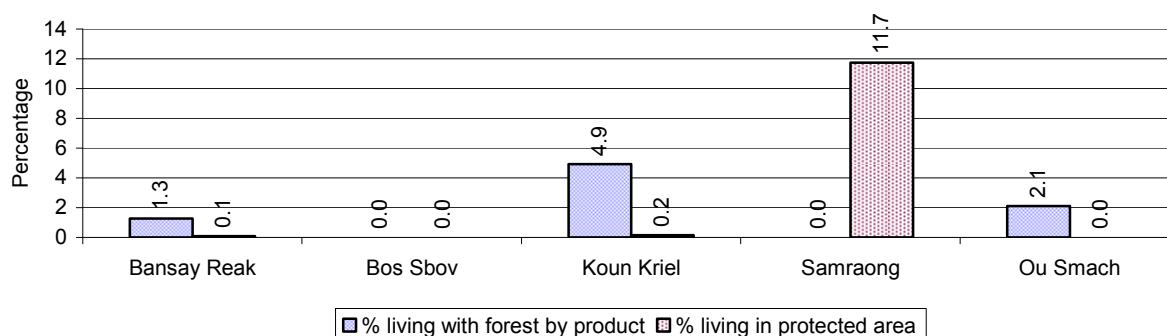
4 Natural Resources and Environment (NRE)

4.1 Families involved with NRE issues over 3 years

Description	2006 %	2007 %	2008	
			%	Number
Families living with forest by products	1 %	1 %	2 %	276 families
Families living in a protected area	2 %	3 %	4 %	418 families
Houses with access to garbage collection service	1 %	6 %	1 %	80 families
Families affected by environmental pollution	2 %	2 %	1 %	65 families
Families using chemical fertilizer	35 %	38 %	35 %	4,184 families
Families using chemical pesticide	6 %	10 %	8 %	928 families

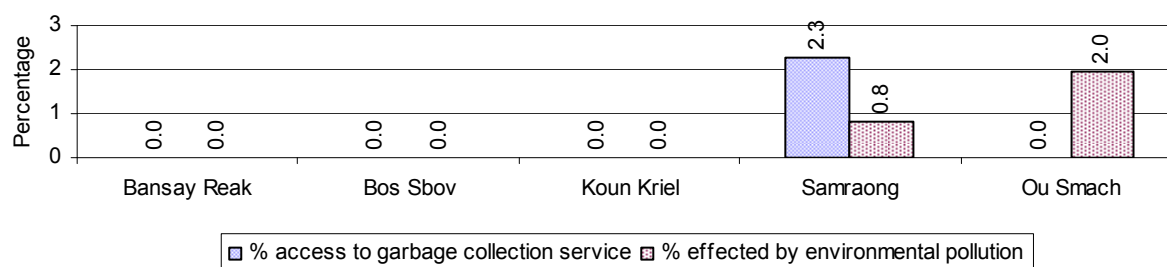
Note: Calculated as a percentage of the total number of families

4.2 Percentage of Families involved with Natural Resource issues, by Commune, for 2008



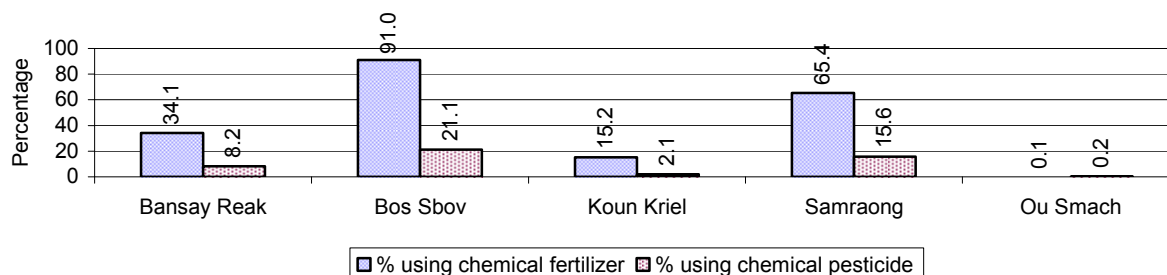
Note: Calculated as a percentage of the number of families in each commune

4.3 Percentage Houses with access to Garbage collection and Families affected by environmental Pollution, by Commune, for 2008



Note: Garbage collection is calculated as a percentage of the total number of houses in each commune and families affected by environmental pollution is calculated as a percentage of the total number of families in each commune.

4.4 Percentage Families using chemical Fertilizer and chemical Pesticides, by Commune, for 2008



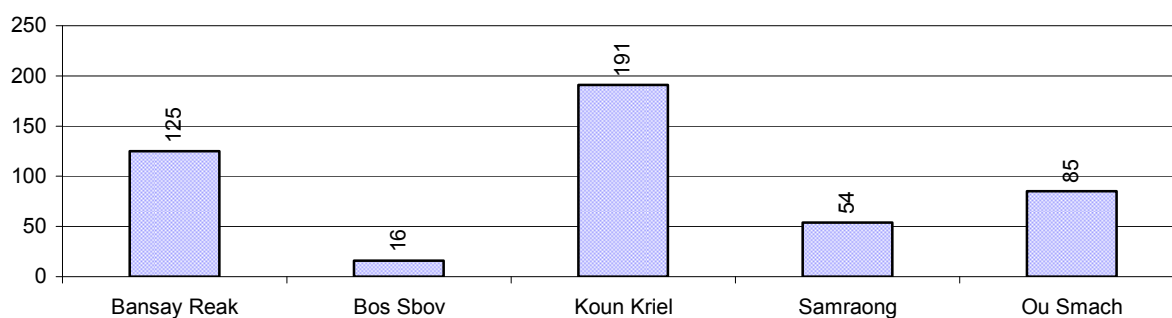
Note: Calculated as a percentage of the total number of families in each commune

5 Administration and Security

5.1 Birth Registration across 3 years

Description	2006	2007	2008
Number of infants to be registered	562 person(s)	860 person(s)	1,017 person(s)
Number of unregistered infants the year	313 person(s)	627 person(s)	471 person(s)
Percentage of infants unregistered	56 %	73 %	46 %

5.2 Number of unregistered Infants born in 2008, by Commune

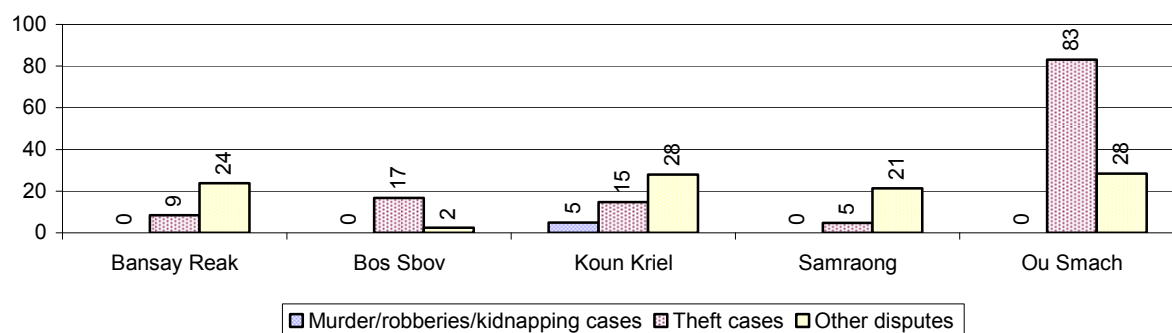


5.3 Registered criminal Cases over 3 years

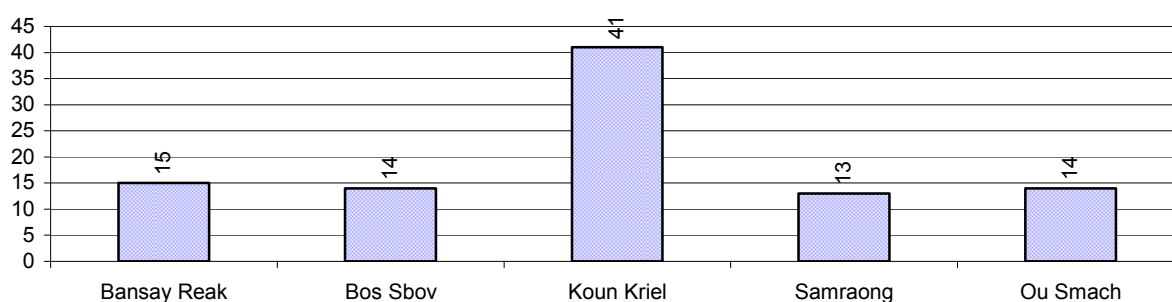
Description	2006	2007	2008
Murders, robberies and kidnapping cases	33 case(s)	1 case(s)	10 case(s)
Theft cases	120 case(s)	111 case(s)	130 case(s)
land dispute cases	225 case(s)	161 case(s)	97 case(s)
Other disputes cases	178 case(s)	173 case(s)	139 case(s)

Note: this reflects only registered criminal cases

5.4 Registered criminal Cases per 10,000 people, by Commune, for 2008



5.5 Number of registered Land Disputes, by Commune, in 2008

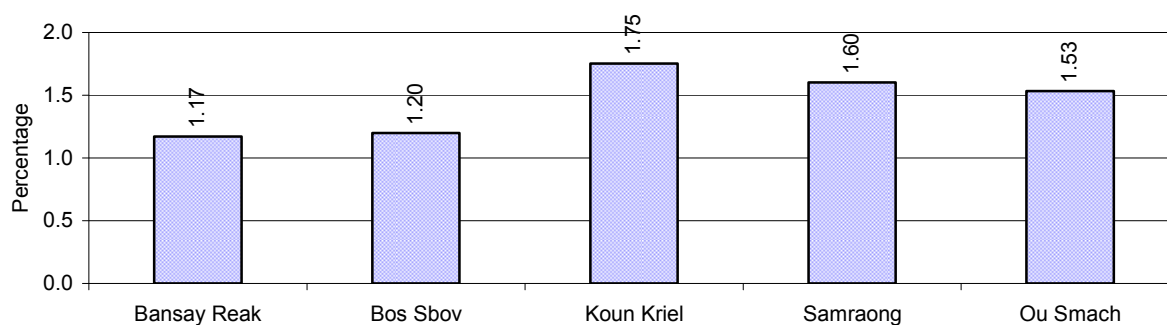


6 Gender

6.1 Registered Domestic Violence over 3 years

Description		2006	2007	2008
Families experiencing domestic violence		314 families	198 families	188 families(s)
% families experiencing domestic violence		4 %	2 %	2 %
Domestic violence cases reported by village chiefs		56 case(s)	228 case(s)	102 case(s)
Type	Physical violence	25 case(s)	208 case(s)	78 case(s)
	Sexual violence	4 case(s)	0 case(s)	1 case(s)
	Mental violence	20 case(s)	18 case(s)	13 case(s)
	Household economic violence	7 case(s)	2 case(s)	10 case(s)
Number of administrative decisions on domestic violence		0 case(s)	206 case(s)	98 case(s)
% of administrative decisions on domestic violence		0 %	90 %	96 %

6.2 Percentage of registered cases of Families experiencing domestic Violence, by Commune, in 2008



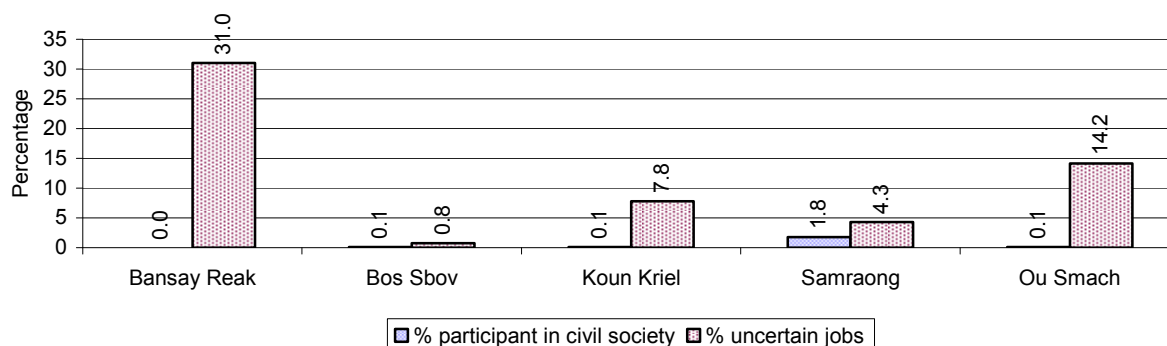
Note: Calculated as a percentage of the total number of families in each commune

6.3 Women's involvement over 3 years

Description	2006 %	2007 %	2008	
			%	Number
People participating in civil society	1%	2%	2%	906 person(s)
Women participating in civil society	0%	1%	1%	370 person(s)
People, 18-60 yrs, with uncertain/irregular jobs	11%	15%	17%	5,160 person(s)
Women, 18-60 yrs, with uncertain/irregular jobs	6%	6%	9%	2,837 person(s)

Note: Participation can be in NGOs, CBOs, credit groups, women's unions, parties and other civil society organizations. The first section is calculated as a percentage of the total population. The second section is calculated as a percentage of the total 18-60 year old population.

6.4 Percentage of Female Participants in Civil Society and of 18-60 year women with uncertain Jobs, by Commune, in 2008



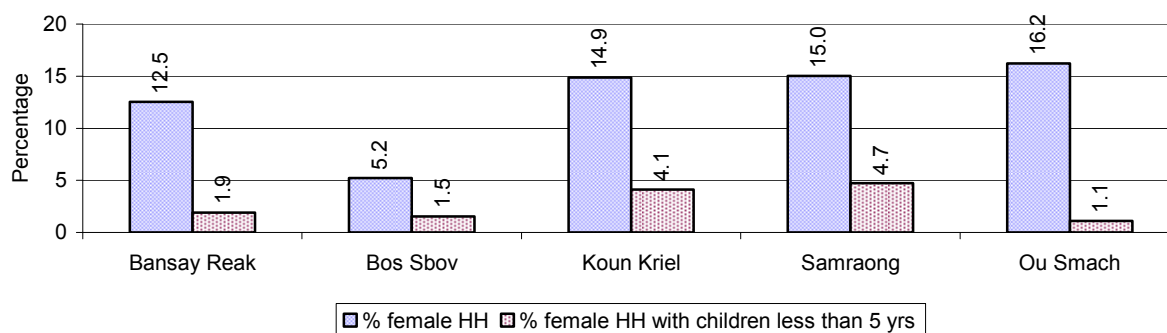
Note: Percentage of female participants in civil society is calculated as a percentage of the total population per commune. The percentage of 18-60 years old women with uncertain jobs is calculated as a percentage of the total 18-60 year old population per commune.

6.5 Female-headed Households over 3 years

Families with:	2006 %	2007 %	2008	
			%	Number
Households in which a woman is the family head	20%	17%	14%	1,689 families
Households in which a woman is the family head with children of less than 5 yrs	9%	7%	3%	406 families

Note: Calculated as a percentage of the total number of families

6.6 Percentage female-headed Households and with Children of less than 5 years old, by Commune, in 2008



Note: Calculated as a percentage of the total number of families in each commune
HH: Headed Household

7 Indigenous People in the District

7.1 Ethnic Minorities in the District over 3 years

Race of indigenous	2006		2007		2008	
	# families	# population	# families	# population	# families	# population
Phnong	2 families	13 person(s)	2 families	19 person(s)	3 families	24 person(s)
Kouy	68 families	373 person(s)	113 families	623 person(s)	81 families	468 person(s)
Stieng	0 families	0 person(s)	0 families	0 person(s)	0 families	0 person(s)
Mil	0 families	0 person(s)	0 families	0 person(s)	0 families	0 person(s)
Kroal	0 families	0 person(s)	0 families	0 person(s)	0 families	0 person(s)
Thmorn	0 families	0 person(s)	0 families	0 person(s)	0 families	0 person(s)
Khaonh	0 families	0 person(s)	0 families	0 person(s)	0 families	0 person(s)
Tompson	0 families	0 person(s)	0 families	0 person(s)	0 families	0 person(s)
Charay	0 families	0 person(s)	0 families	0 person(s)	0 families	0 person(s)
Kroeung	0 families	0 person(s)	0 families	0 person(s)	0 families	0 person(s)
Kavet	0 families	0 person(s)	0 families	0 person(s)	0 families	0 person(s)
Saouch	0 families	0 person(s)	0 families	0 person(s)	0 families	0 person(s)
Lun	0 families	0 person(s)	0 families	0 person(s)	0 families	0 person(s)
Kachak	0 families	0 person(s)	0 families	0 person(s)	0 families	0 person(s)
Praov	0 families	0 person(s)	0 families	0 person(s)	0 families	0 person(s)
Others	0 families	0 person(s)	0 families	0 person(s)	0 families	0 person(s)
Total	70 families	373 person(s)	115 families	623 person(s)	84 families	468 person(s)

Note: "Others" refer to other ethnic groups which are not listed.

7.2 Other Minorities in the District over 3 years

Minority	2006		2007		2008	
	# families	# population	# families	# population	# families	# population
Khmer Islamic	5 families	24 person(s)	4 families	27 person(s)	9 families	45 person(s)
Vietnamese	14 families	39 person(s)	15 families	82 person(s)	20 families	81 person(s)
Laos	5 families	8 person(s)	2 families	2 person(s)	1 families	4 person(s)

Note: Number of indigenous and minority population are additional data, so some village may not recorded.

SECTION C: PLANS AND PROJECTS

8 Priorities and Plans

8.1 Priorities of Commune Councils for 2009 in the District by Sector

The District Priority Activity Matrix (DPAM) data are taken from the CDPD. The DPAM is used for the District Integration Workshop (DIW), to show what kind of projects the commune has proposed in their Commune Investment Plan (CIP) for 2009. Donors, departments and other agencies then consider which projects they want to support and which projects they are not interested in. This results in Temporary Agreements between the Commune Council and the Supporter (NGO, Department, private donor, etc), as shown in table 8.2

No.	Project Name	Bansay Reak	Bos Sbov	Koun Kriel	Samraong	Ou Smach	Req.Project
		220401	220402	220403	220404	220405	Total
Economic							
1	Compost fertilizer training	12 training	4 training		19 training		3
2	Chemical and pesticide application training	12 training	4 training	15 training	16 training		5
3	Rice cultivation technique training		2 training	17 training			2
4	Animal vaccination request	527 Head		1500 Head	2219 Head		3
5	Village veterinary training	6 person	3 person		16 person		3
6	Animal raising training			17 training	16 training	6 training	3
7	Pig raising training		4 training				1
8	Rice seed request			20 T	23 T		2
9	Fruit trees seedling request		3000 Tree			19500 Tree	2
10	Calf for raising request			180 Head			1
11	Sow for raising request			265 Head			1
12	Vegetable seeds request			65 package			1
13	Family fish pond construction			24 Pond	7 Pond		2
14	Fish raising training				9 training		1
15	Fish fingerling request				12200 fingerling	23000 fingerling	2
16	Earth road construction	17950 m	22100 m	67430 m	18200 m	9570 m	6
17	Laterite/natural gravel road construction	18870 m		30346 m	1696 m		3
18	Culvert construction	17 place	15 place	147 place	76 place	33 place	6
19	Bridger construction	3 place	3 place	20 place	5 place	11 place	5
20	Bridger repairing					5 place	1
21	Irrigation system construction/renovation	5000 m					1
22	Weir construction/repair			1 place			1
23	Irrigation pond construction/rehabilitation	8 place			5 place		2
24	Canal construction			1100 m	12000 m		2

District Data Book 2009: Development Plans and Projects

No.	Project Name	Bansay Reak	Bos Sbov	Koun Kriel	Samraong	Ou Smach	Req.Project
		220401	220402	220403	220404	220405	Total
25	Dam construction	500 m	450 m	6240 m	2500 m		4
26	Spillway construction	5 place					1
27	Irrigation pond construction			16 place			1
28	Canal repairing				5500 m		1
29	Dam repairing		560 m	1820 m	700 m		3
30	Irrigation pond repairing	1 place		5 place			2
31	Rice seed bank	4 T					1
32	Cow bank					50 Head	1
33	Fish fingerling credit			10700 Head			1
34	Market place creation/construction	1 place					1
Social							
1	Family planning			12 time			1
2	Reproductive health awareness education					4 training	1
3	Antenatal care service accessibility improvement			12 time	16 time		2
4	Health/hygiene education for local people	12 training		15 training	4 training	6 training	4
5	Women and children health care education			12 time			1
6	Vitamin A provision campaign			15 time			1
7	Children and women vaccination			15 time		6 time	2
8	Health center committee strengthening					12 Month	1
9	TBA training			2 training			1
10	Mosquito nets distribution/treatment		943 mosqui-net	500 mosqui-net	3831 mosqui-net	1561 mosqui-net	5
11	Health support committee meeting					12 Month	1
12	Health post construction/renovation			2 place			1
13	Maternal health care education	6 training		15 training		4 training	3
14	Latrine construction	12 toilet	920 toilet				2
15	Sanitation education		4 training				1
16	Commune health center construction	1 place					1
17	Pump wells construction	9 well	19 well	58 well	51 well		4
18	Ponds construction		6 place	10 place			2
19	Pump wells repairing	12 well		49 well	22 well		3
20	Ponds repairing			6 place			1
21	Literacy class	5 class	8 class		6 class		3
22	Literacy teacher support	5 person			6 person		2

District Data Book 2009: Development Plans and Projects

No.	Project Name	Bansay Reak	Bos Sbov	Koun Kriel	Samraong	Ou Smach	Req.Project
		220401	220402	220403	220404	220405	Total
23	School building		3 building			1 building	2
24	Primary school creation/construction			9 building			1
25	Kindergarten school construction/repair	4 class	8 class	16 class			3
26	Pre-school teacher/kid keeper support	4 person		14 person	9 person		3
27	Kid center nurse training		8 person				1
28	Kindergarten equipment provision					8 class	1
29	Motivating pupil's parents for school enrollment	6 training			2 training	6 training	6
30	Teacher/volunteer teacher need		8 person	7 person			2
31	Food/meal provision to school children	110 person					1
32	Vocational training	12 training					1
NREM							
1	Environmental awareness and law education		2 training			6 training	2
2	Forestry law education			2 time			1
3	Organizing tree planting day			1 time			1
4	Illegal fishing prevention	6 training	2 training	5 training	14 training		5
5	Solving rubbish problems					6 training	1
Administration and Security							
1	Civil registration encouragement		2 training	15 training	16 training	6 training	4
2	Conflict resolution training				16 training		1
3	Land law dissemination	12 training		2 training		4 training	4
4	Provision of land titles/certificates			1150 doc			1
5	Land registration dissemination/enforcement					4 training	1
6	Drug and related law education	12 training			16 training	4 Time	3
7	Demining project	6 ha			480 ha	104 ha	3
8	Penal and civil law dissemination					6 training	1
Gender							
1	Gender mainstreaming concept training		4 training				1
2	Women vocational training				1 training	1 training	2
3	Tailor skill training			2 training			1
4	Food cooking/processing skill training				1 training		1
5	Lady makeup/hair dressing skill training				1 training		1
6	Law against domestic violence dissemination	12 training		6 training	16 training	6 training	5

Source: CDPD – District Priority Matrix

8.2 Temporary Agreements by Commune, for 2009²

At the District Integration Workshop (DIW) the Supporters (donors, agencies, private donors, NGOs, etc.) identify which projects/activities they would like to support or they put forward their own projects to be implemented in a particular commune. Once there is agreement between Commune Councils and Supporters on specific projects a **Temporary Agreement** is signed by the commune and the Supporter to show their mutual commitment to the identified projects/activities.

It is important to keep in mind that such Temporary Agreements do not necessarily result in implementation.

8.2.1 Temporary Agreements for 2009 as per DIW 2008 for Commune: Bansay Reak

Commune GIS	Commune	Temporary Agreements				Supporter	Funding Source	Listed in CIP befor DIW
		Project Name	Quantity	Unit	Est.Cost (K.Riels)			
Economic								
220401	Bansay Reak	Compost fertilizer training	1	training	2100	Department of Agriculture Forestry and Fisheries		✓
220401	Bansay Reak	Village veterinary training	1	person	1248	Department of Agriculture Forestry and Fisheries		✓
220401	Bansay Reak	Cow bank	4	village	0	Buddhist Community of Khmer		□
Social								
220401	Bansay Reak	Pump wells repairing technique training	7	well	300	Department of Rural Development		□
220401	Bansay Reak	Malaria public awareness education	5	Time	0	Department of Health		□
220401	Bansay Reak	Birth delivery awareness education	5	Time	0	Department of Health		□
220401	Bansay Reak	School support committee district level training	1	training	1200	Department of Rural Development		□
220401	Bansay Reak	Community plan implementation monitoring	1	training	1120	Department of Rural Development		□
220401	Bansay Reak	Teachers supply to all schools	1	schools	0	Department of Education Youth and Sports		□
220401	Bansay Reak	Monitoring community participatory sanitation promotion	1	training	1120	Department of Education Youth and Sports		□

² Not all the data from the CDPD has been translated to English, this has resulted in some cells in the TA tables being blank.

District Data Book 2009: Development Plans and Projects

Commune GIS	Commune	Temporary Agreements				Supporter	Funding Source	Listed in CIP befor DIW
		Project Name	Quantity	Unit	Est.Cost (K.Riels)			
220401	Bansay Reak	Community campaign plan implementation	1	training	1120	Department of Rural Development		<input type="checkbox"/>
220401	Bansay Reak	Water quality control	7	well	140	Department of Rural Development		<input type="checkbox"/>
220401	Bansay Reak	Adopt children program	12	Time	8704	Buddhist For Development		<input type="checkbox"/>
220401	Bansay Reak	Pump wells repair	7	well	2800	Department of Rural Development		✓
220401	Bansay Reak	Maternal health care education	0	training	0	Department of Health		✓
220401	Bansay Reak	Semester meeting at provincial level to strengthen community kindergarten	2	time	99	Department of Women		<input type="checkbox"/>
220401	Bansay Reak	Scholarship for poor pupils	1	schools	0	Department of Education Youth and Sports		<input type="checkbox"/>
220401	Bansay Reak	Morning meals provision program	1	schools	0	Department of Education Youth and Sports		<input type="checkbox"/>
220401	Bansay Reak	Child friendly program strengthening	1	schools	0	Department of Education Youth and Sports		<input type="checkbox"/>
220401	Bansay Reak	PPEY budget support to school	1	schools	0	Department of Education Youth and Sports		<input type="checkbox"/>
220401	Bansay Reak	Teachers refresher training	1	schools	0	Department of Education Youth and Sports		<input type="checkbox"/>
220401	Bansay Reak	Village sanitation campaign	1	training	600	Department of Rural Development		<input type="checkbox"/>
NREM								
220401	Bansay Reak	Forestry community formation	4	village	0	Buddhist Community of Khmer		<input type="checkbox"/>
Administration and Security								
220401	Bansay Reak	Labor law dissemination	1	training	400	Department of Labor and Vocational Training		<input type="checkbox"/>
220401	Bansay Reak	Woman and children anti-trafficking law dissemination	1	training	180	Department of Tourism		<input type="checkbox"/>
Gender								
220401	Bansay	Female village leader, WCFPs and female	2	training	564	Department of Women		<input type="checkbox"/>

District Data Book 2009: Development Plans and Projects

Commune GIS	Commune	Temporary Agreements				Supporter	Funding Source	Listed in CIP before DIW
		Project Name	Quantity	Unit	Est.Cost (K.Riels)			
	Reak	councilors forum support						
220401	Bansay Reak	Annual provincial level workshop on WCFPs activities reflection	1	training	254	Department of Women		<input type="checkbox"/>
220401	Bansay Reak	Pictorial maternity education training to CCWC	1	time	309	Department of Women		<input type="checkbox"/>
220401	Bansay Reak	District level training on community kindergarten operation	1	time	0	Department of Women		<input type="checkbox"/>
220401	Bansay Reak	CWCC meeting on gender mainstreaming in sector plans	1	time	256	Department of Women		<input type="checkbox"/>
220401	Bansay Reak	District and commune woman focal point capacity strengthening	1	time	99	Department of Women		<input type="checkbox"/>
220401	Bansay Reak	Domestic violence law and victim protection forum organizing	1	time	265	Department of Women		<input type="checkbox"/>

8.2.2 Temporary Agreements for 2009 as per DIW 2008 for Commune: Bos Sbov

Commune GIS	Commune	Temporary Agreements				Supporter	Funding Source	Listed in CIP befor DIW
		Project Name	Quantity	Unit	Est.Cost (K.Riels)			
Economic								
220402	Bos Sbov	Earth road construction to waste dumping area	1	place	12000	Department of Environment		<input type="checkbox"/>
220402	Bos Sbov	Compost fertilizer training	1	training	3000	Department of Agriculture Forestry and Fisheries		✓
220402	Bos Sbov	Village veterinary training	5	person	1200	Department of Agriculture Forestry and Fisheries		✓
Social								
220402	Bos Sbov	Child friendly program strengthening	1	schools	0	Department of Education Youth and Sports		<input type="checkbox"/>
220402	Bos Sbov	School support committee district level training	1	training	0	Department of Rural Development		<input type="checkbox"/>
220402	Bos Sbov	Scholarship for poor pupils	1	schools	0	Department of Education Youth and Sports		<input type="checkbox"/>

District Data Book 2009: Development Plans and Projects

Commune GIS	Commune	Temporary Agreements				Supporter	Funding Source	Listed in CIP befor DIW
		Project Name	Quantity	Unit	Est.Cost (K.Riels)			
220402	Bos Sbov	Teachers refresher training	1	schools	0	Department of Education Youth and Sports		<input type="checkbox"/>
220402	Bos Sbov	Semester meeting at provincial level to strengthen community kindergarten	2	time	99	Department of Women		<input type="checkbox"/>
220402	Bos Sbov	PPEY budget support to school	1	schools	0	Department of Education Youth and Sports		<input type="checkbox"/>
220402	Bos Sbov	Child friendly program strengthening	1	schools	0	Department of Education Youth and Sports		<input type="checkbox"/>
220402	Bos Sbov	Teachers supply to every school	1	schools	0	Department of Education Youth and Sports		<input type="checkbox"/>
220402	Bos Sbov	Literacy class operation	1	schools	0	Department of Education Youth and Sports		<input type="checkbox"/>
220402	Bos Sbov	Kindergarten class, community program	1	schools	0	Department of Education Youth and Sports		<input type="checkbox"/>
220402	Bos Sbov	Health improvement and poverty reduction	2	village	743	Department of Health		<input type="checkbox"/>
220402	Bos Sbov	Monitoring community participatory sanitation promotion	1	training	240	Department of Rural Development		<input type="checkbox"/>
220402	Bos Sbov	Community plan implementation monitoring	1	training	800	Department of Rural Development		<input type="checkbox"/>
220402	Bos Sbov	Morning meals provision program	1	schools	0	Department of Education Youth and Sports		<input type="checkbox"/>
NREM								
220402	Bos Sbov	Earth road construction to waste dumping area and dumping area improvement	1	place	80000	Department of Environment		<input type="checkbox"/>
220402	Bos Sbov	Environmental education billboard installation	2	place	320	Department of Environment		<input type="checkbox"/>
Administration and Security								
220402	Bos Sbov	Labor law dissemination	1	training	400	Department of Labor and Vocational Training		<input type="checkbox"/>
Gender								
220402	Bos Sbov	Female village leader, WCFPs and female councilors forum support	2	training	565	Department of Women		<input type="checkbox"/>

District Data Book 2009: Development Plans and Projects

Commune GIS	Commune	Temporary Agreements				Supporter	Funding Source	Listed in CIP before DIW
		Project Name	Quantity	Unit	Est.Cost (K.Riels)			
220402	Bos Sbov	Annual provincial level workshop on WCFPs activities reflection	1	training	256	Department of Women		<input type="checkbox"/>
220402	Bos Sbov	Pictorial maternity education training to CCWC	1	time	550	Department of Women		<input type="checkbox"/>
220402	Bos Sbov	District level training on community kindergarten operation	1	time	176	Department of Women		<input type="checkbox"/>
220402	Bos Sbov	CWCC meeting on gender mainstreaming in sector plans	1	time	256	Department of Women		<input type="checkbox"/>
220402	Bos Sbov	District and commune woman focal point capacity strengthening	1	time	99	Department of Women		<input type="checkbox"/>
220402	Bos Sbov	Domestic violence law and victim protection forum organizing	1	time	256	Department of Women		<input type="checkbox"/>
220402	Bos Sbov	Woman and children anti-trafficking law dissemination	1	training	240	Department of Tourism		<input type="checkbox"/>
220402	Bos Sbov	Dissemination of elimination of all forms of discrimination against women	1	time	256	Department of Women		<input type="checkbox"/>

8.2.3 Temporary Agreements for 2009 as per DIW 2008 for Commune: Koun Kriel

Commune GIS	Commune	Temporary Agreements				Supporter	Funding Source	Listed in CIP before DIW
		Project Name	Quantity	Unit	Est.Cost (K.Riels)			
Economic								
220403	Koun Kriel	Village veterinary training	4	village	4200	Association of Farmer Development		<input type="checkbox"/>
220403	Koun Kriel	Vegetable seeds request	20	package	8000	Association of Farmer Development		✓
220403	Koun Kriel	Calf for raising request	20	Head	16000	Association of Farmer Development		✓
Social								
220403	Koun Kriel	Health care improvement and poverty reduction	9	village	6019	Department of Health		<input type="checkbox"/>
220403	Koun Kriel	PPEY budget support to school	1	schools	0	Department of Education Youth and Sports		<input type="checkbox"/>

District Data Book 2009: Development Plans and Projects

Commune GIS	Commune	Temporary Agreements				Supporter	Funding Source	Listed in CIP before DIW
		Project Name	Quantity	Unit	Est.Cost (K.Riels)			
220403	Koun Kriel	Adopt children program	12	Time	16363	Buddhist For Development		<input type="checkbox"/>
220403	Koun Kriel	Water quality control	3	well	5	Department of Rural Development		<input type="checkbox"/>
220403	Koun Kriel	Pump wells repairing technique training	3	well	40	Department of Rural Development		<input type="checkbox"/>
220403	Koun Kriel	Semester meeting at provincial level to strengthen community kindergarten	2	time	99	Department of Women		<input type="checkbox"/>
220403	Koun Kriel	Pump wells repair	3	well	4440	Department of Rural Development		✓
220403	Koun Kriel	Scholarship for poor pupils	1	schools	0	Department of Education Youth and Sports		<input type="checkbox"/>
220403	Koun Kriel	Morning meals provision program	1	schools	0	Department of Education Youth and Sports		<input type="checkbox"/>
220403	Koun Kriel	Teachers refresher training	1	schools	0	Department of Education Youth and Sports		<input type="checkbox"/>
NREM								
220403	Koun Kriel	Forestry community facilitation and education	11	village	32000	Association of Farmer Development		<input type="checkbox"/>
Administration and Security								
220403	Koun Kriel	District workshop for data gathering	1	Time	320	Land Used Planning Unit		<input type="checkbox"/>
220403	Koun Kriel	Mine field survey mission	1	Time	640	Land Used Planning Unit		<input type="checkbox"/>
220403	Koun Kriel	Provincial workshop to approve demining plan	1	Time	1080	Land Used Planning Unit		<input type="checkbox"/>
220403	Koun Kriel	Demining land acquisition follow up and supervision	1	Time	640	Land Used Planning Unit		<input type="checkbox"/>
220403	Koun Kriel	Commune meeting for mine field data gathering	1	Time	90	Land Used Planning Unit		<input type="checkbox"/>
220403	Koun Kriel	Labor law dissemination	1	training	400	Department of Labor and Vocational Training		<input type="checkbox"/>
Gender								
220403	Koun Kriel	District level training on community kindergarten operation	1	time	307	Department of Women		<input type="checkbox"/>
220403	Koun Kriel	Law against domestic violence dissemination	0	training	0	Department of Women		✓

Commune GIS	Commune	Temporary Agreements				Supporter	Funding Source	Listed in CIP before DIW
		Project Name	Quantity	Unit	Est.Cost (K.Riels)			
220403	Koun Kriel	Female village leader, WCFPs and female councilors forum support	2	training	565	Department of Women		<input type="checkbox"/>
220403	Koun Kriel	Pictorial maternity education training to CCWC	1	training	270	Department of Women		<input type="checkbox"/>
220403	Koun Kriel	CWCC meeting on gender mainstreaming in sector plans	1	time	256	Department of Women		<input type="checkbox"/>
220403	Koun Kriel	District and commune woman focal point capacity strengthening	1	time	99	Department of Women		<input type="checkbox"/>
220403	Koun Kriel	Domestic violence law and victim protection forum organizing	1	time	256	Department of Women		<input type="checkbox"/>
220403	Koun Kriel	Woman and children anti-trafficking law dissemination	1	training	240	Department of Women		<input type="checkbox"/>
220403	Koun Kriel	Annual provincial level workshop on WCFPs activities reflection	1	training	256	Department of Women		<input type="checkbox"/>

8.2.4 Temporary Agreements for 2009 as per DIW 2008 for Commune: Samraong

Commune GIS	Commune	Temporary Agreements				Supporter	Funding Source	Listed in CIP befor DIW
		Project Name	Quantity	Unit	Est.Cost (K.Riels)			
Economic								
220404	Samraong	Cow bank	10	Head	8000	Association of Farmer Development		<input type="checkbox"/>
220404	Samraong	Dam repairing	0	m	0	Department of Water Resources and Meteorology		✓
220404	Samraong	Village veterinary training	5	person	120	Department of Agriculture Forestry and Fisheries		✓
220404	Samraong	Dam repair	700	m	85030	Department of Water Resources and Meteorology		<input type="checkbox"/>
220404	Samraong	Water user group formation	1	Team	2000	Department of Water Resources and Meteorology		<input type="checkbox"/>
220404	Samraong	Compost fertilizer training	1	training	3000	Department of Agriculture Forestry and Fisheries		✓
Social								

District Data Book 2009: Development Plans and Projects

Commune GIS	Commune	Temporary Agreements				Supporter	Funding Source	Listed in CIP befor DIW
		Project Name	Quantity	Unit	Est.Cost (K.Riels)			
220404	Samraong	Semester meeting at provincial level to strengthen community kindergarten	2	time	99	Department of Women		<input type="checkbox"/>
220404	Samraong	Adopt children program	12	Time	13903	Buddhist For Development		<input type="checkbox"/>
220404	Samraong	Water quality control	5	well	100	Department of Rural Development		<input type="checkbox"/>
220404	Samraong	Pump wells repairing technique training	5	well	200	Department of Rural Development		<input type="checkbox"/>
220404	Samraong	Malaria education	15	Time	0	Department of Health		<input type="checkbox"/>
220404	Samraong	Scholarship for poor pupils	1	schools	0	Department of Education Youth and Sports		<input type="checkbox"/>
220404	Samraong	Morning meals provision program	1	schools	0	Department of Education Youth and Sports		<input type="checkbox"/>
220404	Samraong	Teachers refresher training	1	training	0	Department of Education Youth and Sports		<input type="checkbox"/>
220404	Samraong	Child friendly program strengthening	1	schools	0	Department of Education Youth and Sports		<input type="checkbox"/>
220404	Samraong	PPEY budget support to school	1	schools	0	Department of Education Youth and Sports		<input type="checkbox"/>
220404	Samraong	School construction	1	schools	0	Department of Education Youth and Sports		<input type="checkbox"/>
220404	Samraong	Pump wells repair	5	well	2000	Department of Rural Development		✓
220404	Samraong	Antenatal care service accessibility improvement	0	time	0	Department of Health		✓
220404	Samraong	Birth delivery awareness education	15	Time	450	Department of Health		<input type="checkbox"/>
NREM								
220404	Samraong	Environmental education billboard installation	3	place	450	Department of Environment		<input type="checkbox"/>
220404	Samraong	NTFP fund support	9	village	4000	Community Development Action		<input type="checkbox"/>
220404	Samraong	Land forest study	9	village	4200	Community Development Action		<input type="checkbox"/>
220404	Samraong	Forestry community facilitation	9	village	4200	Community Development Action		<input type="checkbox"/>

District Data Book 2009: Development Plans and Projects

Commune GIS	Commune	Temporary Agreements				Supporter	Funding Source	Listed in CIP before DIW
		Project Name	Quantity	Unit	Est.Cost (K.Riels)			
220404	Samraong	Forestry law dissemination	9	village	4000	Community Development Action		<input type="checkbox"/>
220404	Samraong	Sign board mapping and tourist information board	1	piece	3000	Department of Tourism		<input type="checkbox"/>
Administration and Security								
220404	Samraong	Mine field survey mission	1	Time	600	Land Used Planning Unit		<input type="checkbox"/>
220404	Samraong	Demining land acquisition follow up and supervision	1	Time	600	Land Used Planning Unit		<input type="checkbox"/>
220404	Samraong	District workshop for data gathering	1	Time	320	Land Used Planning Unit		<input type="checkbox"/>
220404	Samraong	Provincial workshop to approve demining plan	1	Time	545	Land Used Planning Unit		<input type="checkbox"/>
220404	Samraong	Commune meeting for mine field data gathering	1	Time	99	Land Used Planning Unit		<input type="checkbox"/>
220404	Samraong	Labor law dissemination	1	training	400	Department of Labor and Vocational Training		<input type="checkbox"/>
Gender								
220404	Samraong	Annual provincial level workshop on WCFPs activities reflection	255	training	255	Department of Women		<input type="checkbox"/>
220404	Samraong	Law against domestic violence dissemination	1	training	250	Department of Women		✓
220404	Samraong	Female village leader, WCFPs and female councilors forum support	2	training	565	Department of Women		<input type="checkbox"/>
220404	Samraong	Pictorial maternity education training to CCWC	1	time	540	Department of Women		<input type="checkbox"/>
220404	Samraong	District level training on community kindergarten operation	1	time	307	Department of Women		<input type="checkbox"/>
220404	Samraong	CWCC meeting on gender mainstreaming in sector plans	1	time	554	Department of Women		<input type="checkbox"/>
220404	Samraong	District and commune woman focal point capacity strengthening	1	time	99	Department of Women		<input type="checkbox"/>
220404	Samraong	Domestic violence law and victim protection forum organizing	1	time	554	Department of Women		<input type="checkbox"/>
220404	Samraong	Woman and children anti-trafficking law dissemination	1	training	250	Department of Tourism		<input type="checkbox"/>

8.2.5 Temporary Agreements for 2009 as per DIW 2008 for Commune: Ou Smach

Commune GIS	Commune	Temporary Agreements				Supporter	Funding Source	Listed in CIP before DIW
		Project Name	Quantity	Unit	Est.Cost (K.Riels)			
Economic								
220405	Ou Smach	Cow bank creation	15	Head	12000	Association of Farmer Development		<input type="checkbox"/>
220405	Ou Smach	Cow bank	0	Head	0	Association of Farmer Development		✓
Social								
220405	Ou Smach	Teachers supply for every school	1	schools	0	Department of Education Youth and Sports		<input type="checkbox"/>
220405	Ou Smach	PPEY budget support to school	1	schools	0	Department of Education Youth and Sports		<input type="checkbox"/>
220405	Ou Smach	Teachers refresher training	1	schools	0	Department of Education Youth and Sports		<input type="checkbox"/>
220405	Ou Smach	Morning meals provision program	1	schools	0	Department of Education Youth and Sports		<input type="checkbox"/>
220405	Ou Smach	Scholarship for poor pupils	1	schools	0	Department of Education Youth and Sports		<input type="checkbox"/>
220405	Ou Smach	Child friendly program strengthening	1	schools	0	Department of Education Youth and Sports		<input type="checkbox"/>
Administration and Security								
220405	Ou Smach	Demining land acquisition follow up and supervision	1	Time	640	Cambodian Mine Action Center		<input type="checkbox"/>
220405	Ou Smach	Commune meeting for mine field data gathering	1	Time	90	Cambodian Mine Action Center		<input type="checkbox"/>
220405	Ou Smach	District workshop for data gathering	1	Time	320	Cambodian Mine Action Center		<input type="checkbox"/>
220405	Ou Smach	Mine field survey mission	1	Time	640	Cambodian Mine Action Center		<input type="checkbox"/>
220405	Ou Smach	Labor law dissemination	1	training	400	Department of Labor and Vocational Training		<input type="checkbox"/>
220405	Ou Smach	Provincial workshop to approve demining plan	1	Time	1080	Cambodian Mine Action Center		<input type="checkbox"/>

District Data Book 2009: Development Plans and Projects

Commune GIS	Commune	Temporary Agreements				Supporter	Funding Source	Listed in CIP befor DIW
		Project Name	Quantity	Unit	Est.Cost (K.Riels)			
Gender								
220405	Ou Smach	Women and children trafficking prevention, drug and violence dissemination	1	training	890	Department of Social and Veteran Affairs and Youth Rehabilitation		<input type="checkbox"/>
220405	Ou Smach	Woman and children anti-trafficking law dissemination	1	training	180	Department of Tourism		<input type="checkbox"/>
220405	Ou Smach	Domestic violence law and victim protection forum organizing	1	time	254	Department of Women		<input type="checkbox"/>
220405	Ou Smach	District and commune woman focal point capacity strengthening	1	time	99	Department of Women		<input type="checkbox"/>
220405	Ou Smach	District level training on community kindergarten operation	1	time	254	Department of Women		<input type="checkbox"/>
220405	Ou Smach	District level training on community kindergarten operation	1	time	307	Department of Women		<input type="checkbox"/>
220405	Ou Smach	Pictorial maternity education training to CCWC	1	time	565	Department of Women		<input type="checkbox"/>
220405	Ou Smach	Annual provincial level workshop on WCFPs activities reflection	1	training	256	Department of Women		<input type="checkbox"/>
220405	Ou Smach	Female village leader, WCFPs and female councilors forum support	2	training	565	Department of Women		<input type="checkbox"/>
220405	Ou Smach	Law against domestic violence dissemination	0	training	0	Department of Women		✓

Source: CDPD, District Level Detail TA resulting from DIW

8.3 Outputs, estimated and actual costs of C/S Fund Projects between 2005 and 2008, by Commune

Commune	Project Type	Budget Year	Output		Quantity	Unit	Unit Cost MR	
			Description	Type			Estimate	Actual
Bansay Reak	Rural Transport	2005	Laterite road	New	1.4	Km	19.45	17.88
Bansay Reak	Rural Transport	2005	Single pipe culvert	New	2	Place	3.11	17.88
Bansay Reak	Rural Transport	2006	Earth road	New	1.59	Km	25.70	35.57
Bansay Reak	Rural Transport	2006	Double pipe culvert	New	1	Place	2.66	35.57
Bansay Reak	Rural Transport	2006	Single cell box culvert	New	1	Place	7.21	35.57
Bansay Reak	Rural Transport	2007	Laterite road	New	3	Km	72.98	24.30
Bansay Reak	Rural Transport	2008	Earth road	New	0.71	Km	26.90	29.69
Bansay Reak	Rural Transport	2008	Single pipe culvert	New	1	Place	3.56	29.69
Bos Sbov	Irrigation	2005	Earth dam	Repair	0.5	Km	24.53	13.77
Bos Sbov	Rural Transport	2006	Laterite road	New	0.715	Km	14.04	33.41
Bos Sbov	Rural Transport	2006	Double cell box culvert	New	2	Place	19.51	33.41
Bos Sbov	Rural Transport	2007	Laterite road	New	1.31	Km	19.37	25.29
Bos Sbov	Rural Transport	2007	Single pipe culvert	New	3	Place	6.02	25.29
Bos Sbov	Irrigation	2007	Earth dam	Repair	0.7	Km	24.39	12.19
Bos Sbov	Rural Transport	2008	Laterite road	New	0.644	Km	30.93	27.29
Bos Sbov	Rural Transport	2008	Laterite road	New	0.92	Km	25.25	25.28
Koun Kriel	Irrigation	2005	Earth dam	Repair	0.35	Km	17.69	21.78
Koun Kriel	Irrigation	2005	Small water gate	Repair	1	Place	1.94	21.78
Koun Kriel	Irrigation	2005	Diversion weirs (general)	New	1	Place	11.13	21.78
Koun Kriel	Rural Transport	2006	Earth road	New	2.45	Km	39.88	51.35
Koun Kriel	Rural Transport	2006	Laterite road	New	0.15	Km	1.55	51.35
Koun Kriel	Rural Transport	2006	Single pipe culvert	New	1	Place	1.70	51.35
Koun Kriel	Rural Transport	2006	Single cell box culvert	New	1	Place	8.23	51.35
Koun Kriel	Rural Transport	2007	Earth road	New	6.24	Km	121.33	51.21
Koun Kriel	Rural Transport	2007	Single pipe culvert	New	6	Place	12.61	41.96
Koun Kriel	Rural Transport	2007	Earth road	New	3.44	Km	71.33	41.96
Koun Kriel	Rural Transport	2007	Single pipe culvert	New	3	Place	6.30	51.21
Koun Kriel	Rural Transport	2007	Single cell box culvert	New	3	Place	26.10	51.21
Koun Kriel	Irrigation	2008	Earth dam	Repair	0.714	Km	86.99	42.52
Samraong	Irrigation	2005	Double pipe culvert with gate	New	1	Place	7.20	22.32
Samraong	Irrigation	2005	Earth dam	Repair	0.72	Km	31.76	22.32
Samraong	Rural Transport	2006	Laterite road	New	1.637	Km	32.85	40.88
Samraong	Rural Transport	2006	Single pipe culvert	New	4	Place	8.11	40.88

Commune	Project Type	Budget Year	Output		Quantity	Unit	Unit Cost MR	
			Description	Type			Estimate	Actual
Samraong	Irrigation	2006	Earth dam	New	0.45	Km	29.60	29.57
Samraong	Irrigation	2007	Drain pipe for flood water	New	2	Line	6.39	17.91
Samraong	Irrigation	2007	Earth dam	New	0.4	Km	29.44	17.91
Samraong	Rural Transport	2007	Laterite road	New	4.41	Km	80.16	28.57
Samraong	Rural Transport	2007	Single pipe culvert	New	3	Place	5.76	28.57
Samraong	Rural Transport	2008	Earth road	New	0.878	Km	40.21	48.58
Samraong	Rural Transport	2008	Double pipe culvert	New	1	Place	8.78	48.58
Ou Smach	Rural Transport	2005	Triple pipe culvert	New	1	Place	9.31	19.97
Ou Smach	Rural Transport	2005	Earth road	New	0.36	Km	4.76	19.97
Ou Smach	Rural Transport	2005	Single pipe culvert	New	1	Place	4.02	19.97
Ou Smach	Rural Transport	2005	Double pipe culvert	New	1	Place	6.86	19.97
Ou Smach	Rural Transport	2006	Laterite road	New	1.26	Km	12.99	38.03
Ou Smach	Rural Transport	2006	Triple cell box culvert	New	1	Place	14.67	38.03
Ou Smach	Rural Transport	2006	Earth road	New	0.349	Km	10.37	38.03
Ou Smach	Rural Transport	2007	Earth road	New	2.4	Km	49.13	37.43
Ou Smach	Rural Transport	2007	Single pipe culvert	New	8	Place	25.75	37.43
Ou Smach	Rural Transport	2007	Laterite road	New	2.52	Km	42.39	24.20

Source: PID

8.4 Total Expenditure on C/S Fund Projects by sector and commune between 2005 and 2008

Sector	Total Cost in Million Riels				
	Bansay Reak	Bos Sbov	Koun Kriel	Samraong	Ou Smach
Irrigation		25.96	64.30	69.79	
Rural Transport	107.43	85.98	93.17	118.03	81.60

Source: PID

8.5 Actual 2009 C/S Fund projects by Commune

Commune	Project Type	Project Output		Quantity	Unit	Fund Source (Riels)		
		Description	Type			Total	C/S	Local Contribution
Sangkat Bansay Reak	Rural Transport	Earth road	New	0.87	km	39,810,600	39,710,600	100,000
Sangkat Bansay Reak	Rural Transport	Single pipe culvert 0.6m diameter	New	1	Place	39,810,600	39,710,600	100,000
Sangkat Bansay Reak	Rural Transport	Single pipe culvert 0.8m diameter	New	1	Place	39,810,600	39,710,600	100,000
Sangkat Bansay Reak	Rural Transport	Single pipe culvert 0.6m diameter	New	1	Place	39,810,600	39,710,600	100,000
Sangkat Bansay Reak	Rural Transport	Single pipe culvert 0.8m diameter	New	1	Place	39,810,600	39,710,600	100,000
Sangkat Bos Sbov	Rural Transport	Laterite road	New	0.718	km	35,611,821	35,511,821	100,000
Sangkat Koun Kriel	Irrigation	Double pipe culvert 1.0m diameter with stop logs	New	1	Place	65,598,900	65,398,900	200,000
Sangkat Koun Kriel	Irrigation	Earth dam	New	0.28	km	65,598,900	65,398,900	200,000
Sangkat Samraong	Rural Transport	Earth road	New	0.3	km	42,881,742	42,681,742	200,000
Sangkat Samraong	Rural Transport	Earth road	New	0.15	km	55,669,122	55,469,122	200,000
Sangkat Samraong	Rural Transport	Earth road	New	0.55	km	55,669,122	55,469,122	200,000
Sangkat Samraong	Rural Transport	Earth road	New	0.1	km	55,669,122	55,469,122	200,000
Sangkat Samraong	Rural Transport	Single pipe culvert 0.6m diameter	New	2	Place	55,669,122	55,469,122	200,000
Sangkat Samraong	Rural Transport	Single pipe culvert 0.8m diameter	New	2	Place	55,669,122	55,469,122	200,000
Sangkat Samraong	Rural Transport	Single pipe culvert 1.0m diameter	New	1	Place	55,669,122	55,469,122	200,000
Sangkat Ou Smach	Rural Transport	Earth road	New	0.52	km	79,301,600	79,001,600	300,000
Sangkat Ou Smach	Rural Transport	Earth road	New	0.42	km	79,301,600	79,001,600	300,000
Sangkat Ou Smach	Rural Transport	Earth road	New	0.42	km	79,301,600	79,001,600	300,000
Sangkat Ou Smach	Rural Transport	Earth road	New	0.39	km	79,301,600	79,001,600	300,000
Sangkat Ou Smach	Rural Transport	Single pipe culvert 1.0m diameter	New	2	Place	79,301,600	79,001,600	300,000
Sangkat Ou Smach	Rural Transport	Single pipe culvert 1.0m diameter	New	2	Place	79,301,600	79,001,600	300,000
Sangkat Ou Smach	Rural Transport	Single pipe culvert 1.0m diameter	New	1	Place	79,301,600	79,001,600	300,000

Source: PID

9 District level Projects from 2006 to 2009

District Initiative Projects (DIPs) are funded by Danida, DFID and PSDD (UNDP, DFID and SIDA).

Funding for 2006-2008

Between 2006 and 2008 there were 14 provinces funded by PSDD and 10 by Danida and DFID. The list of provinces and who funded these is below

Danida and DFID funded DIPs:

Kampong Cham	Kampong Speu	Koh Kong	Kratie	Monduliri
Pursat	Ratanakiri	Siem Reap	Sihanoukville	Kep

PSDD funded DIPs:

Banteay Meanchey	Battambang	Kampong Chhnang	Kandal	Phnom Penh
Prey Veng	Svay Rieng	Takeo	Kampong Thom	Preah Vihear
Stung Treng	Kampot	Oddar Meanchey	Pailin	

Funding for 2009

In 2009 there was a change to the number of provinces funded by the two streams. Danida and DFID were still funding the same 10 provinces they had been funding the previous three years, but two more provinces were added *Kampong Thom and Kampot*. Now PSDD funds 12 provinces and Danida and DFID fund 12.

9.1 District Initiative Infrastructure Projects from 2006 to 2009

9.1.1 District Initiative Infrastructure Projects for 2006 to 2008

Date	Project Name	Implementing Agencies	Budget (US\$)	Project Output & Capacity	Number of Beneficiaries
2006	Road repair and laterite surfacing	Inter-communes	7,387.91		
2006	Two single culvert with diameter 60cm	Inter-communes	989.87		
2006	One single culvert with diameter 80cm	Inter-communes	709.30		
2006	One double culvert with diameter 80cm	Inter-communes	1,213.87		
2006	Afridev wells	Inter-communes	1,450.00		
2007	Construct earth road	Inter-commune	7,761.00		
2008	Earth Road construction	Inter-commune	8,431.50	1050m.	2communes, 19,094persons

9.1.2 District Initiative Infrastructure Projects in 2009

No District Initiative Infrastructure Projects have been implemented in this district for 2009

9.2 District Initiative Service Projects from 2006 to 2009

9.2.1 District Initiative Service Projects for 2006 to 2008

Date	Project Names	Implementing agencies	Budget (US\$)	Project Output & Capacity	Number of Beneficiaries
2006	Computer training for district officials 6 persons	District	420.00		
2006	Sewing/ tailoring training for poor women 2 women per communes, 5 communes	District	2,000.00		
2006	Training on implementation and project monitoring	District	140.00		
2006	Meeting on illegal fishing in all communes of district	District	140.00		
2006	Education on forest illegal logging	Environment department	1,810.00		
2007	Produce posters for prevention from illegal fishing	District Agri	1,161.00		
2007	Vocational training on hair dressing	District WA	1,485.00		
2007	Conduct preventions from illegal fishing activities	District Agri	340.00		
2007	Training on traffic law for Khan, Sangkat and villages	District Police	161.50		
2007	Training on land law	District Land	137.50		
2008	Dissemination on land law	District land	427.60	10 course	5communes,300persons
2008	Diversity rice production	DAFF	819.10	3courses	2communes,75persons
2008	Dissemination on law against domestic violence	District WA	601.99	14 courses	4communes,457persons
2008	Primary health care training	Health center	604.16	16 courses	2communes,400persons
2008	Dissemination on dengue fever	Health center	360.15	15 courses	2communes,375persons

9.2.2 District Initiative Service Projects in 2009

Project Name	Sector	Implementing Agency	Budget	Project outputs/ capacities	No. of Beneficiaries		Progress	Remarks on Issues of Progress
					Total	Female		
Literacy class	EDU	Education Office	\$1,200.00	2courses	50	35	40%	
Primary health care for pregnant women	HEA	Health Center	\$250.00	5courses	250	200	100%	
Dissemination on tuberculosis for villagers	HEA	Health Center	\$250.00	5courses	250	200	100%	
Village veterinarian training	AGR	PDA	\$1,086.00	1course	15	8	100%	
Diversity rice production	AGR	PDA	\$1,814.00	4courses	100	70	100%	
Dissemination of fisheries law for villagers	AGR	Fishery Admin	\$200.00	4courses	100	50	100%	
Dissemination of land use planning	LUM	LMUCC Office	\$450.00	5courses	300	200	0%	
Dissemination of law of drug addiction used	SOC	Police Inspection	\$500.00	5courses	100	50	0%	
Dissemination of law against domestic violence	GEN	WA Office	\$1,000.00	20courses	600	200	100%	

9.3 Inter Commune Council Projects in 2008 and 2009

9.3.1 ICC Projects in 2008

No ICC projects in this district at this time

9.3.2 ICC Projects in 2009

No ICC projects in this district at this time

Source: ICC project, Ministry of Interior (DoLA), -UNDP project for Local Governance – DDLG

9.4 Other Projects in 2008 and 2009

9.4.1 RPRP

There are no RPRP projects being implemented in this district or province at this time. The RPRP is only being implemented in Svay Rieng and Prey Veng

9.4.1.1 RPRP Projects from 2006 to 2008

No RPRP projects in this district at this time

9.4.1.2 RPRP Projects in 2009

No RPRP projects in this district at this time

9.4.2 Seth Korma

9.4.2.1 Seth Koma 2007

Description of Outputs/Activities	Budget (1 US\$ = 4000 Riels)
1.1 Monthly CCWC meeting	\$1,008
1.2 Quarterly CCWC meeting	\$658
1.3 Operation support cost	\$3,600
1.4 Village meeting on Child Rights and child protection	\$693
1.5 Village meeting on Immunization, health issues	\$693
1.6 village meeting on Education	\$693
1.7 Incentive CPS teachers for 10 months	\$10,050
1.8 Monitoring the functioning of CPS classes	\$536
1.9 Awareness raising on women and child rights	\$4,800
GRAND TOTAL	\$22,731

Source: UNICEF

9.4.2.2 Seth Koma 2008

Description of Outputs/Activities	Budget (1 US\$ = 4000 Riels)
Community able to identify and articulate critical development needs for children.	
CCWC monthly meetings (24 Communes)	\$1,008
CCWC quarterly meetings (24 Communes)	\$462
Operational support (24 Communes)	\$3,600
Village meeting on child rights and child protection (24 Communes)	\$693
Village meeting on health issues (24 Communes)	\$693
Village meeting on education (24 Communes)	\$693
Incentive for CPS teachers (22 Communes)	\$10,050
Monitoring the functioning of CPS classes (22 Communes)	\$536
Campaign on woman and child right (24 Communes)	\$4,800
Sub-total for all outputs	\$22,535
Contingency cost	\$196
GRAND TOTAL	\$22,731

Source: UNICEF

9.4.2.3 Seth Koma 2009

Description			Anlong Veaeng	Banteay Ampil	Chong Kal	Trapeang Prasat	Samraong	Total
# Comm.			5	4	4	6	5	24
# Village			47	74	25	38	47	231
Activity and budget	Ope. costs CCWC	Comm.	5	4	4	6	5	24
		Budget	\$1,000	\$800	\$800	\$1,200	\$1,000	\$4,800
	CPS	Village	27	10	25	28	13	103
		Budget	\$3,645	\$1,314	\$3,375	\$3,780	\$1,755	\$13,869
	Parenting Education	Village	47	10	25	38	17	137
		Budget	\$2,961	\$630	\$1,806	\$2,934	\$1,071	\$9,402
	CLTS	Village	0	27	0	0	13	40
		Budget	\$0	\$7,365	\$0	\$0	\$3,079	\$10,444
	PHAST	Village	0	15	4	0	0	19
		Budget	\$0	\$3,095	\$731	\$0	\$0	\$3,826
	Special health intervention	Support MMR	5	4	4	6	5	24
		Budget	\$1,000	\$800	\$800	\$1,200	\$1,000	\$4,800
	Outreach	Comm	1	1	0	1	0	3
		Budget	\$504	\$1,512	\$0	\$756	\$0	\$2,772
	Discretionary Fund	Comm.	1	1	0	1	0	3
		Budget	\$500	\$500	\$0	\$500	\$0	\$1,500
Village Mapping			\$66	\$162	\$0	\$81	\$0	\$309
Total			\$9,676	\$16,178	\$7,512	\$10,451	\$7,905	\$51,722

Source: UNICEF

SECTION D: SERVICES AND ORGANIZATIONS

10 Infrastructure

10.1 Length of and Expenditure on Roads in 2008, by District

Roads	OMC	Anlong Veng	Banteay Ampil	Chongkal	Samrong	Trapeang Prssath
Length of paved road in the district	108	40	0	0	30	38
Length of unpaved roads in the district	259	18	12	39	190	0
Amount spent on construction of roads in 2008	555,074	37,043	34,838	41,613	400,276	41,305
Amount spent on repair and rehabilitation of roads in 2008	1,172,373	36,089	26,172	92,693	1,017,419	0

Note 1: Please note that these data are not necessarily complete or correct. The data are derived from government agencies at provincial and district level which used different recording systems, did not always have complete data or were, sometimes, less than willing to share their data.

Note 2: Please be aware that these data are incomplete due to the fact that the amounts for the construction, repair and rehabilitation recorded reflect only funds provided by the government, not the contributions by any other parties.

10.2 Scale of and Expenditure on Irrigation in 2008, by District

Irrigation	OMC	Anlong Veng	Banteay Ampil	Chongkal	Samrong	Trapeang Prssath
Number of irrigation schemes operating in 2008	9	3	2	2	2	n/a
Total nr of hectares under irrigation in dry season 2008	450	140	100	110	100	n/a
Total funds spent in 2008 on construction of irrigation systems	626,708	278,695	198,881	73,660	75,471	n/a
Total funds spent in 2008 on rehabilitation/repair of irrigation systems	18,530	9,400	3,500	2,530	3,100	n/a
Total funds spent in 2008 on operation and maintenance	645,238	288,095	202,381	76,190	78,571	n/a

Note 1: Please note that these data are not necessarily complete or correct. The data are derived from government agencies at provincial and district level which used different recording systems, did not always have complete data or were, sometimes, less than willing to share their data.

Note 2: Please be aware that the data above are incomplete as these only reflect funds provided by the government, not the contributions by farmers or other parties.

10.3 Power Supply in 2008, by District

Electricity	OMC	Anlong Veng	Banteay Ampil	Chongkal	Samrong	Trapeang Prssath
Total number of electricity connections to households	3,503	950	n/a	305	2,043	205
Total number of electricity connections to agencies, companies, organizations	86	10	n/a	7	66	3
Total volume in KWh of electricity consumed last in 2008	9,901,263	90,455	n/a	16,115	9,785,880	8,813
Total amount collected from users for consumed electricity	2,941,229	43,074	n/a	7,674	2,886,285	4,197
Per capita electricity consumption in 2008 in Kwh	256	3	n/a	1	167	0

Note 1: Please note that these data are not necessarily complete or correct. The data are derived from government agencies at provincial and district level which used different recording systems, did not always have complete data or were, sometimes, less than willing to share their data.

Note 2: These data only record electricity provided by electricity companies and does not include homes powered by generators or batteries (for this information see Section B: General Profile, Part 1: General Information; table 1.3.1 and chart 1.3.4).

Note 3: In most provinces electricity is only provided through town-based networks

Note 4: Per capita consumption is calculated by dividing the total volume of electricity produced in 2008 by the number of people living in each district as per the 2008 census (for the provincial data it is calculated against the number of people living in the province)

11 Health Facilities

Please note that the Operational District (health) boundaries are different to the administrative district boundaries. Therefore the data provided here shows the facilities, staff, NGOs etc in each Operational District within the province NOT the administrative district.

Acronyms

Com Cov	Commune Covered	MW2	Secondary Midwives
CPA	Complementary Package of Activities	NU1	Primary Nurse
Dr	Doctor	NU2	Secondary Nurse
FDH	Former District Hospital	OD	Operational District
HC	Health Center	Others	Other Staff
HC (NB)	Health Center no building	PHD	Provincial Health Department
HP	Health Post	Pop 04-05	Population Covered 2004 or 2005
MA	Medical Assistant	RH	Referral Hospital
MPA	Minimum Package of Activities	Vil Cov	Village Covered
MW1	Primary Midwives	VIL-HC	Distance from Village to Health Center

11.1 Health Facilities in the Province, by Operational District

Otdar Mean Chey	OD	RH	HC	HP
Samraong	1	1	14	
Total	1	1	14	0

11.2 Health Facilities and Staff in the province, by Operational District

This table shows health facilities, staff and coverage of health facilities in each operational district.

No	Facility Name	Type	Class	Dr	Ma	Nu2	Nu1	Mw2	Mw1	Others	Com Cov	Vil Cov	Pop. 04-05
Samraong													
1	Ampil	FDH	MPA	0	0	5	7	0	2	2	1	23	10,203
2	Anlong Veaeng	FDH	MPA	2	1	15	20	1	1	5	4	36	19,883
3	Beng	HC	None MPA	0	0	1	10	0	0	3	1	16	8,657
4	Bos Sbov	HC	MPA	0	0	1	1	1	0	2	1	7	3,098
5	Chong Kal	FDH	MPA	0	0	4	5	0	3	3	2	14	11,068
6	Kaun Kriel	HC	MPA	0	0	1	2	0	0	3	4	23	12,379
7	Kouk Khpos	HC	MPA	0	0	1	10	0	0	3	3	19	7,599
8	Kouk Mon	HC	MPA	0	0	1	2	2	1	4	3	12	7,660
9	Ou Smach	HC	MPA	0	1	1	2	0	0	2	2	9	6,735
10	Pongro Ta Paen	HC	None MPA	0	0	4	5	0	3	3	2	10	7,141
11	Samraong	HC	MPA	0	0	1	1	0	1	3	3	20	19,310
12	Trapeang Prasat	HC	MPA	0	0	3	5	0	1	1	2	14	8,223
13	Trapeang Prei	HC	MPA	0	0	3	2	0	1	3	2	16	6,599
Total:				2	2	41	72	4	13	37	30	219	128,555

Source: MEDiCAM – Infrastructure - (http://www.medicam-cambodia.org/hsi/health_system/srch/index.asp?cboLcn=6&cmdSearch=Search&cboCHName=&cboType=)

11.3 Deliveries in 2007 in the Province, by Operational District

OD	Deliveries	Deliveries at home		Deliveries	Total deliveries	Total deliveries
	at HC	By Health Staff	ByTBAs	at RH	by Health Staff	by health staff and TBAs
Samraong	1330	310	1310	209	1849	3159
<i>Sub-total</i>	<i>1330</i>	<i>310</i>	<i>1310</i>	<i>209</i>	<i>1849</i>	<i>3159</i>

Source: MoH, Annual Statistics 2007

12 Education³

12.1 Schools, Classes, Students, Staff, for all levels, for 2007/2008 by District

District	Number of Schools	Disadv. Schools	Number of Classes	Classes in Pagoda	Enrollment		Repeaters		Teaching Staff		Non-Teaching Staff		Total Staff	
					Total	Girl	Total	Girl	Total	Female	Total	Female	Total	Female
Anlung Veng	30	1	240	0	9,036	4,165	947	419	151	35	25	5	176	40
Banteay Ampil	59	6	345	0	11,417	5,216	1,596	731	229	24	40	1	269	25
Chong Kal	31	1	174	0	6,019	2,956	706	298	124	31	26	5	150	36
Samrong	42	0	314	0	12,155	5,725	1,269	527	229	80	39	7	268	87
Trapaing Prasat	27	4	197	0	6,522	2,966	788	347	127	31	27	2	154	33
Whole Province	189	12	1,270	0	45,149	21,028	5,306	2,322	860	201	157	20	1,017	221
- Urban Area	42	0	314	0	12,155	5,725	1,269	527	229	80	39	7	268	87
- Rural Area	117	11	716	0	23,958	11,138	3,090	1,376	480	86	93	8	573	94
- Remote Area	30	1	240	0	9,036	4,165	947	419	151	35	25	5	176	40

12.2 Characteristics of Schools and School Principals for 2007/2008 by Commune

Commune	Number of Schools				2 - Shift	Floating	Schools	Attached	Schools Without		Characteristics of School Principals (Incharge)			
	Pre-Sch	Primary	College	Lycee	Schools	Schools	in Pagoda	Pre-Sch	Water Sup.	Latrine	Avg. Age	Avg. Service	U.Sec+ Ed.	Female
Bansay Reak	0	5	1	0	2	0	0	0	0	1	32.4	13.2	0	0
Bos Sbov	0	6	1	0	6	0	0	0	1	1	41.1	19.3	0	0
Koun Kriel	0	11	1	0	11	0	0	0	4	4	32.6	10.2	1	2
Samraong	3	8	1	1	9	0	0	3	6	2	45.8	18.5	1	0
Ou Smach	0	3	1	0	4	0	2	0	2	1	46.6	22.8	1	0

³ All the data for section 12 comes from the Ministry of Education, Youth and Sport (MoEYS)

12.3 Enrolment by Level of Education, 2006/2007 by Commune

Commune	School	Pre school		Primary School		Lower Secondary School		Upper Secondary School		Enrolment	
		Total	Female	Total	Female	Total	Female	Total	Female	Total	Female
Bansay Reak	6	0	0	525	252	43	21	0	0	568	273
Bos Sbov	7	0	0	1227	595	85	46	0	0	1312	641
Koun Kriel	12	0	0	2541	1261	191	95	0	0	2732	1356
Samraong	12	118	64	3889	1880	1264	579	725	259	5996	2782
Ou Smach	4	0	0	1044	486	158	62	0	0	1202	548

12.4 Enrolment by Level of Education, 2007/2008 by Commune

Commune	School	Pre school		Primary School		Lower Secondary School		Upper Secondary School		Enrolment	
		Total	Female	Total	Female	Total	Female	Total	Female	Total	Female
Bansay Reak	6	0	0	555	270	73	34	0	0	628	304
Bos Sbov	7	0	0	1135	506	166	76	0	0	1301	582
Koun Kriel	12	0	0	2546	1205	258	142	0	0	2804	1347
Samraong	13	239	122	3930	1912	1097	549	854	300	6120	2883
Ou Smach	4	0	0	1126	537	176	72	0	0	1302	609

12.5 Aspects of Enrolment for 2007/2008 by Commune

Commune	% Repeaters (Total)			% Over-age Enrollment (Total)			% Repeaters (Girl)			% Over-age Enrollment (Girl)		
	Primary	L.Sec.	U.Sec.	Primary	L.Sec.	U.Sec.	Primary	L.Sec.	U.Sec.	Primary	L.Sec.	U.Sec.
Bansay Reak	13.9	0.0	0.0	29.0	63.0	0.0	12.6	0.0	0.0	30.4	67.6	0.0
Bos Sbov	11.6	0.6	0.0	23.0	62.7	0.0	11.5	1.3	0.0	22.3	69.7	0.0
Koun Kriel	12.4	3.5	0.0	35.7	70.5	0.0	10.2	3.5	0.0	34.4	66.9	0.0
Samraong	12.4	8.6	2.1	28.8	60.3	71.9	11.2	5.8	1.0	26.6	51.9	65.0
Ou Smach	12.1	0.0	0.0	25.7	49.4	0.0	10.6	0.0	0.0	24.4	44.4	0.0

12.6 School Buildings for all schools in the District for 2007/2008, by Commune

Commune	Total Number of		Concrete/Brick Structure		Wooden Structure		Bamboo Structure		New Buildings		Buildings Without Good		
	Buildings	Rooms	Buildings	Rooms	Buildings	Rooms	Buildings	Rooms	Repaired	Constructed	Floor	Roof	Wall
Bansay Reak	6	19	3	13	3	6	0	0	0	2	0	1	0
Bos Sbov	8	27	5	22	2	4	1	1	0	1	1	1	2
Koun Kriel	13	51	10	46	3	5	0	0	0	1	1	0	1
Samraong	31	141	23	118	7	22	1	1	1	5	7	4	4
Ou Smach	6	32	6	32	0	0	0	0	0	2	1	0	2

12.7 Conditions of Classrooms and Existence of Separate School Office and Library, by Commune

Commune	Number of Class rooms	Number of Classrooms			Classrooms Without Good			Number of Furniture needed				Schools with Separate	
		in Pagoda	New Repaired	New Constr.	Floor	Roof	Wall	Desks	Chairs	Black-board	Teacher Table	Office	Library
Bansay Reak	15	0	0	7	0	5	0	0	1	2	0	1	0
Bos Sbov	25	0	0	6	1	1	4	46	46	5	4	2	0
Koun Kriel	41	0	0	1	2	0	2	17	38	3	0	3	1
Samraong	95	0	4	21	30	15	12	42	35	8	11	6	4
Ou Smach	21	0	0	12	5	0	10	10	0	0	9	0	0

12.8 Community Participation and Financing across all schools in the District for 2007/2008 by Commune

Commune	Parent Association				Commu. Teachers	Teaching Monks	PAP Fund (Riel)		Number of Schools Obtaining Funds from				
	Exists	Held Meet	Total	Female			per Student	per School	Sch. Income	Community	Gvt. For building	Abroad	IOs/NGOs
Bansay Reak	6	5	4	1	0	0	12,613	1,194,050	0	0	0	0	0
Bos Sbov	7	6	6	0	0	0	9,807	1,838,086	0	0	0	0	0
Koun Kriel	11	11	5	1	0	0	9,558	2,175,967	0	2	0	0	0
Samraong	10	10	6	1	0	0	10,033	7,073,400	1	0	0	0	0
Ou Smach	4	4	6	1	0	0	8,564	3,438,500	0	1	0	0	0

12.9 Percentage Student Flow Rates and Graduation by level 2006/2007, by Commune

Commune	Primary Level (Grades 1-6)			Lower Secondary Level (Grades 7-9)			Upper Secondary Level (Grades 10-12)			Successful Candidates		
	Promotion	Repetition	Dropout	Promotion	Repetition	Dropout	Promotion	Repetition	Dropout	Grade 6	Grade 9	Grade 12
Bansay Reak	76.0	14.7	9.3	76.7	0.0	23.3	0.0	0.0	0.0	40	0	0
Bos Sbov	72.0	10.8	17.2	75.3	1.2	23.5	0.0	0.0	0.0	93	0	0
Koun Kriel	74.3	12.4	13.3	69.1	4.7	26.2	0.0	0.0	0.0	140	0	0
Samraong	77.9	12.5	9.6	68.1	7.4	24.4	70.9	2.5	26.6	349	228	52
Ou Smach	78.3	13.0	8.7	71.5	0.0	28.5	0.0	0.0	0.0	69	19	0

13 Staff and Resources at the District

This chapter presents data from the District Information System, collected around the middle of 2009 unless otherwise specified.

13.1 District Councilors elected in 2009

Name	Sex	Year of Birth	Function	Phone
ស្វាយ ហ៊ី	M	1956	Chairperson of The Council	011-710 476
សុខ ឆាម	M	1950	Councillor	011-619 069
ណាក ឥន្ទណាស់	M	1943	Councillor	011-171 863
និម រើន	F	1953	Councillor	011-630 379
អ៊ឹម អន	M	1945	Councillor	011-800 238
អូន វ៉ាល់	M	1950	Councillor	017-221 864
តោ ប៊ុម	M	1953	Councillor	099-295 611
មាស ភិរុណ	F	1953	Councillor	011-236 188
អ៊ាន លាង	M	1951	Councillor	011-902 679
ឡាច សារី	M	1955	Councillor	011-799 812
ឈុន ប៊ិន	M	1954	Councillor	012-173 3577
កោន សុភិម	M	1954	Councillor	
ពេញ សៀន	M	1950	Councillor	011-570 911
សំ វិរៈ	M	1954	Councillor	011-786 733
អ៊ឹង វ៉េច	M	1970	Councillor	085-581 856

13.2 Committees of the Council

Please note at the time of producing the district data books the composition of the committees was not known for all district councils and therefore data were not available for 13.2.1, 13.2.2, 13.2.3.

13.2.1 Technical Facilitation Committee

13.2.2 Women's and Children's Affairs Committee

13.2.3 Procurement Committee

13.3 Board of Governors

Name	Sex	DoB	Function	Salary Level	Body	Phone
ធី ណុល	M	1954	Municipality governor	ក.២.៦	High Ranking Civil Servant	011-720 040
សម តារាវិទូ	M	1982	Municipality deputy governor	ក.៣.១១	High Ranking Civil Servant	017-829 999
ណាក កាមល	F	1979	Municipality deputy governor	ខ.៣.៧	Medium Civil Servant	011-309 378
តោ ស្មើយ	M	1954	Municipality deputy governor	ខ.៣.៧	Medium Civil Servant	011-786 914
ហ៊ុន ភ័ក្ត្រវាសនា	M	1973	Municipality deputy governor	គ.៣.១៤	Secretary	011-923 337

13.4 Offices under Sala Krong, Sala Srok and Sala Khan

Office Name	Chief		Deputy Chief		No. of Staff				Office Area (m2)	No of vehicle (public or program)	
					State		Contract			vehicle	moto
	M	F	M	F	M	F	M	F			
District/ Khan Cabinet	1	0	1	0	0	0	0	0	Borrow	0	0
Adminnistration Office	0	1	1	0	4	1	0	0	12	0	1
Economy Office	1	0	0	1	2	1	0	0	12	0	0
Social Affair Office	1	0	1	0	2	0	0	0	12	0	0

13.5 Municipality/District/Khan line offices

Office Name	Chief		Deputy Chief		No. of Staff				Office Area (m2)	No of vehicle (public or program)	
	M	F	M	F	State		Contract			vehicle	moto
					M	F	M	F			
District/ Khan Police Headquarter	1	0	4	0	52	3	0	0	63	0	8
District/ Khan Military Police Headquarter	1	0	3	0	10	0	0	0	Borrow	1	0
Planning Office	1	0	1	0	1	0	0	0	0	0	1
Education Office	1	0	1	0	5	1	0	0	108	0	1
Agriculture Office	1	0	0	0	1	0	0	0	Borrow	0	0
Culture Office	0	0	1	0	0	0	0	0	Borrow	0	0
Cult and Religion Office	1	0	0	0	0	0	0	0	Borrow	0	0
Post Office	1	0	0	0	0	0	0	0	40	0	0
Lan Management Office	1	0	2	0	2	0	0	0	187	0	0

13.6 Properties and Equipment of District Administration

13.6.1 Buildings

Description	Unit	Number	Remark
Office building type			
- Concrete	building	1	
- Wood	building	0	
- Mixed	building	0	
Total floor space	m2		
- Concrete	m2	200	
- Wood	m2	0	
- Mixed	m2	0	
Building condition			
- Concrete	%	90	
- Wood	%	0	
- Mixed	%	0	
Office reserved land area	m2	15,000	
Total office land area	m2	15,000	

13.6.2 Means of Transport available at the District Administration

Description	Unit	Number	Remark
Vehicle (type, size and condition)	Vehicle	0	
Motorcycle (type, size and condition)	Motor	5	

13.6.3 Equipment in District Offices

Description	Unit	Number	Remark
Generator	per set	1	
Photocopy machine at the office	per set	0	
Private photocopy machine at the district town	place	10	
Telephone network (mobile line service)	network	4	
Telephone network (land line service)	network	0	
Fax (include Fax number)	per set	1	065393988
Computer	per set	1	
Printer	per set	0	
Scanner	Per set	0	
Number of computers those can access Internet and email services in the municipality/ district/khan office (including the technical line offices (please provide the email address)	set	0	
Typewriters (including the technical line offices)	per set	2	
Staff of Municipality/district/khan office can use computer	person	2	

13.6.4 Equipment and facilities at the District Town

Description	Unit	Number	Remark
Availability of electricity at noon	Nr Hours	12	
Private internet and email services in the municipality/ district/khan town.	place	1	

13.7 Registered Revenue of the District Administration in 2008⁴

Sources of Revenue	Revenue Collecting Agency	Estimated annual revenue (In Riels)
Slaughter Hosue	Provincial Department of Agriculture	2,880,000
Patent	District/ Khan Taxation Unit	1,650,000
Tax imposed on merchants	Department of Economy and Finance	18,000,000

13.8 Services in the District

13.8.1 Public Sector Services

Type of Infrastructure/services	Unit	Number	
		Public	Private
Schools			
Pre-school	room	7	0
Primary School	room	182	0
Secondary school	room	42	0
High School	room	25	0
University	room		
Health			
Health post	place	1	0
Health center	place	4	0
Referral Hospital	bed	40	0

13.9 Civil Society Organizations active in the District

13.9.1 NGOs, Associations, Programs and Projects

Name	Abbr.	Sector Activities	No. of Target Communes	No. of Target Villages	Office in District
NA	BFD	ទ្រទ្រង់កុមារក្រីក្រ	5	0	Yes
NA	KBA	ធនាគារស្រូវ ឥណទាន	5	0	Yes
NA	WB	មូលនិធិឃុំ	5	47	Yes
ZOA	ZOA	អនាម័យទឹកស្អាត	5	0	Yes
NA	NA	៥	47	0	Yes
NA	BTC	អប់រំ	5	0	Yes
Malteser	Malteser	សុខភាព	5	47	Yes
NA	CMAC	ប្រោសអាតម៌	2	8	Yes
UNFPA	UNFPA	សុខភាពបន្តពូជ និងយេនឌ័រ	5	47	Yes
UNICEF	UNICEF	កម្មវិធីសិទ្ធិកុមារ	5	47	Yes

⁴ Please note that the data in this table are at best estimates. If the table appears blank it does not mean there is no revenue, just that the data have not been recorded/entered.

Name	Abbr.	Sector Activities	No. of Target Communes	No. of Target Villages	Office in District
NA	CHHRA	សុខភាពសហគមន៍	5	47	Yes
NA	CIDO	កសិកម្ម សិទ្ធិសុខស្បៀង	1	0	Yes
NA	CDA	អាហារូបត្ថម្ភកុមារ និងសហគមន៍ព្រៃឈើ	3	0	Yes

13.9.2 Political Parties active in the Municipality, District and Khan

Name	Abbr.	Office in District
Cambodian People Party	CPP	Yes
FUNCINPEC Party	FUNCINPEC	Yes
SAM RAINSY Party	Sam Rainsy Party	Yes

13.10 Private Sector Organizations

13.10.1 Registered Companies in 2008, by District

On private sector at commune and/or district level	OMC	Anlong Veng	Banteay Ampil	Chongkal	Samrong	Trapeang Prssath
Businesses and Companies						
Number of registered agricultural enterprises (except family farms)	7	1	0	1	4	1
Number of registered shops, restaurants, transporters and other services	28	14	0	0	14	0
Number of manufacturing companies	35	10	0	0	23	2
Number of registered forestry enterprises	11	2	2	2	3	2
Number of registered mining companies	6	1	1	2	0	2
Number of financial institutions (ACELEDA, Thanakea Phum, AMK)	3	0	0	0	3	0
Number of other commercial institutions	-	n/a	n/a	n/a	n/a	n/a
Estimated number of informal enterprises (not registered)	8	3	n/a	n/a	5	n/a
Employment						
Number of people employed in 2008 by companies or any other enterprises	1,545	100	20	70	1,305	50
Investment						
Amount invested in 2008 by private sector	14,165,714	57,143	0	0	14,095,238	13,333
Markets						
Number of markets, operating at least weekly	7	2	1	1	2	1

Note: These data are not comprehensive as different companies and business are registered with different departments and not all departments were able or willing to provide detailed information. The number of informal enterprises reflects a rough estimate, made at provincial level and could not be verified.

Source: Unofficially collected at Provincial Level

13.10.2 Farmers in 2008, by District

Credit	OMC	Anlong Veng	Banteay Ampil	Chongkal	Samrong	Trapeang Prssath
Volume of credit provided to farmers in 2008	4,000	1,000	1,000	n/a	n/a	2,000
Number of farmers receiving credit in 2008	587	80	205	n/a	n/a	302
Volume of credit provided to companies in 2008	N/A	n/a	n/a	n/a	n/a	n/a

Note: Please note that these data are not necessarily complete or correct. The data are derived from government agencies at provincial and district level which used different recording systems, did not always have complete data or were, sometimes, less than willing to share their data.

Source: Unofficially collected at Provincial Level

SECTION E: POVERTY DATA

14 Data on Poverty

14.1 Predicted Poverty Rates for 2009, by commune

The **Predicted Family Poverty Rate** is based on a statistical model (robust multilevel mixed effect regression) at village level developed by the NCDD M&E Unit and uses CDB data for making an estimate of the predicted poverty rate (this is: *the portion of total families in the district or commune who are expected to be poor*) for the following year using current year data.

The basis for this predicted poverty rate also uses IDPoor (a project of the Ministry of Planning with technical assistance provided by GTZ) data

Commune	2004	2009
Bansay Reak	51.80%	50.30%
Bos Sbov	50.80%	42.20%
Koun Kriel	48.20%	44.80%
Samraong	46.10%	35.20%
Ou Smach	38.10%	17%

14.2 Poverty data from survey

14.2.1 Identification of Poor Households Program (IDPoor)

The Ministry of Planning IDPoor Program has developed standardized Procedures for Identification of Poor Households in rural areas. These Procedures are implemented using a participatory and consultative process by sub-national government structures and community representatives.

The IDPoor Program is managed by the Ministry of Planning (MOP), in cooperation with the Ministry of Interior's Department of Local Administration (DOLA). The program is supported by the Federal Republic of Germany, with technical assistance provided by German Technical Cooperation (GTZ). In 2009, AusAID also provided funding support to the Program.

Objective

The IDPoor Program aims to implement the Procedures for Identification of Poor Households in rural areas as widely as possible, in order to provide data on the level of poverty of areas and households that can be used by a large range of institutions and organizations for targeting services and development assistance to poor areas and poor households.

Coverage: During 2007, 2008 and 2009 the IDPoor Procedures have been implemented in 18 provinces (with partial or complete coverage), covering a total of around 7000 rural villages. The MOP and a number of NGO partners who are Health Equity Fund Operators have collaborated in collecting this data from different areas.

Categorization: Identified poor households are classified under two poverty categories: Poor Level 1 (very poor), and Poor Level 2 (poor). Households are classified based on data collected using a standard questionnaire, together with consideration by villagers of these households' special circumstances.

Further information: Please go to the IDPoor Program webpage at www.mop.gov.kh/Projects/IDPoor/tabid/154/Default.aspx

Commune	Poor 1 HHs	Poor 2 HHs	Poor 1 HHs	Poor 2 HHs	Total Poor 1&2 HHs	Total HHs in Commune
Bansay Reak	171	269	15.5%	24.4%	39.9%	1102
Bos Sbov	140	157	14.3%	16.0%	30.2%	982
Koun Kriel	554	503	15.5%	14.1%	29.6%	3576
Samraong	453	469	14.7%	15.3%	30.0%	3072
Ou Smach	274	104	17.6%	6.7%	24.2%	1561